

# BENOIT SYSTEMES

*Autonomy is power*



## LIGHT RANGE 2.1

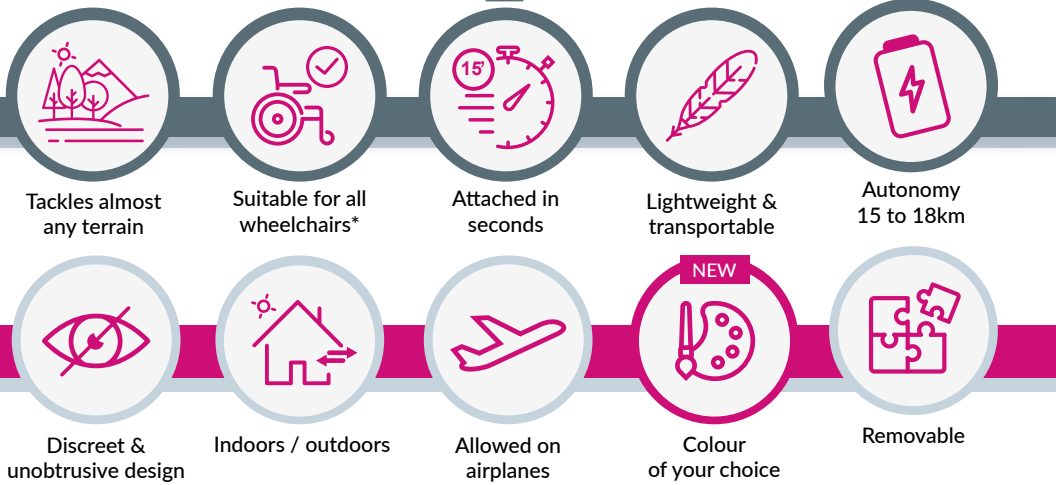
[WWW.BENOITSYSTEMES.COM](http://WWW.BENOITSYSTEMES.COM)



# POWER

Using the inherent strengths of manual wheelchairs, our power add-ons give people the freedom to tackle many terrains, remove the logistical problems and turn the journeys into more about the destination than the challenge of getting there.

## THE FEATURES OF OUR POWER ADD-ONS



\*See compatibility guide.

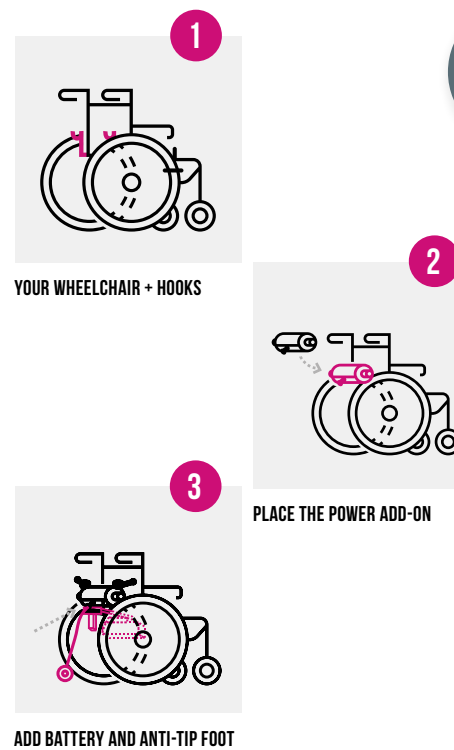
“ Robust and proven technology with strong backup. ”

BENOIT SYSTEMES, since 1994

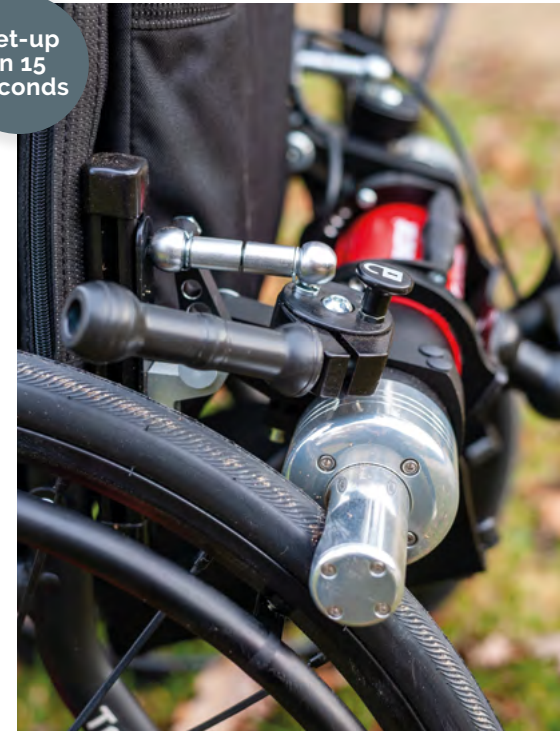


# HOW DOES IT WORK ?

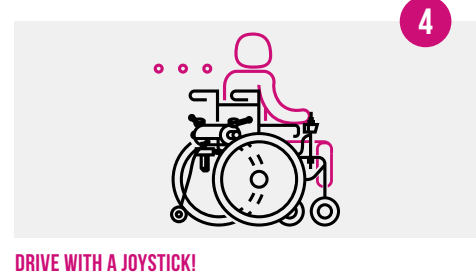
You will be surprised by the lightness and simplicity of use of our power add-ons. They will not change either the overall dimensions of the chair, the folding ability nor the center of balance.



Set-up in 15 seconds



— LIGHT DRIVE 2.1 —  
LIGHT DRIVE TURNS YOUR MANUAL WHEELCHAIR INTO AN ULTRA-LIGHT POWERCHAIR IN SECONDS.



— LIGHT ASSIST 2.1 —  
ATTENDANT CONTROLLED LIGHT ASSIST TAKES ALL THE EFFORT OUT OF PUSHING THE WHEELCHAIR.







## THE LIGHT DRIVE 2.1



**USER**  
operated

Turn your manual wheelchair into an ultra-light power chair in seconds

Transports easily in any vehicle

Free wheel when you need

Independence to go where you want



## THE LIGHT ASSIST 2.1



**COMPANION**  
operated

Effortless pushing of the wheelchair for the attendant

Efficient and safe maneuvers

Speed control and braking aid

Journeys together become easier

### WHEELCHAIR POWER ASSISTANCE MADE EASY



NEW IN 2021

New anti-tip



NEW IN 2021

More ergonomic clutch system



NEW IN 2021

Extended colour range



NEW IN 2021

New joystick extension

### A POWERFUL & COMPACT ATTENDANT CONTROLLED POWER ADD-ON



NEW IN 2021

New storage for the handles



NEW IN 2021

More ergonomic handle locking system



NEW IN 2021

Extended colour range



NEW IN 2021

New anti-tip



NEW IN 2021

More ergonomic clutch system



# LIGHT DRIVE 2.1 Mini

## A SMALLER VERSION FOR CHILDREN



**LIGHT DRIVE 2.1 Mini** is instinctive, simple and easy to drive.

It encourages children's independence helping with the social development.

**LIGHT DRIVE 2.1 Mini** can be refitted as the child grows allowing to change chair without changing power add-on.

# HEAVY DUTY VERSION FOR USERS ABOVE 120 KG

## LIGHT DRIVE 2.1 Plus

The extra-solid **LIGHT DRIVE 2.1 Plus** supports user's weight up to 240 kg.

Rugged and robust it enables users to enjoy the advantages of four powerful motors while keeping the lightness and mobility of a manual wheelchair.

Autonomy of at least 20 km is provided by a 18 Ah battery.



# TECHNICAL DETAILS

Our power add-ons can be fitted on almost any wheelchair starting with 32 cm seat width and 40 cm between the wheels.

	Maximum user weight	Power add-on weight
<b>LIGHT DRIVE 2.1</b>	120 kg (265 lbs)	8,8 kg (19,4 lbs)
<b>LIGHT ASSIST 2.1</b>	120 kg (265 lbs)	8,1 kg (17,8 lbs)
<b>LIGHT DRIVE 2.1 Mini</b>	120 kg (265 lbs)	8,8 kg (19,4 lbs)
<b>LIGHT DRIVE 2.1 Plus</b>	240 kg (529 lbs)	16 kg (35,2 lbs)

- Max speed** ————— 10 km/h programmable
- Motor** ————— 2 x 130 W motors with brakes
- Motor LIGHT DRIVE 2.1 Plus** ————— 4 x 130 W motors with brakes
- Climbing ability** ————— 20 % gradient based on 70 kg person
- Manufacturer's warranty** ————— 24 months for the power add-on and the battery



12AH LITHIUM BATTERY IS COMPATIBLE WITH APPLICABLE IATA REGULATIONS FOR AIR TRAVEL

Model	Weight	Range*
— Lithium Battery	— 3,85 kg (8,5 lbs)	— 15 to 18 km (9,3 to 11,2 m)

\*Range depends on terrain and weight of the user



## NEW IN 2021 Extended choice of colours (central tube)

- | CLASSICALS | METALLICS        | TRENDS     |
|------------|------------------|------------|
| ● BLACK    | ● NIGHT BLUE     | ● SKY BLUE |
| ● WHITE    | ● GREY           | ● PINK     |
| ● BLUE     | ● SILVER         | ● GREEN    |
| ● RED      | ● COPPER         | ● YELLOW   |
| ● KHAKI    | ● CHAMPAGNE GOLD | ● ORANGE   |

For more information visit our website [www.benoitsystemes.com](http://www.benoitsystemes.com)

# DISTRIBUTORS

## ARGENTINA

Outlandish  
www.outlandish.com.ar

## AUSTRALIA

Mobility Care  
www.mobilitycare.net.au

## BELGIUM

Mobility By Olivier  
www.mobilitybyolivier.be

## CANADA

49 Bespoke  
www.49bespoke.com

## CYPRUS

Medicom Services  
www.medicomstore.com

## DENMARK

Sunrise Medical  
www.sunrisemedical.dk

## FINLAND

Movetta  
www.movetta.fi

## IRELAND

MMS Medical  
www.mmsmedical.ie

## ITALY

Progettiamo Autonomia  
www.my-pa.it

## LUXEMBOURG

Megamed  
www.megamed.lu

## NETHERLANDS

Mobility & You  
www.mobility-you.nl

## PORTUGAL

Rehappoint  
www.rehappoint.pt

## SINGAPORE

Teng Chiang Holdings  
www.tchold.com

## SOUTH AFRICA

Sitwell  
www.sitwell.co.za

## SPAIN

Eo Prim  
https://www.prim  
clincasortopedicas.es/

## SWITZERLAND

Degonda Rehab  
www.turbo-twist.ch

## SWITZERLAND

Gloor Rehabilitation  
www.gloorrehab.com

## UNITED ARAB

EMIRATES  
Gulf Drug LLC  
www.gulfdrug.com

## UNITED KINGDOM

Recare  
www.recare.co.uk



WWW.BENOITSYSTEMES.COM



Follow us!

7 Rue du Pont,  
21450 Billy Les Chanceaux FRANCE

(+33) 3 80 96 51 25

export@benoitssystemes.com



LIGHT RANGE 2.1 is compliant with EU  
Regulation 2017/745 on medical devices.  
These products are Class I medical devices.

## YOUR LOCAL DEALER