



Phone (800) 981-1540 | Fax (715) 254-0996  
 sales@kimobility.com | www.kimobility.com



Company:

Ship To:

Account Number:

Date:

Address:

Quote: PO Number:

City:

State:

ATP:

Zip:

Phone:

Marked For:

Email/Fax:

Associated Quote/Order#:

**Submit Form**

Effective: 6/17/2024

Catalyst 5Vx - Transit not Included [5VOPTTRN] \_\_\_\_\_ £1650  
 300lb weight capacity

## Frame

### Seat Width

14" [5VSWT014]	N/C
15" [5VSWT015]	N/C
16" [5VSWT016]	N/C
17" [5VSWT017]	N/C
18" [5VSWT018]	N/C
19" [5VSWT019]	N/C
20" [5VSWT020]	N/C
21" [5VSWT021]	N/C
22" [5VSWT022]	N/C

### Transit Option

Transit System (Weight Limit 300lbs) [5VTRNOPT]	N/C
<i>Not available with 350 lb Weight Capacity</i>	
Omit [5VTRNOP2]	N/C

### Cross Brace

Standard Cross Braces [5VXBR001]	N/C
Seating System Cross Braces [5VXBR003]	£182
<i>Allows for easy attachment of seating system mounting hardware. Not available with Seat Sling.</i>	

### Seat Depth

14" [5VSDE014]	N/C
15" [5VSDE015]	N/C
16" [5VSDE016]	N/C
17" [5VSDE017]	N/C
18" [5VSDE018]	N/C
19" [5VSDE019]	N/C
20" [5VSDE020]	N/C

### Seat Option

Removable Aluminum Seat Pan [5VACC004]	£236
<i>Pan depth 1/2" shorter than Seat Depth</i>	

### Weight Capacity

300 lbs [5VSTD001]	£300
350 lbs (Heavy Duty) [5VHVD001]	£483
<i>Requires minimum 6" caster height</i>	

## Backrest

### Back Post / Height Range / Back Height

Select Back Height in row corresponding to desired Back Post and Height Range

Back Post	Price	Height Range	Back Height			
Standard [5VBOP002]	N/C	Short	8.5"	9.5"	10.5"	11.5"
		Medium	12.5"	13.5"	14.5"	15.5"
		Tall	16.5"	17.5"	18.5"	19.5"
Angle Adjustable w/Push Handle [5VBOP004]	N/C	Short	14"	15"	16"	
		Medium	16"	17"	18"	
		Tall	18"	19"	20"	
Half Folding [5VBOP029] <sup>1,2</sup>	£86	Short	12.5" <sup>3</sup>	13.5"	14.5"	15.5"
		Tall	16.5"	17.5"	18.5"	19.5"

<sup>1</sup> Not available with Transit Option, Heavy Duty Option, Standard Back Upholstery, Flip Back Armrest or Straight with Fold Down Push Handle

<sup>2</sup> Available only with Straight with Push Handle or Straight without Push Handle

<sup>3</sup> Not available with 8° Bend with Push Handle Back Post

### Standard Back Post

Select option below only if a Standard Back Post option is selected on chart to the left

Straight with Push Handle [5VBCK004]	N/C
Straight without Push Handle [5VBCK008]	N/C
8 Degree Bend with Push Handle [5VBOP003]	£37
<i>Not available with Short Back Height Range</i>	
Straight with Fold Down Push Handle [5VBCK006]	£158
<i>Not available with 350 lb Weight Capacity</i>	
Caregiver Adjustable Height [5VBOP034]	£196
<i>Not available with Swing Away Armrests</i>	

### Push Handle Options

*Not available with Straight Back Post with Fold Down Push Handle or 350 lb Weight Capacity*  
Low Profile Push Handle [5VBCK007] £67  
*2" shorter than standard push handles*

### Back Upholstery

*If selecting both upholstery and Axiom Back, the upholstery will be installed.*

Standard [5VBUP001]	N/C
<i>Not available with Short or Medium Back Height Ranges on 21" - 22" Seat Widths</i>	
Tension Adjustable with Standard Cover [5VBUP002]	N/C
Tension Adjustable with Air Mesh Breathable Cover [5VBUP007]	£182
Omit [5VBUP003]	N/C

## Footrest / Frame Type

### Frame Type

Swing Away [5VFRM001]	N/C
Super Low - Swing Away [5VFRM002]	N/C
70° Fixed Front [5VFRM003]	N/C
80° Fixed Front [5VFRM004]	N/C

### Footrest Hanger Type

Frame	Hanger	60°	70°	80°	90°	Retail
Swing Away	Extension Tube Mount	[5VHAN001]	[5VHAN002]	[5VHAN003] <sup>1</sup>		N/C
	Front Mount		[5VHAN016]	[5VHAN017] <sup>1</sup>	[5VHAN004] <sup>1</sup>	N/C
	Pro ELR <sup>2</sup>					[5VHAN044] £483
	Omit Hangers					[5VHAN046] N/C
Fixed	Extension Tube Mount		[5VFRM003]	[5VFRM004] <sup>1</sup>		N/C

<sup>1</sup> Not available with 7" or 8" casters

<sup>2</sup> Available only with Classic Hanger Release. Not available in combination with 24" wheels and Push to Lock Flush Mount Wheel Locks.

### Seat to Footrest Length

Select Extension and Seat to Footrest Length in row corresponding to desired Footrest. Footrest Length of at least 2.5" shorter than Front Seat Height recommended. Extension Tube Hangers and Fixed Front Frame measurements are based on 70° Hanger / Front Frame Bend.

Footrest	Extension	Seat to Footrest Length											
		11"	11.5"	12"	12.5"	13"	13.5"	14"	14.5"	15"	Requires 3" Extension		
Extension Tube Hangers (60°, 70°, 80°)	Short (11" - 15")	11"	11.5"	12"	12.5"	13"	13.5"	14"	14.5"	15"			
	Medium (13" - 17")	13"	13.5"	14"	14.5"	15"	15.5"	16"	16.5"	17"			
	Long (15.5" - 19.5")	15.5"	16"	16.5"	17"	17.5"	18"	18.5"	19"	19.5"			
Front Mount Hangers <sup>1</sup>	Short Front Mount Hanger (70°, 80°, 90°)	Standard Selections									10"	10.5"	11"
		4" <sup>2</sup>	4.5" <sup>2</sup>	5"	5.5"	6"	6.5"				11.5"	12"	12.5"
	Medium Front Mount Hanger (70°, 80°, 90°)	4" <sup>2</sup>	4.5" <sup>2</sup>	5"	5.5"	6"	6.5"	7"	7.5"		12"	12.5"	13"
		8"	8.5"	9"	9.5"	10"	10.5"	11"	11.5"		13.5"	14"	14.5"
	Long Front Mount Hanger (70°, 80°)	5"	5.5"	6"	6.5"	7"	7.5"	8"	8.5"	9"	14"	14.5"	15"
		9.5"	10"	10.5"	11"	11.5"	12"	12.5"	13"	13.5"	15.5"	16"	16.5"
	PRO ELR Low Pivot Setting	Pro ELR Low Pivot Setting Short (12" - 17.5")	12" - 17.5"										
		Pro ELR Low Pivot Setting Long (15" - 21")	15" - 21"										
PRO ELR High Pivot Setting	Pro ELR High Pivot Setting Short (10.5" - 15.5")	10.5" - 15.5"											
	Pro ELR High Pivot Setting Long (13" - 19")	13" - 19"											
Fixed Front Frame (70°, 80°)	Short (11.5" - 15")	11.5"	12"	12.5"	13"	13.5"	14"	14.5"	15"				
	Medium (13" - 17")	13"	13.5"	14"	14.5"	15"	15.5"	16"	16.5"	17"			
	Long (15.5" - 19.5")	15.5"	16"	16.5"	17"	17.5"	18"	18.5"	19"	19.5"			

<sup>1</sup> See Minimum Front Seat Height chart above

<sup>2</sup> Available with 90° front mount hangers

### 3" Extension

Available only with Front Mount Hangers

3" Extension [5VEXT008]	£49
3" Extension (Provided as Parts) [5VEXT018]	£49

### Footplates

Composite [5VFPL001]	N/C
<i>Not available with Front Mount Hanger</i>	
Composite Angle Adjustable [5VFPL014]	N/C
<i>Not available with Front Mount Hanger or 14" Seat Width</i>	
Aluminum Angle Adjustable [5VFPL002]	£170
One Piece Flip Up Angle Adjustable [5VFPL009]	£272
<i>Not available with Front Mount Hanger or PRO ELR</i>	

### Hanger Release

If no selection is made Classic Hanger Release will be used

Classic [5VREL001]	N/C
4-Way - In-Line [5VREL002]	N/C
4-Way - Out [5VREL003]	N/C

Minimum Front Seat Height with Front Mount Hangers						
Hanger Length	Short		Medium		Long	
	70°	80/90°	70°	80/90°	70°	80°
Minimum Front Seat Height with Standard Selection	13.5"	13.5"	14"	15"	16"	17"
Minimum Front Seat Height with 3" Extension	14.5"	16"	16.5"	18"	18.5"	20"

### Heel Loops

Not available with One Piece Flip Up Angle Adjustable Footplate

Heel Loops [5VACC008]	N/C
Adjustable Heel Loops [5VACC029]	£49
Omit Heel Loops [5VACC011]	N/C

### Calf Straps

Velcro Adjustable [5VACC002]	N/C
Padded Velcro Adjustable [5VACC003]	£67
Padded Airmesh Calf Strap [5VACC010]	£103

### PRO ELR Cover

Available only on PRO ELR

Pro ELR Gel Pad Covers (Pair) [5VELRPAD]	£304
--	------

### Residual Limb Support

	Limb Support	Price	Omit	Cover		Pad Size					
				Smooth	Air Mesh	5 x 8	7 x 10	9 x 10	9 x 14	11 x 10	11 x 14
Left	Left Limb Support	£170	Omit Left Hanger [50RLS004]	Smooth [5VRLS006]	Air Mesh [5VRLS007]	5 x 8 [5VRLS008]	7 x 10 [5VRLS009]	9 x 10 [5VRLS010]	9 x 14 [5VRLS011]	11 x 10 [5VRLS012]	11 x 14 [5VRLS013]
Right	Right Limb Support	£170	Omit Right Hanger [5VRLS005]	Smooth [5VRLS020]	Air Mesh [5VRLS021]	5 x 8 [5VRLS014]	7 x 10 [5VRLS015]	9 x 10 [5VRLS016]	9 x 14 [5VRLS017]	11 x 10 [5VRLS018]	11 x 14 [5VRLS019]

## Front Seat Height and Casters

### Front Seat Height

Select Front Seat Height in row corresponding to desired caster size.

Note: Selections in first three Front Seat Height columns use Super Low Front Frame. Super Low Front Frame not available with Fixed Front Frame.

Caster Size	Front Seat Height													
	Uses Super Low Front Frame													
4"	13.5"	14"	14.5"	15"	15.5"	16"	16.5"	17"	17.5"	18"	18.5"	19"	19.5"	20"
5"	14.5"	15"	15.5"	16"	16.5"	17"	17.5"	18"	18.5"	19"	19.5"	20"	20.5"	
6"	15.5"	16"	16.5"	17"	17.5"	18"	18.5"	19"	19.5"	20"	20.5"	21"		
7"	17"	17.5"		18"	18.5"	19"	19.5"	20"	20.5"	21"				
8"	17.5"	18"	18.5"	19"	19.5"	20"	20.5"	21"						

## Casters

		Caster Size					
		Price	4"	5"	6"	7"	8"
Caster Type	.75" Rollerblade	N/C	[5VCAS004]				
	.75" Lighted Rollerblade	£81	[5VCAS005]				
	1" Poly	N/C	[5VCAS006]	[5VCAS010]	[5VCAS014]	[5VCAS019]	[5VCAS020]
	1" Poly Aluminum	£96	[5VCAS007]	[5VCAS011]			
	1" Pneumatic	£103			[5VCAS017]		[5VCAS021]
	1.5" Poly	N/C	[5VCAS032]	[5VCAS025]	[5VCAS026]		
	1.5" Soft Roll Aluminum	£96	[5VCAS009]	[5VCAS013]	[5VCAS016]		
	2" Poly	£79			[5VCAS024]		
	2" Pneumatic w/Foam Insert	£242					[5VCAS023]

## Forks / Stems

Best Fit [5VCST006]	N/C
<i>Ki Mobility will pick Fork and Stem combination to optimize performance based on Caster Size and Front Seat Height</i>	
Standard Fork Stem [5VCST001]	N/C
3/4" Longer Fork Stem [5VCST002]	N/C
1 1/2" Longer Fork Stem [5VCST003]	N/C
Frog Legs Suspension Fork [5VCST013]	£344
<i>Available only with 4", 5" or 6" Caster Sizes. Not available with Caster Pin Locks, 350 lb Weight Capacity, 2" Poly caster or 2" Pneumatic w/ Foam Insert caster.</i>	
Frog Legs II Suspension System [5VCST014]	£424
<i>Lightweight shock absorbing fork. Available only with 4", 5" or 6" Caster Sizes. Not available with Caster Pin Locks, 350 lb Weight Capacity, 2" Poly caster or 2" Pneumatic w/ Foam Insert caster.</i>	

## Fork / Stem Options

### Frog Legs Option

User Weight Under 80 lbs [5VCST004]	N/C
User Weight 80-120 lbs [5VCST008]	N/C
User Weight 120-160 lbs [5VCST009]	N/C
User Weight 160-220 lbs [5VCST010]	N/C
User Weight 220-260 lbs [5VCST011]	N/C
User Weight 260-300 lbs [5VCST012]	N/C

### Caster Pin Locks

Caster Pin Locks [5VCST005]	£194
<i>Not available with Performance Caster Housing, 1 1/2" Longer Fork Stem or Frog Legs Fork</i>	

## Caster Housing

Standard Housing [5VCSH001]	N/C
Performance Housing [5VCSH002]	£37
<i>Not available with 350 lb Weight Capacity</i>	

### Maximum Seat Dump Reference

(Front Seat Height minus Rear Seat Height)

Seat Depth	14"	15"	16"	17"	18"	19"	20"
Maximum Dump Standard Caster Housing	1.5"	2"	2"	2"	2.5"	2.5"	2.5"
Maximum Dump Performance Caster Housing	3"	3"	3"	3.5"	3.5"	4"	4"

*Depending on configuration, chairs with Fixed Front Frame Type may achieve up to an additional .75"*

## Wheel Locks

### Wheel locks

Push to Lock [5VWLK002]	N/C	Hemi Wheel Lock - Left (K0108) [5VWLK023]	£67
Push to Lock Flush Mount [5VWLK001]	£67	<i>Includes Extension Handle</i>	
Pull to Lock [5VWLK003]	N/C	Hemi Wheel Lock - Right (K0108) [5VWLK024]	£67
Low Profile Scissor Lock [5VWLK012]	£67	<i>Includes Extension Handle</i>	
Drum Brake [5VWLK015]	£532	Omit [5VWLK007]	N/C
<i>Available only with 20", 22" and 24" MAXX Spoke wheels. Not available with Reclining Backrest, Straight without Push Handle or Straight with Fold Down Push Handle Back Posts, or Low Profile Push Handle. Axle is Quick Release.</i>			
Dual - Drum Brake with Push to Lock [5VWLK016]	£653	<b>Wheel Lock Options</b>	
<i>Available only with 20", 22" and 24" MAXX Spoke wheels. Not available with Reclining Backrest, Straight without Push Handle or Straight with Fold Down Push Handle Back Posts, or Low Profile Push Handle. Axle is Quick Release.</i>			
Dual - Drum Brake with Pull to Lock [5VWLK017]	£653	Extension Handles [5VWLK004]	£49
<i>Available only with 20", 22" and 24" MAXX Spoke wheels. Not available with Reclining Backrest, Straight without Push Handle or Straight with Fold Down Push Handle Back Posts, or Low Profile Push Handle. Axle is Quick Release.</i>			
		Grade Aids [5VWLK009]	£145
		<i>Available only with Push to Lock Wheel Locks and Pneumatic or Pneumatic with Airless Insert tires</i>	

## Rear Seat Height and Wheels

### Rear Seat Height

Select Rear Seat Height in row corresponding to desired Wheel Size and Tire Profile. 14" Seat Depth not available with 24", 25" or 26" wheel sizes.

Wheel Size	Tire Profile	Rear Seat Height					
20"	Low	11.5"	12.5"	13.5"	14.5"	15.5"	16.5"
	Full	12"	13"	14"	15"	16"	17"
22"	Low	12.5"	13.5"	14.5"	15.5"	16.5"	17.5"
	Full	13"	14"	15"	16"	17"	18"
24"	Low	13.5"	14.5"	15.5"	16.5"	17.5"	18.5"
	Full	14"	15"	16"	17"	18"	19"
25"	Low	14"	15"	16"	17"	18"	19"
26"	Low	14.5"	15.5"	16.5"	17.5"	18.5"	19.5"
	Full	15"	16"	17"	18"	19"	20"

### Wheels

		Rear Wheel Size					
		Price	20"	22"	24"	25"	26"
Rear Wheel Type	Spoke	N/C		[5VWHE022]	[5VWHE024]		
	Mag	£182	[5VWH1220]	[5VWH1222]	[5VWH1224]		
	Maxx Spoke	N/C			[5VWH1124]		
	Maxx Spoke	N/C	[5VWH1120]	[5VWH1122]		[5VWH1125]	[5VWH1126]
	Superlight Spoke <sup>1</sup>	N/C			[5VWHE224]	[5VWHE225] <sup>2</sup>	
	Spinergy Spox	£768		[5VWHE422]	[5VWHE424]	[5VWHE425]	[5VWHE426]

<sup>1</sup> Not available with 350 lb Weight Capacity

<sup>2</sup> Available only with Superlight and Plastic Coated Handrims

### Spinergy Options

Select spoke color

- Black Spokes [5VSSC001] \_\_\_\_\_ N/C
- Red Spokes [5VSSC002] \_\_\_\_\_ Blue Spokes [5VSSC005] \_\_\_\_\_
- White Spokes [5VSSC003] \_\_\_\_\_ £91

### Rear Tire Type

#### Full Profile

- Street Pneumatic 1 3/8" [5VTIR001] \_\_\_\_\_ N/C  
*Not available on 25" wheel size*
- Full Poly 1 3/8" [5VTIR002] \_\_\_\_\_ N/C  
*Not available on Superlight wheel or 25" or 26" wheel sizes*
- Pneumatic with Airless Insert 1 3/8" [5VTIR004] \_\_\_\_\_ £110  
*Not available on Superlight wheel or 25" or 26" wheel sizes*
- Schwalbe HS-127 1 3/8" [5VTIR017] \_\_\_\_\_ £110  
*Available only on 24" wheel size. Not available on Mag wheel.*

#### Low Profile

- Low Poly 1" [5VTIR003] \_\_\_\_\_ £110  
*Not available on Superlight wheel, 25" or 26" wheel sizes or 350 lb Weight Cap*
- Sentinel Solid Tire 1" [5VTIR005] \_\_\_\_\_ £110  
*Not available on Superlight wheel*
- High Pressure 1" [5VTIR006] \_\_\_\_\_ N/C  
*Not available on Mag wheel*
- Schwalbe Marathon Plus Evolution 1" [5VTIR010] \_\_\_\_\_ £110  
*Not available on Mag wheel, 20" or 22" wheel sizes*
- Shox Solid Tire 1" [5VTIR019] \_\_\_\_\_ £110

### Handrims

#### Standard Handrims

- Aluminum Anodized [5VHRM001] \_\_\_\_\_ N/C
- Superlight Aluminum Anodized [5VHRM010] \_\_\_\_\_ N/C  
*Available only on 24" and 25" wheel sizes. Available only on MAXX Spoke or Superlight wheels.*
- Plastic Coated [5VHRM002] \_\_\_\_\_ £110
- Projection (8 Vertical Projections) [5VHRM003] \_\_\_\_\_ £285  
*Available only with full profile tires in combination with 22", 24", and 26" MAXX Spoke wheels, or 22" and 24" Mag wheels*
- Omit Handrim [5VHRM012] \_\_\_\_\_ N/C

#### Ergonomic Handrims

*Not available with 20" or 26" wheels*

- Lite Regular Grip [5VHRM005] \_\_\_\_\_ £272
- Standard Regular Grip [5VHRM008] \_\_\_\_\_ £272
- Lite Extra Grip [5VHRM006] \_\_\_\_\_ £272
- Standard Extra Grip [5VHRM009] \_\_\_\_\_ £272
- Lite Omit Grip [5VHRM004] \_\_\_\_\_ £272
- Standard Omit Grip [5VHRM007] \_\_\_\_\_ £272

### Handrim Options

#### Handrim Mount

- Close Mount [5VTAB001] \_\_\_\_\_ N/C  
*Chair will come with Standard Mount unless Close Mount is selected. Reduces overall width by .75".*

#### Micro-Grip

- 3M Micro Grip [5VACC006] \_\_\_\_\_ £91

## Axles

### Axles

*No selection needed with Drum Brake*

Quick Release [5VAXO003]	N/C
Quad Quick Release [5VAXO001]	£127
<i>Not available with Mag or Spinergy wheels</i>	

### Center of Gravity Preset

*If no selection is made position 3 will be used*

Position 1 [5VCOG004]	Position 2 [5VCOG005]	
Position 3 [5VCOG006]	Position 4 [5VCOG007]	N/C

### Rear Wheel Camber

*Combination of Standard and Adjustable Camber cannot exceed 4°. Selection will default to max of 4° combined if exceeded.*

#### Standard Camber

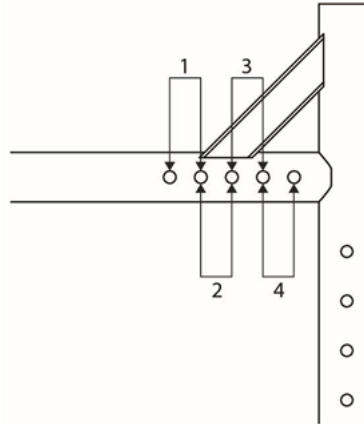
*Chair will be set up with this camber selection*

0° - Standard Camber [5VWC00]	1° - Standard Camber [5VWC10]	
2° - Standard Camber [5VWC02]	3° - Standard Camber [5VWC11]	
4° - Standard Camber [5VWC04]		N/C

#### Adjustable Camber

*Extra camber spacers mounted to the inside of the rear frame for later use*

0° - Adjustable Camber [5VWC16]	1° - Adjustable Camber [5VWC12]	
2° - Adjustable Camber [5VWC13]	3° - Adjustable Camber [5VWC14]	
4° - Adjustable Camber [5VWC15]		N/C



## Armrests

Armrest Type	Length		Price
	Desk	Full	
Height Adjustable T-Arm Tall (11.5"-15")	Desk [5VARM039]	Full [5VARM040]	£212
	Desk [5VARM003]	Full [5VARM004]	
Height Adjustable T-Arm Low (6.5"-10.5") <sup>1</sup>	Desk [5VARM022]	Full [5VARM023]	£212
	Desk [5VARM041]	Full [5VARM042]	
Height Adjustable Flip Back T-Arm Tall (11.5"-15")	Desk [5VARM029]	Full [5VARM030]	£224

<sup>1</sup> Available only with Spinergy, Mag and MAXX Spoke Wheels. If requested configuration is unavailable, Standard Height T-Arm will be used.

<sup>2</sup> Not available with Seat Depths less than 16" or Angle Adjustable Back Posts

<sup>3</sup> Not available with Angle Adjustable Back Posts, Arm Pads, or Half-Folding Back

<sup>4</sup> Not available with 24" wheels and 15" or less Rear Seat Height. Not available with 22" Wheels and 14" or less Rear Seat Height.

Armrest Type	Length		Price
	Desk	Full	
Flip back (10.5") <sup>2,4</sup>	Desk [5VARM009]	Full [5VARM008]	N/C
		[5VARM002]	
Swing Away with Side Guard (10.5" - 12.5") <sup>3</sup>		[5VARM018]	£248
Omit Armrests		[5VARM007]	N/C

### Arm Pads

*Not available with Swing Away Armrests*

Waterfall Arm Pad [5VARM020]	£25
<i>Available only with Height Adjustable T-Arm Tall, Height Adjustable T-Arm, and Height Adjustable T-Arm Low</i>	

## Accessories

### Removable Side Guard

*Not available with T-Arms, Flip Back or Swing Away with Side Guard Armrests*

Composite Side Guards [5VSDG002]	N/C
Aluminum Straight - Black Matte [5VSDG024]	£212
Aluminum Straight - Match Frame Color [5VSDG025]	£272
<i>Not available with Hydrographics</i>	
Fixed Mount Fender Side Guards - Aluminum [5VSDG012]	£303
<i>Not available with 24" wheel size in combination with 14" Rear Seat Height. Not available with standard back post in 8.5", 12.5", or 16.5" back heights.</i>	
Fixed Mount Fender Side Guards - Carbon Fiber [5VSDG011]	£393
<i>Not available with 24" wheel size in combination with 14" Rear Seat Height. Not available with standard back post in 8.5", 12.5", or 16.5" back heights.</i>	
Aluminum Adjustable Fender w/Foam Pad - Black Matte [5VSDG014]	£303
Aluminum Adjustable Fender w/Foam Pad - Match Frame Color [5VSDG015]	£303
<i>Not available with Hydrographics</i>	
Carbon Fiber Adjustable Fender [5VSDG013]	£393

### Anti-Tip

Rear Anti-Tips [5VATP001]	£91
Swing-In Anti-Tip Single - Left [5VATP007]	£105
<i>Not available with 350 lb Weight Capacity. Not available with left side O2 Holder.</i>	
Swing-In Anti-Tip Single - Right [5VATP008]	£105
<i>Not available with 350 lb Weight Capacity. Not available with right side O2 Holder.</i>	
Swing-In Anti-Tip Pair [5VATP009]	£213
<i>Not available with 350 lb Weight Capacity. Not available with O2 Holder.</i>	
Omit [5VATP000]	N/C

### Pelvic Positioning Belt

1 1/2" Auto Buckle Pelvic Positioning Belt [5VPOB001]	£68
1 1/2" Padded Auto Buckle Pelvic Positioning Belt [5VPOB002]	£151
2" Airline Buckle Pelvic Positioning Belt [5VPOB003]	£110
Small Flex-Mount Positioning Belt (16-24") [5VPOB007]	£188
Medium Flex-Mount Positioning Belt (19-29") [5VPOB008]	£188
Large Flex-Mount Positioning Belt (25-37") [5VPOB009]	£188
Belt Mounting Band Clamp [5VACC054]	£103
Pediatric Ki Mobility Backpack [5VACC026]	£73
Ki Mobility Backpack [5VACC009]	£73

### Other Accessories

Tool Kit [5VACC005]	N/C
Removable Underseat Pouch [5VACC015]	N/C
Luggage Carrier [5VACC025]	£73
<i>Not available with PRO ELR or Residual Limb Support</i>	
Black Neoprene Impact Guards [5VIMG001]	£86
Cane and Crutch Holder [5VACC007]	£91
IV Pole [5VACC022]	£260
<i>Available only with Standard Straight Back Posts</i>	
Tipping Lever - Left Side [5VACC034]	£34
<i>Not available with Transit Wheels or 350 lb Weight Capacity</i>	
Tipping Lever - Right Side [5VACC036]	£34
<i>Not available with Transit Wheels or 350 lb Weight Capacity</i>	
O2 Holder - Left Side [5VACC032]	£303
O2 Holder - Right Side [5VACC033]	£303
Transit Wheels [5VACC035]	£236
<i>Not available with Step Tube, Rear Seat Heights less than 14.5" or 350 lb Weight Capacity</i>	

## Color

Options	Price	Colors																							
		Gloss														Matte					Metallic				
		Black	Yellow	Light Pink	Dark Pink	Glacier Blue	Electric Green	Radiant Orange	Opalescent Violet	Purple Plum	Rich Teal	Metallic Orange	Granny Smith	Candy Red	Candy Blue	Candy Purple	Shadow Black	Tactical Green	Dry Earth Tan	White	Bright Red	Royal Blue	Charcoal Gray	Iridescent Navy	Iridescent Burgundy
Frame	N/C																								
Color Accent <sup>1,2</sup> Package	N/C																								

<sup>1</sup> Includes axle plates and forks. Universal axle plate only. Not available with amputee axle plate, or one-arm drive.

<sup>2</sup> Limited Time Promotional Pricing

### Hydrographics

Not available with Frame Color. Hydrographics Base Color required with Hydrographics. Zebra not available with Black.

Options	Price	Hydrographics					Hydrographics Base Color							
		AOR1 (Desert Digital Camo)	NEXT Camo	Pink Camo	Carbon Fiber	Muddy Girl	Zebra	Black	Blue	Granny Smith	Pink	Purple	Red	
Frame	£725													
Base Color	N/C													

### Anodized Standard Caster Housing Color

Select desired color. If no selection is made, black will be used.

Option	Standard <sup>2</sup> Caster Housing	Caster Fork <sup>3</sup>	Axle Plate
Retail	£61	£61	£61
Black <sup>1</sup>	[5VANOHO1]	[5VANOF01]	[5VANOP01]
Blue	[5VANOHO2]	[5VANOF02]	[5VANOP02]
Bright Green	[5VANOHO3]	[5VANOF03]	[5VANOP03]
Orange	[5VANOHO5]	[5VANOF05]	[5VANOP05]
Pewter	[5VANOHO6]	[5VANOF06]	[5VANOP06]
Pink	[5VANOHO7]	[5VANOF07]	[5VANOP07]
Purple	[5VANOHO8]	[5VANOF08]	[5VANOP08]
Red	[5VANOHO9]	[5VANOF09]	[5VANOP09]

<sup>1</sup> Black is no charge

<sup>2</sup> Available only if corresponding option selection was made

<sup>3</sup> Not available with 2" wide casters, Frog Legs Suspension Fork or Frog Legs II Suspension System

Catalyst Front Seat Height Matrix																							
4" Caster				5" Caster				6" Caster				7" Caster				8" Caster							
FSH	Super Low	Stem	Fork	FSH	Super Low	Stem	Fork	FSH	Super Low	Stem	Fork	FSH	Super Low	Stem	Fork	FSH	Super Low	Stem	Fork				
15	13.5	Std	4"	16	14.5	Std	4"	17	15.5	Std	5"	18	16.5	Std	6"	19	17.5	Std	6"	6"			
15.5	14			16.5	15.5	3/4		17.5	16.5	3/4		18.5	17			19.5	18.5	3/4					
15.5 <sup>1</sup>	14 <sup>1</sup>	3/4		17.5	16	1 1/2		18.5	17	1 1/2		18.5	17.5	3/4		20.5	n/a	1 1/2					
16	14.5			1 1/2	16	14.5	Std	17	15.5	Std	19	18	1 1/2			19	17.5	Std					
16.5 <sup>1</sup>	15 <sup>1</sup>	16.5			15	17.5		16	18		16.5	19.5		18		20	18.5						
17	15.5	16.5			15.5	3/4	5"	17	16		3/4	17.5		16.5		Std	20.5		19		Std		
15.5	14	Std	17.5	16	18			17	3/4	6"		19	17.5	Std	19.5		18.5	3/4					
16	14.5		3/4	18	16.5	1 1/2		18.5	17.5	1 1/2		19.5	18		3/4		20		19	Std			
16	15	1 1/2		16.5	15		Std	18.5	17		Std	20	18.5	Std		20.5	n/a		3/4				
16.5	15.5		17	15.5	19	17.5		19.5	18			20	18.5			21	n/a	1 1/2					
17	15.5		17.5	16	18.5	17		19.5	18	20		18.5	21		n/a								
17.5	16	Std	5"	17.5	16	3/4	6"	18	16.5	Std	7"	20	19	3/4	7"	20.5	19	1 1/2	7"				
16.5	15			3/4	18			16.5	1 1/2			18.5	17			Std	20.5			n/a	1 1/2	21	n/a
17	16	1 1/2			18.5	17		1 1/2				19	17.5	3/4			20			18.5		Std	20.5
17.5	16.5			1 1/2	18	16.5	Std		19.5	18		3/4	20.5			19	Std	21		n/a	1 1/2		
18	16.5				Std	18.5			17	1 1/2			18.5			17.5		1 1/2		19			18
18.5	17	3/4		19		17.5	Std	19.5	18			Std	20	18.5		Std	21			n/a	1 1/2		
18	16.5		1 1/2	18.5		17		Std	19		17.5		1 1/2	20	18.5		Std		20.5	19		Std	
18.5	17.5	3/4		18.5	17	Std	19		17.5	Std	20	18.5		Std	21	n/a		1 1/2					
19	18			1 1/2	18.5		17.5		3/4		19	18			1 1/2	20			18.5	Std	20.5		19
19.5	18.5	Std	19		18	3/4	20	18.5		Std	21	n/a	Std	20.5		19	Std						
20	19		1 1/2		19.5		18.5	1 1/2			20.5	19		1 1/2		21		n/a	Std		20.5	19	Std
				19.5	18	1 1/2	6" x 2" caster not available with 5" fork																
				20	18.5		1 1/2																
				20.5	19																		

<sup>1</sup> Not available with 4 x 1.5" Soft Roll Aluminum

Seat heights with "FSH" heading available with Standard Front Frame. Seat heights with "Super Low" heading available with Super Low Front Frame. Actual seat height may vary depending upon configuration.



## Axiom G

Weight capacity: 350 lbs

		Width							
		14"	15"	16"	17"	18"	19"	20"	22"
Retail		£85	£85	£85	£85	£85	£85	£85	£85
Depth	14"	[XG1414]							
	15"	[XG1415]	[XG1515]	[XG1615]					
	16"	[XG1416]	[XG1516]	[XG1616]	[XG1716]	[XG1816]	[XG1916]	[XG2016]	
	17"	[XG1417]	[XG1517]	[XG1617]	[XG1717]	[XG1817]	[XG1917]	[XG2017]	
	18"	[XG1418]	[XG1518]	[XG1618]	[XG1718]	[XG1818]	[XG1918]	[XG2018]	[XG2218]
	19"		[XG1519]	[XG1619]	[XG1719]	[XG1819]	[XG1919]	[XG2019]	[XG2219]
	20"		[XG1520]	[XG1620]	[XG1720]	[XG1820]	[XG1920]	[XG2020]	[XG2220]
	21"			[XG1621]		[XG1821]	[XG1921]	[XG2021]	[XG2221]
22"			[XG1622]		[XG1822]	[XG1922]	[XG2022]	[XG2222]	

## Axiom G - General Use Cushion with Extra Outer Cover

Weight capacity: 350 lbs

		Width							
		14"	15"	16"	17"	18"	19"	20"	22"
Retail		£125	£125	£125	£125	£125	£125	£125	£125
Depth	14"	[XG1414C2]							
	15"	[XG1415C2]	[XG1515C2]	[XG1615C2]					
	16"	[XG1416C2]	[XG1516C2]	[XG1616C2]	[XG1716C2]	[XG1816C2]	[XG1916C2]	[XG2016C2]	
	17"	[XG1417C2]	[XG1517C2]	[XG1617C2]	[XG1717C2]	[XG1817C2]	[XG1917C2]	[XG2017C2]	
	18"	[XG1418C2]	[XG1518C2]	[XG1618C2]	[XG1718C2]	[XG1818C2]	[XG1918C2]	[XG2018C2]	[XG2218C2]
	19"		[XG1519C2]	[XG1619C2]	[XG1719C2]	[XG1819C2]	[XG1919C2]	[XG2019C2]	[XG2219C2]
	20"		[XG1520C2]	[XG1620C2]	[XG1720C2]	[XG1820C2]	[XG1920C2]	[XG2020C2]	[XG2220C2]
	21"			[XG1621C2]		[XG1821C2]	[XG1921C2]	[XG2021C2]	[XG2221C2]
22"			[XG1622C2]		[XG1822C2]	[XG1922C2]	[XG2022C2]	[XG2222C2]	

## Axiom S - Skin Protection Cushion

Weight capacity: 350 lbs

		Width							
		14"	15"	16"	17"	18"	19"	20"	22"
	Retail	£120	£120	£120	£120	£120	£120	£120	£120
Depth	14"	[XS1414]							
	15"	[XS1415]	[XS1515]	[XS1615]					
	16"	[XS1416]	[XS1516]	[XS1616]	[XS1716]	[XS1816]	[XS1916]	[XS2016]	
	17"	[XS1417]	[XS1517]	[XS1617]	[XS1717]	[XS1817]	[XS1917]	[XS2017]	
	18"	[XS1418]	[XS1518]	[XS1618]	[XS1718]	[XS1818]	[XS1918]	[XS2018]	[XS2218]
	19"		[XS1519]	[XS1619]	[XS1719]	[XS1819]	[XS1919]	[XS2019]	[XS2219]
	20"		[XS1520]	[XS1620]	[XS1720]	[XS1820]	[XS1920]	[XS2020]	[XS2220]
	21"			[XS1621]		[XS1821]	[XS1921]	[XS2021]	[XS2221]
22"			[XS1622]		[XS1822]	[XS1922]	[XS2022]	[XS2222]	

## Axiom S - Skin Protection Cushion with Extra Outer Cover

Weight capacity: 350 lbs

		Width							
		14"	15"	16"	17"	18"	19"	20"	22"
	Retail	£160	£160	£160	£160	£160	£160	£160	£160
Depth	14"	[XS1414C2]							
	15"	[XS1415C2]	[XS1515C2]	[XS1615C2]					
	16"	[XS1416C2]	[XS1516C2]	[XS1616C2]	[XS1716C2]	[XS1816C2]	[XS1916C2]	[XS2016C2]	
	17"	[XS1417C2]	[XS1517C2]	[XS1617C2]	[XS1717C2]	[XS1817C2]	[XS1917C2]	[XS2017C2]	
	18"	[XS1418C2]	[XS1518C2]	[XS1618C2]	[XS1718C2]	[XS1818C2]	[XS1918C2]	[XS2018C2]	[XS2218C2]
	19"		[XS1519C2]	[XS1619C2]	[XS1719C2]	[XS1819C2]	[XS1919C2]	[XS2019C2]	[XS2219C2]
	20"		[XS1520C2]	[XS1620C2]	[XS1720C2]	[XS1820C2]	[XS1920C2]	[XS2020C2]	[XS2220C2]
	21"			[XS1621C2]		[XS1821C2]	[XS1921C2]	[XS2021C2]	[XS2221C2]
22"			[XS1622C2]		[XS1822C2]	[XS1922C2]	[XS2022C2]	[XS2222C2]	

## Axiom P - Positioning Cushion

Weight capacity: 350 lbs

		Width							
		14"	15"	16"	17"	18"	19"	20"	22"
	Retail	£170	£170	£170	£170	£170	£170	£170	£170
Depth	14"	[XP1414]							
	15"	[XP1415]	[XP1515]	[XP1615]					
	16"	[XP1416]	[XP1516]	[XP1616]	[XP1716]	[XP1816]	[XP1916]	[XP2016]	
	17"	[XP1417]	[XP1517]	[XP1617]	[XP1717]	[XP1817]	[XP1917]	[XP2017]	
	18"	[XP1418]	[XP1518]	[XP1618]	[XP1718]	[XP1818]	[XP1918]	[XP2018]	[XP2218]
	19"		[XP1519]	[XP1619]	[XP1719]	[XP1819]	[XP1919]	[XP2019]	[XP2219]
	20"		[XP1520]	[XP1620]	[XP1720]	[XP1820]	[XP1920]	[XP2020]	[XP2220]
	21"			[XP1621]		[XP1821]	[XP1921]	[XP2021]	[XP2221]
22"			[XP1622]		[XP1822]	[XP1922]	[XP2022]	[XP2222]	

## Axiom P - Positioning Cushion with Extra Outer Cover

Weight capacity: 350 lbs

		Width							
		14"	15"	16"	17"	18"	19"	20"	22"
Retail		£210	£210	£210	£210	£210	£210	£210	£210
Depth	14"	[XP1414C2]							
	15"	[XP1415C2]	[XP1515C2]	[XP1615C2]					
	16"	[XP1416C2]	[XP1516C2]	[XP1616C2]	[XP1716C2]	[XP1816C2]	[XP1916C2]	[XP2016C2]	
	17"	[XP1417C2]	[XP1517C2]	[XP1617C2]	[XP1717C2]	[XP1817C2]	[XP1917C2]	[XP2017C2]	
	18"	[XP1418C2]	[XP1518C2]	[XP1618C2]	[XP1718C2]	[XP1818C2]	[XP1918C2]	[XP2018C2]	[XP2218C2]
	19"		[XP1519C2]	[XP1619C2]	[XP1719C2]	[XP1819C2]	[XP1919C2]	[XP2019C2]	[XP2219C2]
	20"		[XP1520C2]	[XP1620C2]	[XP1720C2]	[XP1820C2]	[XP1920C2]	[XP2020C2]	[XP2220C2]
	21"			[XP1621C2]		[XP1821C2]	[XP1921C2]	[XP2021C2]	[XP2221C2]
22"			[XP1622C2]		[XP1822C2]	[XP1922C2]	[XP2022C2]	[XP2222C2]	

## Axiom SP Visco - Skin Protection & Positioning Cushion

Weight capacity: 350 lbs

		Width								
		14"	15"	16"	17"	18"	19"	20"	21"	22"
Retail		£350	£350	£350	£350	£350	£350	£350	£350	£350
Depth	14"	[XSP1414V]	[XSP1514V]	[XSP1614V]						
	15"	[XSP1415V]	[XSP1515V]	[XSP1615V]	[XSP1715V]	[XSP1815V]				
	16"	[XSP1416V]	[XSP1516V]	[XSP1616V]	[XSP1716V]	[XSP1816V]	[XSP1916V]	[XSP2016V]		[XSP2216V]
	17"	[XSP1417V]	[XSP1517V]	[XSP1617V]	[XSP1717V]	[XSP1817V]	[XSP1917V]	[XSP2017V]		[XSP2217V]
	18"	[XSP1418V]	[XSP1518V]	[XSP1618V]	[XSP1718V]	[XSP1818V]	[XSP1918V]	[XSP2018V]	[XSP2118V]	[XSP2218V]
	19"	[XSP1419V]	[XSP1519V]	[XSP1619V]	[XSP1719V]	[XSP1819V]	[XSP1919V]	[XSP2019V]	[XSP2119V]	[XSP2219V]
	20"	[XSP1420V]	[XSP1520V]	[XSP1620V]	[XSP1720V]	[XSP1820V]	[XSP1920V]	[XSP2020V]	[XSP2120V]	[XSP2220V]
	21"		[XSP1521V]	[XSP1621V]	[XSP1721V]	[XSP1821V]	[XSP1921V]	[XSP2021V]	[XSP2121V]	[XSP2221V]
22"		[XSP1522V]	[XSP1622V]	[XSP1722V]	[XSP1822V]	[XSP1922V]	[XSP2022V]	[XSP2122V]	[XSP2222V]	

## Axiom SP Visco - Skin Protection & Positioning Cushion with Extra Outer Cover

Weight capacity: 350 lbs

		Width								
		14"	15"	16"	17"	18"	19"	20"	21"	22"
Retail		£410	£410	£410	£410	£410	£410	£410	£410	£410
Depth	14"	[XSP1414VC2]	[XSP1514VC2]	[XSP1614VC2]						
	15"	[XSP1415VC2]	[XSP1515VC2]	[XSP1615VC2]	[XSP1715VC2]	[XSP1815VC2]				
	16"	[XSP1416VC2]	[XSP1516VC2]	[XSP1616VC2]	[XSP1716VC2]	[XSP1816VC2]	[XSP1916VC2]	[XSP2016VC2]		[XSP2216VC2]
	17"	[XSP1417VC2]	[XSP1517VC2]	[XSP1617VC2]	[XSP1717VC2]	[XSP1817VC2]	[XSP1917VC2]	[XSP2017VC2]		[XSP2217VC2]
	18"	[XSP1418VC2]	[XSP1518VC2]	[XSP1618VC2]	[XSP1718VC2]	[XSP1818VC2]	[XSP1918VC2]	[XSP2018VC2]	[XSP2118VC2]	[XSP2218VC2]
	19"	[XSP1419VC2]	[XSP1519VC2]	[XSP1619VC2]	[XSP1719VC2]	[XSP1819VC2]	[XSP1919VC2]	[XSP2019VC2]	[XSP2119VC2]	[XSP2219VC2]
	20"	[XSP1420VC2]	[XSP1520VC2]	[XSP1620VC2]	[XSP1720VC2]	[XSP1820VC2]	[XSP1920VC2]	[XSP2020VC2]	[XSP2120VC2]	[XSP2220VC2]
	21"		[XSP1521VC2]	[XSP1621VC2]	[XSP1721VC2]	[XSP1821VC2]	[XSP1921VC2]	[XSP2021VC2]	[XSP2121VC2]	[XSP2221VC2]
22"		[XSP1522VC2]	[XSP1622VC2]	[XSP1722VC2]	[XSP1822VC2]	[XSP1922VC2]	[XSP2022VC2]	[XSP2122VC2]	[XSP2222VC2]	

## Axiom SP Fluid - Skin Protection & Positioning Cushion

Weight capacity: 350 lbs

		Width								
		14"	15"	16"	17"	18"	19"	20"	21"	22"
Retail		£320	£320	£320	£320	£320	£320	£320	£320	£320
Depth	14"	[XSP1414F]	[XSP1514F]	[XSP1614F]						
	15"	[XSP1415F]	[XSP1515F]	[XSP1615F]	[XSP1715F]	[XSP1815F]				
	16"	[XSP1416F]	[XSP1516F]	[XSP1616F]	[XSP1716F]	[XSP1816F]	[XSP1916F]	[XSP2016F]		[XSP2216F]
	17"	[XSP1417F]	[XSP1517F]	[XSP1617F]	[XSP1717F]	[XSP1817F]	[XSP1917F]	[XSP2017F]		[XSP2217F]
	18"	[XSP1418F]	[XSP1518F]	[XSP1618F]	[XSP1718F]	[XSP1818F]	[XSP1918F]	[XSP2018F]	[XSP2118F]	[XSP2218F]
	19"	[XSP1419F]	[XSP1519F]	[XSP1619F]	[XSP1719F]	[XSP1819F]	[XSP1919F]	[XSP2019F]	[XSP2119F]	[XSP2219F]
	20"	[XSP1420F]	[XSP1520F]	[XSP1620F]	[XSP1720F]	[XSP1820F]	[XSP1920F]	[XSP2020F]	[XSP2120F]	[XSP2220F]
	21"		[XSP1521F]	[XSP1621F]	[XSP1721F]	[XSP1821F]	[XSP1921F]	[XSP2021F]	[XSP2121F]	[XSP2221F]
	22"		[XSP1522F]	[XSP1622F]	[XSP1722F]	[XSP1822F]	[XSP1922F]	[XSP2022F]	[XSP2122F]	[XSP2222F]

## Axiom SP Fluid - Skin Protection & Positioning Cushion with Extra Outer Cover

Weight capacity: 350 lbs

		Width								
		14"	15"	16"	17"	18"	19"	20"	21"	22"
Retail		£360	£360	£360	£360	£360	£360	£360	£360	£360
Depth	14"	[XSP1414FC2]	[XSP1514FC2]	[XSP1614FC2]						
	15"	[XSP1415FC2]	[XSP1515FC2]	[XSP1615FC2]	[XSP1715FC2]	[XSP1815FC2]				
	16"	[XSP1416FC2]	[XSP1516FC2]	[XSP1616FC2]	[XSP1716FC2]	[XSP1816FC2]	[XSP1916FC2]	[XSP2016FC2]		[XSP2216FC2]
	17"	[XSP1417FC2]	[XSP1517FC2]	[XSP1617FC2]	[XSP1717FC2]	[XSP1817FC2]	[XSP1917FC2]	[XSP2017FC2]		[XSP2217FC2]
	18"	[XSP1418FC2]	[XSP1518FC2]	[XSP1618FC2]	[XSP1718FC2]	[XSP1818FC2]	[XSP1918FC2]	[XSP2018FC2]	[XSP2118FC2]	[XSP2218FC2]
	19"	[XSP1419FC2]	[XSP1519FC2]	[XSP1619FC2]	[XSP1719FC2]	[XSP1819FC2]	[XSP1919FC2]	[XSP2019FC2]	[XSP2119FC2]	[XSP2219FC2]
	20"	[XSP1420FC2]	[XSP1520FC2]	[XSP1620FC2]	[XSP1720FC2]	[XSP1820FC2]	[XSP1920FC2]	[XSP2020FC2]	[XSP2120FC2]	[XSP2220FC2]
	21"		[XSP1521FC2]	[XSP1621FC2]	[XSP1721FC2]	[XSP1821FC2]	[XSP1921FC2]	[XSP2021FC2]	[XSP2121FC2]	[XSP2221FC2]
	22"		[XSP1522FC2]	[XSP1622FC2]	[XSP1722FC2]	[XSP1822FC2]	[XSP1922FC2]	[XSP2022FC2]	[XSP2122FC2]	[XSP2222FC2]

Axiom Back Width	Fits Back Frame Widths	
	Inner Slots	Outer Slots
12" (30.5cm)	11" (28.0cm)	12" -14" (30.5cm - 35.5cm)
14" (35.5cm)	12" -13" (30.5cm - 33.0cm)	14" -16" (35.5cm - 40.5cm)
16" (40.5cm)	14" -15" (35.5cm - 38.0cm)	16" -18" (40.5cm - 45.5cm)
18" (45.5cm)	16" - 17" (40.5cm - 43.0cm)	18" - 20" (45.5cm - 51.0cm)
20" (51.0cm)	18" -19" (45.5cm - 48.5cm)	20" -22" (51.0cm - 56.0cm)
22" (56.0cm)	20" -21" (51.0cm - 53.5cm)	22" -24" (56.0cm - 61.0cm)

Hardware Description	Code
Improved DEX Hardware, removable adjustable hardware (300 lb max user weight)	<b>DEX</b>
New BTX Hardware, removable adjustable hardware not recommended for, or installed on Ultralight Rigid Frame Wheelchairs (400 lb max user weight)	<b>BTX</b>
New Fixed Hardware, non-removeable hardware up to (300 lb max user weight)	<b>FXT</b>



## Axiom Back

*Hardware is included with back. Low Back selections are not available with headrests, modifications, or posture supports.*

### Axiom Posterior Back (PB)

		Width						
		12"	14"	16"	18"	20"	22"	
Retail		£550	£550	£550	£550	£550	£550	
Height	Low	8"	[AXPB1208]	[AXPB1408]	[AXPB1608]	[AXPB1808]	[AXPB2008]	
		10"		[AXPB1410]	[AXPB1610]	[AXPB1810]	[AXPB2010]	[AXPB2210]
		12"	[AXPB1212]	[AXPB1412]	[AXPB1612]	[AXPB1812]	[AXPB2012]	
	Mid	14"		[AXPB1414]	[AXPB1614]	[AXPB1814]	[AXPB2014]	[AXPB2214]
		16"	[AXPB1216]	[AXPB1416]	[AXPB1616]	[AXPB1816]	[AXPB2016]	
		18"		[AXPB1418]	[AXPB1618]	[AXPB1818]	[AXPB2018]	[AXPB2218]

### Back Hardware

*FXT Hardware is not available with Lateral Support Options*

DEX Hardware [DEX]    BTX Hardware [BTX]    FXT Hardware [FXT] \_\_\_\_\_ N/C



Phone (800) 981-1540 | Fax (715) 254-0996  
 sales@kimobility.com | www.kimobility.com



### Lateral Support

Pair	Description	Item Code	Pair
	3 x 4 Lateral Pads with Fixed Mounting Hardware - Pair	PBLF3x4PP	£295
	4 x 5 Lateral Pads with Fixed Mounting Hardware - Pair	PBLF4x5PP	£295
	3 x 4 Lateral Pads with Swing Away Mounting Hardware - Pair	PBLS3X4PP	£628
	4 x 5 Lateral Pads with Swing Away Mounting Hardware - Pair	PBLS4X5PP	£628
	3 x 4 Lateral Pads with Adjustable Swing Away Mounting Hardware - Pair	PBLAS3X4PP	£628
	4 x 5 Lateral Pads with Adjustable Swing Away Mounting Hardware - Pair	PBLAS4X5PP	£628

### Axiom Posterior Lateral Back (PL)

		Width						
		12"	14"	16"	18"	20"	22"	
Retail		£550	£550	£550	£550	£550	£550	
Height	Low	8"	[AXPL1208]	[AXPL1408]	[AXPL1608]	[AXPL1808]	[AXPL2008]	
		10"		[AXPL1410]	[AXPL1610]	[AXPL1810]	[AXPL2010]	[AXPL2210]
		12"	[AXPL1212]	[AXPL1412]	[AXPL1612]	[AXPL1812]	[AXPL2012]	
	Mid	14"		[AXPL1414]	[AXPL1614]	[AXPL1814]	[AXPL2014]	[AXPL2214]
		16"	[AXPL1216]	[AXPL1416]	[AXPL1616]	[AXPL1816]	[AXPL2016]	
		18"		[AXPL1418]	[AXPL1618]	[AXPL1818]	[AXPL2018]	[AXPL2218]
	Tail	20"	[AXPL1220]	[AXPL1420]	[AXPL1620]	[AXPL1820]	[AXPL2020]	
		22"		[AXPL1422]	[AXPL1622]	[AXPL1822]	[AXPL2022]	[AXPL2222]

### Back Hardware

*FXT Hardware is not available with Lateral Support Options*

DEX Hardware [DEX]    BTX Hardware [BTX]    FXT Hardware [FXT] \_\_\_\_\_ N/C

### Lateral Support

Pair	Description	Item Code	Pair
	3 x 4 Lateral Pads with Fixed Mounting Hardware - Pair	PLLF3x4PP	£295
	4 x 5 Lateral Pads with Fixed Mounting Hardware - Pair	PLLF4x5PP	£295
	3 x 4 Lateral Pads with Swing Away Mounting Hardware - Pair	PLLS3x4PP	£628
	4 x 5 Lateral Pads with Swing Away Mounting Hardware - Pair	PLLS4x5PP	£628
	3 x 4 Lateral Pads with Adjustable Swing Away Mounting Hardware - Pair	PLLAS3x4PP	£628
	4 x 5 Lateral Pads with Adjustable Swing Away Mounting Hardware - Pair	PLLAS4x5PP	£628

### Axiom Deep Lateral Back (DL)

		Width						
		12"	14"	16"	18"	20"	22"	
Retail		£550	£550	£550	£550	£550	£550	
Height	Mid	14"	[AXDL1214]	[AXDL1414]	[AXDL1614]	[AXDL1814]	[AXDL2014]	[AXDL2214]
		16"		[AXDL1416]	[AXDL1616]	[AXDL1816]	[AXDL2016]	
		18"	[AXDL1218]	[AXDL1418]	[AXDL1618]	[AXDL1818]	[AXDL2018]	[AXDL2218]
	Tail	20"	[AXDL1220]	[AXDL1420]	[AXDL1620]	[AXDL1820]	[AXDL2020]	
		22"		[AXDL1422]	[AXDL1622]	[AXDL1822]	[AXDL2022]	[AXDL2222]

### Back Hardware

DEX Hardware [DEX]    BTX Hardware [BTX]    FXT Hardware [FXT] \_\_\_\_\_ N/C



Phone (800) 981-1540 | Fax (715) 254-0996  
 sales@kimobility.com | www.kimobility.com



## Headrest

Description	Std. Straight Removable Adjustable Hardware		Multi-Axis Removable Adjustable Hardware		Posalinc Removable Adjustable Hardware		Posalinc Flip-Back Adjustable Hardware	
	Item Code	Retail	Item Code	Retail	Item Code	Retail	Item Code	Retail
Comfort Soft Headrest 8"	[CS08SS]	£268	[CS08MA]	£268	[CS08PL]	£268	[CS08PLF]	N/C
Comfort Soft Headrest 10"	[CS10SS]	£268	[CS10MA]	£268	[CS10PL]	£268	[CS10PLF]	N/C
Comfort Soft Headrest 14"	[CS14SS]	£268	[CS14MA]	£268	[CS14PL]	£268	[CS14PLF]	N/C
Contour Positioning Pad, 8" X 6.25"	[CP08SS]	£303	[CP08MA]	£303	[CP08PL]	£303	[CP08PLF]	N/C
Contour Positioning Pad, 9" X 6.5"	[CP09SS]	£303	[CP09MA]	£303	[CP09PL]	£303	[CP09PLF]	N/C
Contour Positioning Pad, 10" X 7.5"	[CP10SS]	£303	[CP10MA]	£303	[CP10PL]	£303	[CP10PLF]	N/C
Tri-soft Headrest 10"	[TS10SS]	£386	[TS10MA]	£386	[TS10PL]	£386	[TS10PLF]	N/C
Tri-soft Headrest 14"	[TS14SS]	£386	[TS14MA]	£386	[TS14PL]	£386	[TS14PLF]	N/C

Description	Item Code	Retail
Universal Headrest Mounting Plate	[UMP]	£43

*Not required for Axiom Headrests*

## Anterior Trunk Supports

*Selection of Anterior Thoracic Mounting Modification required in order to mount posture supports. Not available with Low Backs.*

Anterior Trunk Supports		
Description	Item Code	Retail
Dynaform Chest Support: 2-Piece with Hook&Loop, 3" High Pad, Small	[14941]	£100
Dynaform Chest Support: 2-Piece with Hook&Loop, 4" High Pad, Medium	[14942]	£100
Dynaform Chest Support: 2-Piece with Hook&Loop, 5" High Pad, Large	[14943]	£100
Dynaform Chest Support: 1-Piece with Buckle, 3" Height x 18" Width, Small	[14924]	£100
Dynaform Chest Support: 1-Piece with Buckle, 4" Height x 20" Width, Medium	[14927]	£100
Dynaform Chest Support: 1-Piece with Buckle, 4" Height x 22" Width, Large	[14928]	£100
Dynaform Anterior Trunk Support: Standard, Dynamic, X-Small	[14851]	£100
Dynaform Anterior Trunk Support: Standard, Dynamic, Small	[14852]	£100
Dynaform Anterior Trunk Support: Standard, Dynamic, Medium	[14853]	£100
Dynaform Anterior Trunk Support: Standard, Dynamic, Large	[14854]	£100
Dynaform Anterior Trunk Support: Slim Cut, Dynamic, X-Small	[14856]	£100
Dynaform Anterior Trunk Support: Slim Cut, Dynamic, Small	[14857]	£100
Dynaform Anterior Trunk Support: Slim Cut, Dynamic, Medium	[14858]	£100
Dynaform Anterior Trunk Support: Slim Cut, Dynamic, Large	[14859]	£100
AirLogic Anterior Trunk Support: Standard, Structure, Small	[14282]	£300
AirLogic Anterior Trunk Support: Standard, Structure, Medium	[14283]	£300
AirLogic Anterior Trunk Support: Standard, Structure, Large	[14284]	£300
AirLogic Anterior Trunk Support: Standard, Structure, X-Large	[14285]	£300
AirLogic Anterior Trunk Support: Slim Cut, Dynamic, Small	[14257]	£300
AirLogic Anterior Trunk Support: Slim Cut, Dynamic, Medium	[14258]	£300
AirLogic Anterior Trunk Support: Slim Cut, Dynamic, Large	[14259]	£300
AirLogic Anterior Trunk Support: Slim Cut, Dynamic, X-Large	[14260]	£300

## Accessories

Adjustable Shoulder Guides [AXBSG] <i>Includes Anterior Thoracic Mounting Modification. Not available with Low Backs.</i>	£43
Lumbar Pad [LUMPAD] <i>Available only with Axiom Lateral Back and Axiom Deep Lateral back</i>	N/C
Privacy Flap [PRFLAP]	£44

## Axiom Back Modifications

### Axiom Back Modifications

*Extended lead times will apply for all modifications. Makes back non-refundable.*

Anterior Thoracic Mounting Modification [AXSMM] <i>Provides holes for Anterior Thoracic Supports and Shoulder Guides</i>	N/C
---	-----

### Gloss Finish Back Shell

*If no selection is made, standard Shadow Black will be used with no additional lead time*

Opalescent Violet [AXMOVI]	N/C
Radiant Orange [AXMROR]	N/C
Electric Green [AXMEGN]	N/C
Glacier Blue [AXMGBL]	N/C
Dark Pink [AXMDPK]	N/C
Light Pink [AXMLPK]	N/C
Rich Teal [AXMRTE]	N/C
Purple Plum [AXMPLM]	N/C
Black [AXMBLK]	N/C
Candy Blue [AXMCBL]	N/C
Candy Purple [AXMPUR]	N/C
Candy Red [AXMRED]	N/C
Granny Smith [AXMGSM]	N/C
Metallic Orange [AXMMOR]	N/C
Yellow [AXMYLW]	N/C

### Matte Finish Back Shell

*If no selection is made, standard Shadow Black will be used with no additional lead time*

Bright Red [AXMBRR]	N/C
White [AXMWHT]	N/C
Dry Earth Tan [AXMTAN]	N/C
Tactical Green [AXMTGR]	N/C
Charcoal Gray [AXMCGM]	N/C
Iridescent Burgundy [AXMIBM]	N/C
Iridescent Navy [AXMINM]	N/C
Royal Blue [AXMRBM]	N/C

### Metallic Finish Back Shell

*If no selection is made, standard Shadow Black will be used with no additional lead time*

Blue Steel [AXMBLS]	N/C
---------------------	-----