

CHAMP MOBILITY

ChampDriver USER' S MANUAL

CHAMPDRIVER

WWW.CHAMPMOBILITY.COM



CE



CONTENT

Preface

1

Parameter

3

Diagram

4

Installation

5

Operation

6

Maintenance

7

Warranty

8

ChampDriver is intended to provide additional power to manual wheelchairs to save user's pushing power. It could fit with most of the manual wheelchairs. Push to go, and brake on the rims to brake. Let's GO!

1. READ BEFORE USING

Please carefully read this owner's manual before using ChampDriver. Improper use of the device could result in harm or injury. Therefore, for safe and enjoyable use of the device, please read this owner's manual.

Signal words are used in this manual and apply to hazards or unsafe practices which could result in personal injury or property damage.

See the information below for definitions of the signal words.



DANGER

Danger indicates an imminently hazardous situation which, if not avoided, will result in death or serious injury.



WARNING

Warning indicates a potentially hazardous situation which, if not avoided, could result in death or serious injury.



CAUTION

Caution indicates a potentially hazardous situation which, if not avoided, may result in property damage or minor injury or both.

Please strictly observe all warnings and safety precautions issued by your wheelchair manufacturer. Failure to do so could result in serious injury or death.



WARNING

Always make sure that the power is OFF before getting into or out of the seat.



WARNING

STOP using the ChampDriver immediately, and call for assistance when it is not working correctly.



CAUTION

The max weight capacity is 100KG.



CAUTION

With regards to driving up and down slopes, please adhere to the instructions and specifications given by the diverse wheelchair manufacturers.



CAUTION

DO NOT use outdoor unless it can be operated safely indoor.



CAUTION

DO NOT use it in extreme weather or terrain.

2. PARAMETERS

Motor	250W 8" brushless gear motor		
Battery	Lithium battery	Battery spec.	6.6 Ah
Controller volt	24 V	Charger Input Voltage	220 V
Charger input volt	AC 220 V	Charger output current	DC 2±0.2 A
Motor volt	DC 24 V	Motor operating current	< 3A
Range	20 km	N.Weight	6.85 Kgs
Speed	L1: 2 km/h, L2: 4 km/h, L3: 6 km/h		

3. DIAGRAM



- A: Device body
- B: Connector bar
- C: Charger
- D: Clamp
- E: Control knob
- F: Charge hole
- G: Indicator light
- H: Wire jack

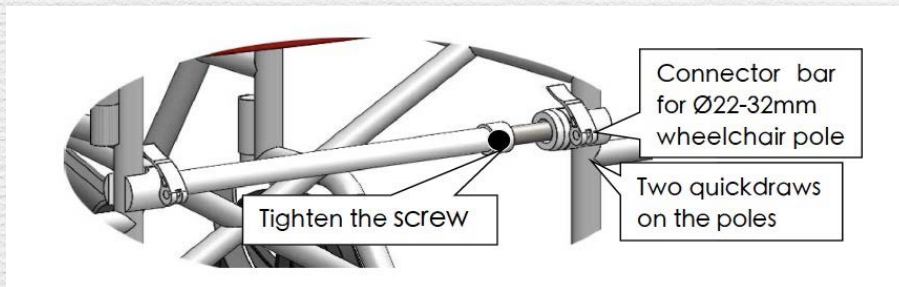


5.

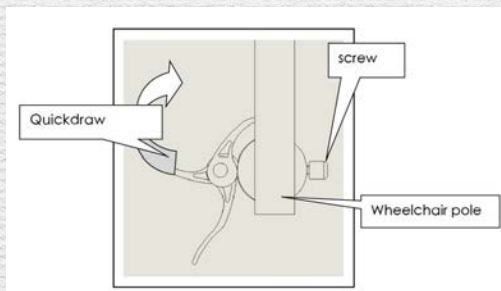
CHAMP MOBILITY

4. INSTALLATION

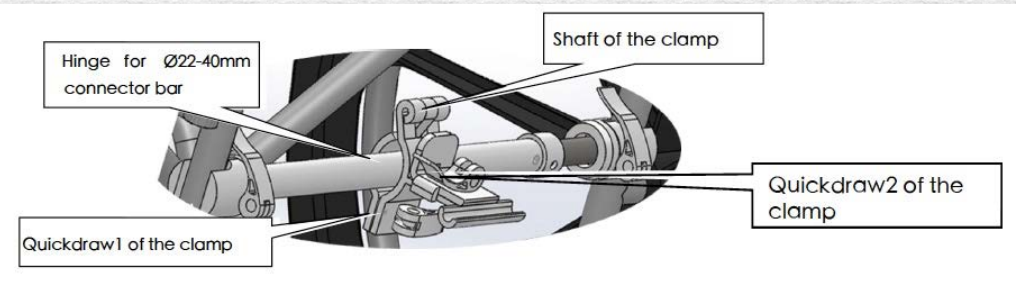
1. Fix the connector bar
 - a. Unfold the wheelchair, fix the connector bar to the wheelchair poles



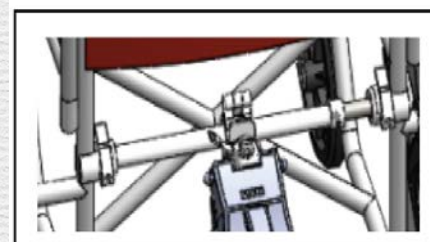
- b. Tighten the quickdraws:
 - i. tighten the screws of the quickdraws;
 - ii. tighten the quickdraws
- c. Tighten the screw of the connector bar



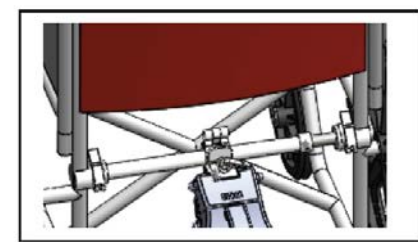
2. Fix the hinge
 - a. Fix the Hinge to the middle of the connector bar, and the shaft of the clamp should be above the connector bar. Tighten the quickdraw1 of the clamp.



4. Assemble and disassemble the device
 - a. Assemble the device:
 - Fix the device into the clamp and tighten the quickdraw2.
 - b. Disassemble the device:
 - Release the quickdraw2 and take off the device.
 - c. Connect the device and control box via wire jack.



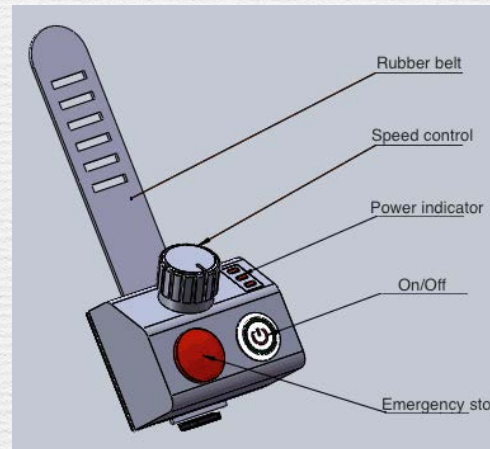
Release the quickdraw2



Tighten the quickdraw2

5. OPERATION

1. With the ChampDriver already connected to the wheelchair, press the start button, turn the speed knob clockwise gradually. The wheelchair will gradually slide. There are 3 speed levels from 2 km/h to 6 km/h.



2. When you are ready to stop:
 - a. turn the speed knob counterclockwise to P level, and then brake the wheelchair with your hands.
 - b. press the RED emergency stop button, and then brake with your hands. When you are ready to slide again, twist the RED stop button.



DANGER

As warned before, serious care should be taken on all hills, inclines, ramps, etc.

The rollback resistance may not be able to prevent the quick rolling back on especially steep slopes and / or for very heavy wheelchair users.

Anti-rollback is not a parking brake. Be sure to secure your wheelchair with brakes if stopping on a slope is desired.

3. When the LED indication light is blue, ChampDriver works properly. When the light is red, please charge ChampDriver.
4. The battery has been charged before leaving the factory. When user charges the battery, red light means it's on charge; blue light means the charge is finished.

6. MAINTENANCE



WARNING

Even if you don't use the device for a long time, the device should still be maintained and charged regularly. You should clean your ChampDriver regularly.

Please stop using the device and contact us if you have any of these problem:

1. Plastic shell/ parts get broken.
2. Missing or loose screws.
3. Loose clamp or connector bar.
4. Any of the rollers works with little resistance, or has any damage.
5. Any abnormal noise or activation from motor.

Clean and lubricating for rubber rollers

Clean the rubber rollers with wet cotton cloth as needed.

Lubricate the rollers as needed.



7. Warranty

1. For a period of 1 year from date of purchase, if device is determined to be defective, Champ Mobility will repair or replace the parts, at its option, at no charge to any device.
2. This warranty does not cover customer instruction, disassemble, set up adjustments.
3. This warranty does not cover damage due to acts of God, accident, misuse, abuse, negligence, or modification of, or to any part of the product, including the cable, controller, motor, or shell, etc..
4. This warranty does not cover damage due to improper operation or maintenance, connection to improper voltage supply, or attempter repair by anyone other than a facility authorized by Champ Mobility to service the product.



CHAMP MOBILITY

Add: No. 600 Tongjiang Road, Changzhou, China.

Tel: 0086 519 83215814

Website: www.champmobility.com/

Email: info@champmobility.com