

Unbeatable



Design. Technology. Performance.



Yes, you can.®

AVIVA RX

Our powerchairs take comfort to a whole new level

Our **AVIVA RX** powerchairs are designed to combat the challenges of everyday modern living. At home, at work, out and about, you'll be ready to face what the world throws at you. It's compact, adjustable (so it'll work with you, not against you) and is our most comfortable ride yet.



AVIVA chassis

Go wherever you want



You'll power up hills, cover bumpy cobbles like they're a smooth pavement and keep up with the pace of modern life. You'll see better and be seen, and you can personalise your chair to match your personality.

On a need-to-know basis

> Suspension

What's special about this base is our patented CTC Suspension. It gives you great **control**, superior **traction** and extra **comfort**. It's a compact chair that can really go the distance.

The suspension can be easily changed between hard and soft to suit you. The technology works a bit like a ball and socket joint, so the base can move in all directions giving you a smooth drive.

> LINX[®] G-TRAC[®] technology

The digital gyroscopic technology detects and corrects even the smallest deviation from your intended path, so you'll go exactly where you want to go without having to tweak the control direction. It's especially handy if you use any alternative control inputs with your chair.

The perfect balance

Stable on uneven ground like cobblestones

Tackles almost any terrain

Because all four wheels always stay in contact with the ground, you'll enjoy a smooth and comfortable drive.

Base technology

> Up hill

Going up hills won't be a struggle - you'll power up them, safely and effortlessly.

> Silent travels

There's no squeaking in the springs or chassis thanks to the elastomer dampeners.

To truly appreciate the quality of the AVIVA RX, you'll have to take a test drive and experience it for yourself.



Slim line design for those tight spaces

560 mm

Wide

420 mm

Seat to floor height*

73.5 Ah

Maximum battery size

Our chairs are only 560 mm wide, so small that narrow indoor spaces will feel that bit bigger:

- > Home
- > Local café
- > Shopping centre lifts
- > Office hallways

Navigate through confined areas with ease, whilst feeling safe and secure in your powerchair.

*AVIVA RX with Ultra Low Maxx

Small and compact turning circle

The petite base on the AVIVA RX has a tight turning radius. Turn in small spaces such as narrow hallways and shopping aisles with ease.



Ultra slim 560 mm



No compromise on distance

The AVIVA RX can cater for battery sizes up to a punchy 73.5 Ah giving you an extended power range. This combination is unique in a powerchair - No other powerchair is this compact with the long driving range. Smaller bases used to be hampered by the distance you could travel on them, not anymore - you can have both!





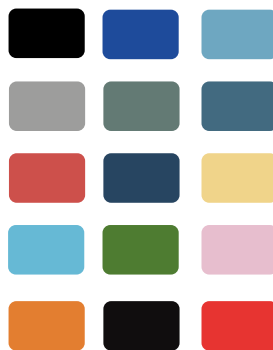
Express yourself

It's tailor made for you

Pick from a range of colours for the contoured shrouds, castors and wheel rim inserts. Black comes as standard, but you can also choose from blue, red, silver or purple. If that's not enough choice for you, you can pick any colour under the rainbow with RAL colours. We'll match whatever colour you want (at an additional cost).

Our powerchairs have sleek lines and a modern design, so you can feel confident being seen out and about in your chair.


Available colours



When dark nights set in

**Ultra-beam with
break protection.
No other chair
offers this!**





You'll be able to navigate the streets better with our new AXENDO powerful lighting system. They're stronger than most lighting systems you can get elsewhere, so you can see and be seen with confidence.

AXENDO lighting system offers road-legal light packages in two different versions.



Seat to floor height

Get closer

The AVIVA RX has an impressively low seat to floor height so you can get under tables and desks.

It also makes it easier for you to access wheelchair accessible vehicles (WAV).



420 mm

Adjustments

When your needs change, so can your chair

To make sure you can always sit comfortably in your chair, quick adjustments can be made to the width, length, suspension, height, centre of gravity and seat position.

You can adapt the chair to suit what's best for you with different battery sizes, motor speeds, wheel sizes and types, fork types, light options and docking stations.



**Choose a base that suits you
560 mm or 635 mm then
you'll have the following options:**

- > Soft, standard, hard or HD suspension
- > 435 mm, 460 mm or 485 mm seat to ground height (Modulite)
- > 420 mm, 435 mm, 460 mm or 485 mm seat to ground height (Ultra Low Maxx)
- > 3kmh, 6kmh, 10kmh & 12kmh speed options
- > 52 Ah, 60 Ah or 73.5 Ah battery size
- > 8" or 9" castors



Reach unbeatable heights

Lift feature allows you to raise up to 300 mm

When chatting to friends at a natural eye-level or reaching for objects on shelves.

> Discreet and dynamic

Thanks to a sleek elevation mechanism, you can alter the height of your system discreetly, whenever you want.

> Moves with you

There's no need to stop your chair prior to elevating or descending; the simply smart AVIVA RX allows you to utilise the lift feature whilst you are driving.



The seating systems

Ultra Low Maxx

We've paired the AVIVA RX's superior base with Ultra Low Maxx – the high end seating system that makes sure you enjoy perfect posture while feeling comfy in your chair.



170°

recline

50°

tilt

> Natural pivot points

Natural pivot points is the industry speak for our Ultra Low Maxx feature. It means your head, shoulders, hips and feet stay in contact with the chair, mimicking your body's natural pivot points. It's a snug fit that will leave you feeling safe in the chair.

> Supported at all times

No matter what dynamic positioning movements the seating system makes, you will remain comfortably supported at all times as the Ultra Low Maxx moves precisely with you.

> Built-in rail

This allows for accessories to be added to your powerchair depending on your needs and wants.

> Choose your seating

Width: 405-610 mm

Depth: 405-580 mm

Backrest height: 355-505 mm

Armrest height: 230-405 mm



The seating systems

One-piece

> All rounder

It's the perfect entry level seating system if you don't need high end postural support.

> Adjustable

The tension on the backrest can be adjusted to suit you, along with the adjustable arm and legrests



The seating systems

Modulte

Modulte gives you choices. Comfort and correct pressure management too often leads to a compromise in the seating set up. If your situation changes, so can the solution. For example, we can change one seating base for another, with ease.

- > A multi-functional, flexible seating system gives a complete range of postural solutions
- > Modulte offers a variety of seat support and cushion options for postural alignment and comfort

A personalised fit

Adapts to your needs:

- > Seat depth
- > Seat width
- > Backrest height
- > Armrest height
- > Seat height
- > Length of footrests

REM400 controls

3.5"

colour touch screen

Built-in Bluetooth 

Connect to your smart phone, laptop and smart speaker

 **Direct Access**

Jump straight into the menus - you have direct access to the profiles and functions

Touchscreen technology 

Swipe or tap our colour touch screen and be in control of where you go with our REM400 control

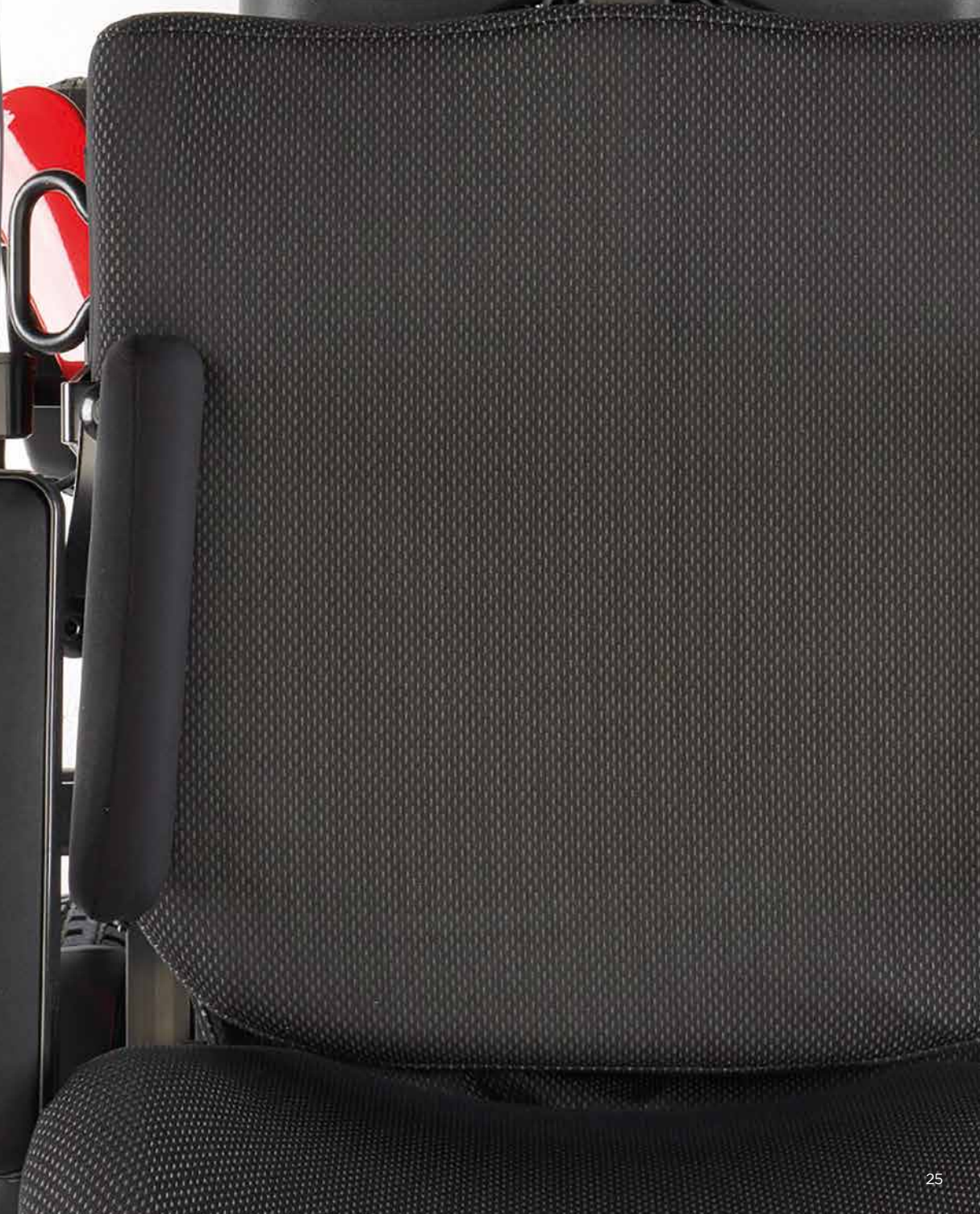
 **Ambidextrous**

The controls are adaptable for both left and right-handed use. If a standard joystick doesn't work for you, you can customise your chair with a specialist control

Clear speed gauge 

On the top left of the control screen is a speedometer, indicating the speed of your chair as you are driving it. An odometer is also present to record the distance you have travelled





Specialist controls



Single switch

Joystick



MEC »

Joystick



Extremity control »

Joystick



Paediatric compact

Joystick



Compact remote with LED display

Joystick

Product	Description	Type
> Extremity control joystick	Small joystick ideal for chin control, and comes with a headrest and egg switch	Joystick
> MEC joystick	Ideal if you have muscle weakness or fine motor control. It needs very little force	Joystick
> Compact remote with LED display	Perfect if you have a limited range of motion and/or reduced strength	Joystick
> Paediatric compact joystick	Its shallow base makes it a good option for a midline mount	Joystick
> Single switch joystick	Made for people with high muscle tone or uncontrolled movements	Joystick

Sip 'n' puff head array with lip switch

Head controls



ATOM/PROTON head array

Head controls



Proximity switch

Switches



Attendant control unit

Dual control



IDC dual control

Dual control



You can choose a third party control and use it with our intelligent LINX system. It works with a range of control inputs.

Product	Description	Type
> Sip 'n' puff head array, with lip switch	It uses simple sip and puff controls with head movements	Head controls
> ATOM/PROTON head array	There are three proximity sensors mounted in the headrest with in-built Bluetooth	Head controls
> Proximity switch	Ideal if you have a defined range of motion and no force	Switches
> Attendant control unit	It lets your carer use some of the chair functions	Dual controls
> IDC dual control	It means your carer can control some of the chair functions, like the emergency stop	Dual controls



Out and about and faults arise? Our app alerts your provider so they can help fix it

> MyLiNX

MyLiNX is an app that puts a stop to the run of the mill concerns you might have about battery life, and brushes aside nagging worries about something going wrong with your chair. It shows you vital information about your chair's drive time, battery life and overall usage.

* Provider must be signed up to MyLiNX





Making your mind up

Take our chair for a spin

Choosing a powerchair is a big decision and not always an easy one. We're at the end of the phone to help, we'll explain the benefits of each model so you can find the one that's right for you. If getting to a dealer to test out a chair is tricky, let them know - they should be able to visit you instead.

Now you've seen all the AVIVA RX features, it's time to try it for yourself.

The only way you'll really know if you've found the right chair for you is to try it out yourself.

You can 'test drive' all our powerchairs.

Arrange your free demo at your local dealer today.

Unbeatable



Design. Technology. Performance.

dealer info:

Invacare Limited
Pencoed Technology Park - Pencoed
Bridgend CF35 5AQ - United Kingdom
Tel: +44 1 656 776 222
Fax: +44 1656 776 220
E-mail: uk@invacare.com
Sales Order E-mail: ordersuk@invacare.com
www.invacare.co.uk

Invacare Ireland Ltd
Unit 5 - Seatown Business Campus
Seatown Road - SWORDS
County Dublin - Ireland
Tel. +353 1 8107084
Fax +353 1 8107085
Email: Ireland@invacare.com
www.invacare.ie



© 2020 Invacare International GmbH

All rights reserved.

All information quoted is believed to be correct at time of print. Invacare reserves the right to alter product specifications without prior consultation. For more pre-sales information about this wheelchair, please consult www.invacare.eu.com.

For information about typical user description, intended use, adjustments and transportation, please refer to the user guide.
AVIVA RX - CONSUMER BROCHURE - APRIL 2020 - PN 1632196

