



**Indoors to Off-Road.
Freedom in Every Direction.**



SUNRISE
MEDICAL

magic
Mobility[™]
Because the world's not flat

All-Terrain
Powerchairs



Magic 360 Urban



Magic 360 Crossover



Magic 360 Off-Road



MAGIC 360

GO YOUR OWN WAY

AUSTRALIAN MADE

The MAGIC 360 was specifically introduced to take on one of the toughest terrains in the world, Australia. With the Magic 360 you have the freedom to explore wherever you want to, and experience whatever adventure you seek.

It wouldn't be able to do this without having some famous Aussie grit in its DNA, from puncture proof tyres to 800W motors, the Magic 360 certainly packs a punch, and it can take one too.

Designed, manufactured and developed in the heart of Australia, Magic Mobility have brought 25 years of experience with off road wheelchairs to deliver the world's first everyday powerchair with true off-road capability.

AUSTRALIAN
MADE

BUILT TO LAST

PERSONALISED FOR
YOUR LIFESTYLE



magic
Mobility

FITS ANYWHERE

A compact 610 mm wide chassis means the Magic 360 can navigate nearly all indoor environments, from home, to school, to work and back again. Combined with True Mid Wheel Drive technology, it simply gets where other off road chairs can't.

GOES EVERYWHERE

Thanks to 25 years of off-road powerchair expertise, the Magic 360 pushes the boundaries of what an everyday chair can achieve. Technology taken directly from the Magic Mobility product portfolio means the Magic 360 can handle whatever is thrown its way.

PREMIUM DETAIL

Single arm castor forks, magnetised hub covers, crossover wheels and 13 colour choices are a few of the little details that set this chair apart. This obsessive pursuit of perfection has led to the Magic 360. Tailored for the world you live in.



YOUR FEEDBACK

There are powerchairs that work perfectly around your home but lack the ability to perform outdoors, or there are powerchairs that offer genuine off-road performance that are too large, or too cumbersome to function inside.

OUR MISSION

Introduce a product to the market that is just as comfortable around your home as it is outside of it. Offer a never before seen combination of indoor maneuverability and true off road capability

THE OUTCOME

The Magic 360, combining the everyday essentials of indoor manoeuvrability, with genuine off-road performance and the premium eye for detail of Magic Mobility.

FITS IN WITH YOUR LIFE

The world's most versatile compact chair with off-road capability. Tailored to the world you live in, the Magic 360 lets you choose the life you want.

A compact chassis fits seamlessly around your home, work or school environment, giving you true 360° freedom.



TRUE MID WHEEL DRIVE

TRUE mid-wheel-drive is when the powerchair's drive wheels are aligned central to its length. If positioned towards the front or rear, the turning circle is wider. There's also less weight on the drive wheel, reducing traction.

This results in a turning circle of just 1230 mm, allowing you to easily turn on the spot in tight indoor environments such as kitchens, corridors and lifts.



COMPACT BASE WIDTH

The Magic 360 is only 610 mm in width making it more than compact enough to navigate tight indoor environments. Whether that is at home, work, a bar or a restaurant

This compact chassis allows you to perfectly transition from an off-road adventure to an indoor setting, removing the need to change from one chair to another.

The Magic 360 is truly ALL Terrain!





In order to make the chair as narrow as possible, our designers chose to use single sided castor forks as opposed to a more traditional castor fork design. This change saves 17mm of width on each side of the chair for a total saving of 34mm.

HOW DOES IT COMPARE - ALL TERRAIN POWERCHAIRS

One of the largest compromises with all-terrain powerchairs is the size. They work great outdoors but are too large to navigate a compact home. The Magic 360 removes this compromise completely, and offers a massive saving on both size, and indoor manoeuvrability vs traditional products.

	MAGIC 360	MAGIC X8	MAGIC V6 AT
Base Width (mm)	610	710	710
Turning Circle (mm)	1230	2060	1280

HOW DOES IT COMPARE - EVERYDAY POWERCHAIRS

However, the Magic 360 isn't just compact for an off-road chair, it is compact full stop! Compared to most everyday chairs the Magic 360 is right at home, offering premium indoor performance.

	MAGIC 360	Q500 M	Q700 M
Base Width (mm)	610	610	620
Turning Circle (mm)	1230	1260	1260

GETS WHERE OFF ROAD CHAIRS CAN'T

At only 1160 mm long, the Magic 360 can easily navigate a home environment when other off-road chairs are simply too large. As well as space saving options such as a swing away joystick, centre mount footrest and flip back armrests.

LOW SEAT HEIGHT FROM 430 MM

Fit comfortably under tables or when driving into your wheelchair adapted vehicle with the Magic 360's low seat-to-floor height, starting from 430 mm with fixed tilt and up to 480 mm.

COMPACT HOME?

If every centimetre is critical, then the Magic 360 is available to order with Urban wheels instead of the standard Crossover.

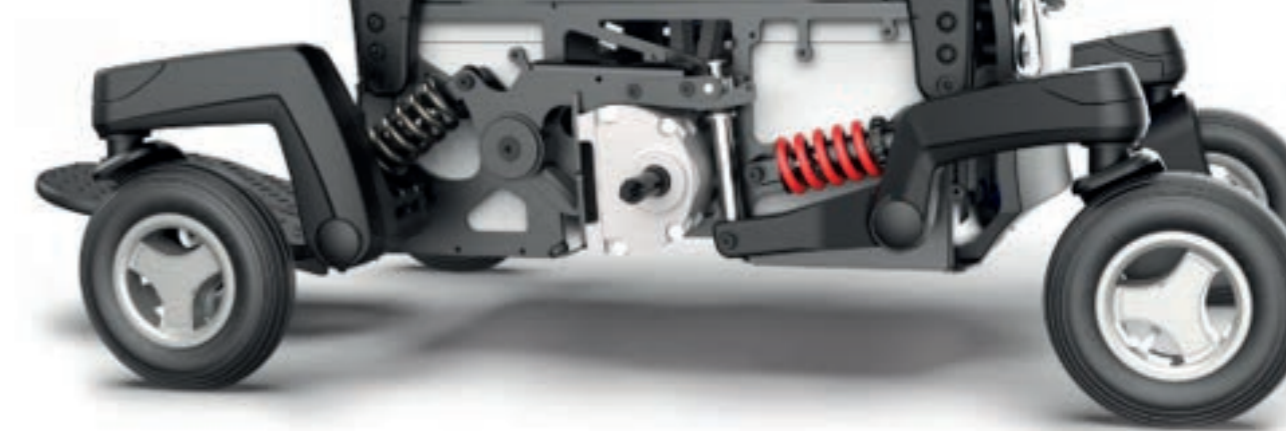
Urban wheels reduce the overall width of the base, making it smaller than many everyday powerchairs.



INDOORS MEETS THE OFF ROAD

For 25 years, Magic Mobility have manufactured, designed and developed All Terrain powerchairs. All of that knowledge has been put into the Magic 360.

The chassis, suspension, motors, drive wheels and batteries were all developed with off-road performance in mind, it is in our DNA.



NO JIGGLE ALL-WHEEL SUSPENSION

Designed to get you where you need to go as comfortably and easily as possible. Adjustable coiled springs sit on each castor arm to dampen every bump in the road and as they all articulate independently, as one climbs over an obstacle the other three keep the chair level and stable. Even at slow speeds!



Step 1: The castor arm raises and forces the drive wheel into the ground, maximising traction



Step 2: As the drive wheel is forced down, the rear castor arm is raised up



Step 3: The chair rocks onto the rear castor with the front castor elevated, allowing obstacle climbing

PREMIUM COMFORT

When driving over any terrain, not just off-road, stability and comfort are key. Soft tyres, independent 4-wheel spring suspension and large castor wheels make the Magic 360 one of the most comfortable rides on the market!

ANTI PITCH TECHNOLOGY

Traditionally when a powerchair comes to a halt on a slope, the stopping motion of the chair will jolt you forwards. That's a problem we've eliminated with Anti-Pitch technology, so you're kept safe and stable in your seat.



READY FOR ANYTHING WITH CROSSOVER WHEELS

Unique to Magic Mobility, Crossover wheels deliver an unrivalled combination of indoor and outdoor performance. Small enough to get around the home, yet designed for off road driving. Overcoming the biggest challenge with standard drive wheels, getting stuck in the mud.

SPREAD THE LOAD

The wide profile of the wheels cover a broader surface area than standard wheels, increasing stability, giving you peace of mind when off-road. It also improves traction which is why the Magic 360 can tackle forests, wet mud and much more.

SUPERIOR CONTROL

Lower in pressure than standard wheels, Crossover wheels offer effortless control over rough terrain. Reducing air pressure increases the surface area contact, improving traction. More traction equals less slipping, meaning you are in control.

CUT THROUGH THE TERRAIN

Covered in large and robust knobby sections, the Crossover wheels easily shed mud and dirt to maintain contact with the ground, to give you as much traction as possible to go where other chairs get stuck.



GO ANYWHERE

If you need to tackle the toughest terrain, we recommend ordering a set of off-road wheels specifically for those occasions. Their extra wide profile and optimised psi gives you greater levels of traction, comfort and control.

They are also easily interchangeable with the Crossover wheels, meaning you can take them off after your adventure and not bring any mud into your home.

LARGE BATTERIES

The last thing you want to worry about on an adventure is the battery running out on your chair, that is why the Magic 360 comes with a 73Ah battery as standard which delivers a range of up to 35 km!

POWERFUL MOTORS

Control and power when you need it! As standard The Magic 360 is powered by 10kph, 4-Pole, high performance 800W motors (vs 450W on Q700M) which deliver 68nm of torque! This level of torque delivers a performance punch when required, specifically during off-road driving on uneven terrain and also allows for the driver to easily overcome obstacles at slower speeds.

SPECIAL ASSISTANCE?

The Magic 360 is so stable, even over rougher terrain, that it can be used in conjunction with chin, head and other special controls. The chair keeps the input device in the required position at all times, meaning no matter how you drive the chair you can experience true 360 freedom.



PREMIUM SEATING KIDS TO ADULT

The Magic 360's seating system is taken directly from our All-Terrain powerchair portfolio. Specifically designed to stand up the challenge of off-road use.

The highly durable seat allows you to go wherever you want to go with absolute peace of mind. Combined with comfortable and supportive MPS seating.



GROWTH FOR KIDS TO ADULTS

The Magic 360 can be customised to your every need with a wide range of built in growth in seat width (12" - 22") and depth (12" - 22"), it is suitable for Kids to Adults.

With a max user weight of 160kg, it can truly accommodate anyone who wants to experience the freedom of the Magic 360.

Available with a wide range of options and accessories to suit both your postural and lifestyle needs



LIE FLAT AND RELAX

For maximum postural support and pressure relief, you can achieve a complete lie flat position on the Magic 360 via a combination of backrest recline and powered elevating legrests.





EVERYDAY SEATING

Our most popular seating choice, the MPS seating system is the perfect combination between postural support, comfort and freedom.

The MPS backrest has integrated lateral supports and the MPS seat cushion has a built in pelvic well, both ensuring a high level of support whilst driving over uneven off road terrain.

Both of these are available in a wide range of sizes, and in either a Fabric or Vinyl wipe down finish.

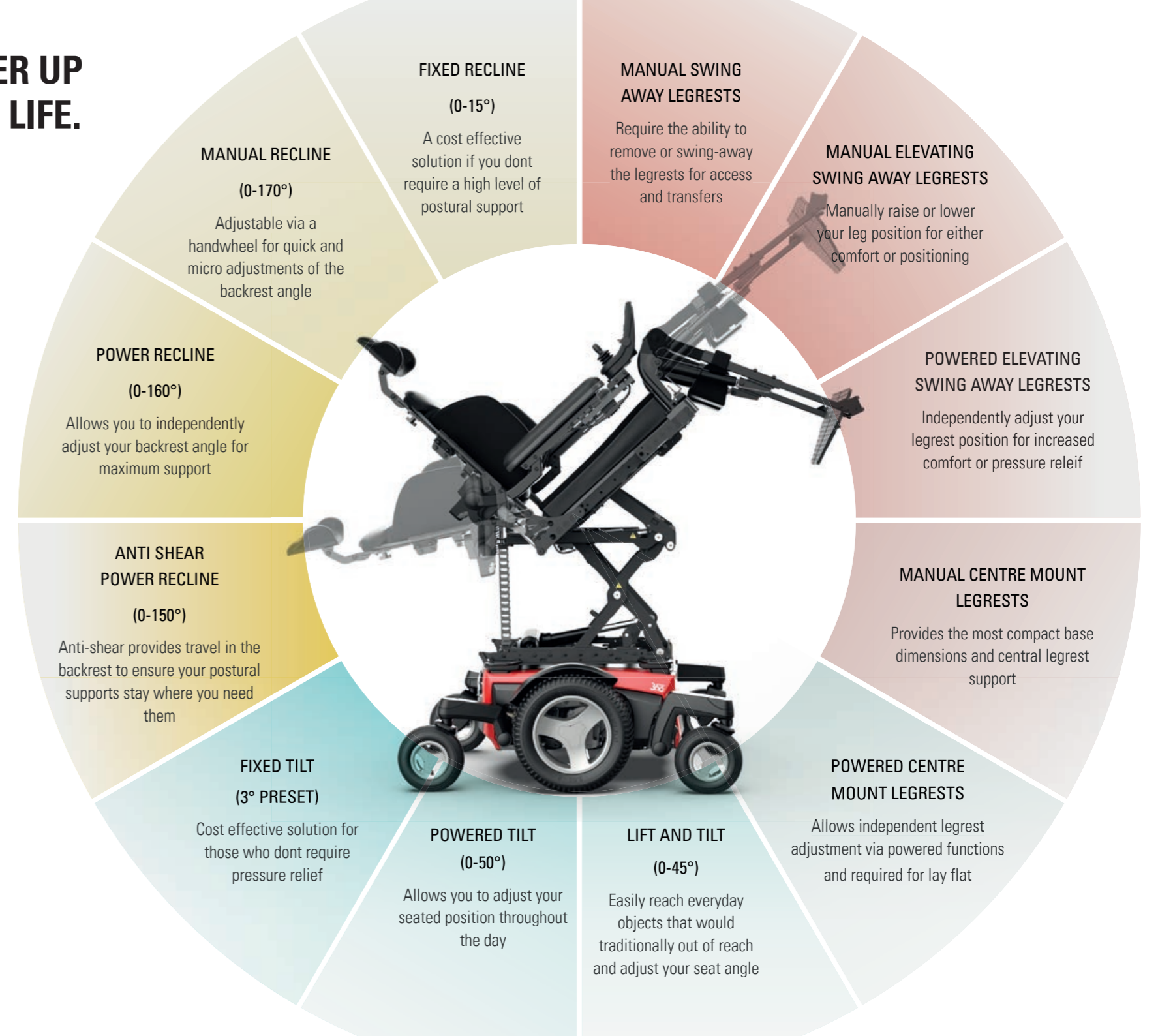


COMPLEX NEEDS?

If you require a more complex seating solution, The Magic 360 offers a range of Rehab backrests, which offer a wide variety of positioning supports.

Alternatively, you can easily interface third party seating via our 1" round backposts and solid seat pan

POWER UP YOUR LIFE.



ELEVATE AND DRIVE WITH C-ME

Say goodbye to waiting around or driving at reduced speed when elevated. With C-Me, you can raise up to 300mm and drive up to 4.8 kph at the same time!

Now you can keep up with your friends at their pace and be eye-level all with a touch of a button (with no need to stop)



RAISING COMFORT WHEN DRIVING ELEVATED

Unlike other powerchairs, our suspension doesn't lock-out when using C-Me. So you get the same smooth and comfortable ride over uneven terrain, even when elevated! Plus, anti-pitch technology will keep you safe and stable on inclines too.

ELEVATE WHILST DRIVING WITH ASSIGNABLE BUTTONS

Fed up of complex joystick movements or having to stop to use your seat lift? With our **PATENTED** assignable buttons, you can change any button (or assign a second, long-press function) to activate C-ME (even when driving).

STOP SWITCH FOR ADDED SAFETY

There's safety in stopping. Our added remote stop switch allows an attendant to stop a powered wheelchair via an RF remote from up to 30 meters away. Operating distance dependent on the environment.



YOUR TRAVELLING COMPANION

We know that not everyone has the Australian outback on their doorstep, so you need to drive to get there. That's why the Magic 360 has been designed for transport.

It's compact chassis allows for access into wheelchair adapted vehicles and no jiggle suspension means it can smoothly transition up ramps.



TRANSPORTABLE

Magic 360 is fully crashed tested and passed with tie downs, Q-Straint and Dahl docking to ISO standard ISPO 7176-19:2008 giving you peace of mind to travel whilst in the chair.

DOCK AND GO

Our Retractable Docking Pin gives you the freedom to drive a car whenever you choose!

You operate the docking pin via your joystick, simply pressing a button to give you ease of movement. The docking pin locks into position, giving you greater confidence.

HOISTING

If you need to hoist your chair into your car via a hoist, please refer to the owners manual for how to safely do this, and we also have a fold down backrest option to make this as easy as possible to do.





YOUR CHAIR. YOUR CHOICE.

The Magic 360 is the world's most versatile compact chair, and has a range of accessories to match. From fishing pole holders and USB chargers to phone, tablet and cup mounts the chair can be configured to your every need.



LIGHT THE WAY

The Magic 360 comes with lights and indicators as standard, letting you continue your adventure wherever you are!

Choose from either mounting them to the base or the seat frame to match your needs.



CHOOSE YOUR COLOUR STYLE

Take charge of your image, and choose the body colour that suits you best. From textured to high gloss. Cool elegance or vibrant shimmer to rugged tones.



HORIZON BLUE

SUNSET RED

VIVID PINK



CAMO FOREST

CARBON FIBRE

FLAMES FURY

DUSK PURPLE

DESERT ORANGE



LUCENT LIME

MIDNIGHT BLACK

RICH GARNET

STORMY SILVER

SUNRISE YELLOW

TECHNICAL DATA

MAGIC 360			
Max. user weight:	160 kg / 350 lb	Turning Circle:	True Mid Wheel Drive
Seat width:	305 mm (12") - 535 mm (21")	Max. safe slope:	6 degrees
Seat depth:	405 mm (16") - 610 mm (24")	Max. kerb climbing:	100 mm (4")
Seat height:	430 mm (17") - 480 mm (19")	Wheel options:	14" Drive wheels (Urban / Crossover / Off Road)
Backrest height:	405 mm (16") - 510 mm (20")	Colour choices:	13 Shroud Colours
Backrest angle:	Fixed (0° - 15°) / Manual (0° - 170°) / Powered (0° - 160°)	Max. range (ISO 7176-4)	35 km (22 miles)
Total width:	610 mm (24") / 635 mm (25") / 650 mm (26")	Wheelchair weight:	From 140kg (base, batteries, rehab seating, centre post legrest, no power functions)
Total length:	983 mm (39") - 1160 mm (46")	Seat tilt:	Tilt (0 - 50°) / Lift and Tilt (300 mm lift, 0 - 45°)
Turning diameter:	1230 mm	Crash tested:	Yes - approved for forward facing transport in a vehicle (ISO 7176-19). Attachment: 4 chair fixing points with 2 double straps rear & 2 single straps front. No anchored belt restraints allowed. The ease of access and manoeuvrability in vehicles depends on the wheelchair size.
Max. speed:	10 kph (6 mph)	Transport without user:	Fix the wheelchair safe in the vehicle (e.g. car or plane)
Battery size:	73 ah	Intended use and environment:	For people with limited mobility, indoor and outdoor use. Wheelchair type class B
Electronics:	R-Net		

Now that you've read all about MAGIC 360, why not arrange a free demonstration and experience it for yourself?

Sunrise Medical cares about your safety. Please read your owner's manual for safe operating instructions and maintenance guidelines.

In line with our policy of continual product improvement, Sunrise Medical reserves the right to make changes at any time, and without notice. For the latest information, please visit www.sunrisemedical.co.uk

If you are visually impaired, this document can be viewed in PDF format at www.sunrisemedical.co.uk

Thorns Road, Brierley Hill, West Midlands, DY5 2LD
 Tel.: +44 (0) 845 605 66 88
 E-Mail: enquires@sunmed.co.uk
www.sunrisemedical.co.uk

