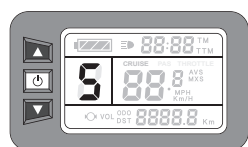




Increased battery range with all Trirides, with up to a 40% increase.

Improved power delivery and traction, with the new EcoDrive you can choose from 5 different modes, selected from the Triride display.

+40% AUTONOMY



■ How to use Eco Drive

The 5 modes available with the Eco Drive system can be selected directly from the display using the controls ▲ ▼ to switch from 1 to 5 and from 5 to 1.

The 5 modes of the Eco Drive system are described in the following table. The increase in autonomy will be more relevant using the moderate functions (1 - 2 - 3).

1	ECO	for maximum energy savings	20% of the maximum power. Battery range increase + 40% Maximum gradient ² 8%
2	URBAN	smooth drive for urban environments	30% of the maximum power. Battery range increase + 30% Maximum gradient ² 10%
3	TOUR	torque and power with ease for most situations	50% of the maximum power. Battery range increase + 20% Maximum gradient ² 15%
4	SPEEDY	to face the paths more demanding	75% of the maximum power. Battery range increase + 5% Maximum gradient ² 20%
5	TURBO	for the most demanding routes and situations	100% of the maximum power. Battery range increase + 0% Maximum gradient ² more than 20%

The Normal/Sport function, (that allows greater acceleration and more intense electronic braking) remains unchanged. Reverse and cruise control (if available) operate automatically at maximum power.

The 5 display functions do not determine the speed levels but correspond to the level of power supplied, therefore to the possibility of improving the autonomy performance.

¹The Eco Drive system is available as an option. The EcoDrive system can also be implemented on existing Trirides from 2016.

²It is recommended not to go uphill or downhill with slopes greater than those indicated in the User Manual. The actual slope that can be overcome depends on the Triride model used, the driver's ability, the type of road surface, the user weight, the wheelchair model, the state of wear of the front tire.