



built **4** me

Standard Customisations Catalogue

May 2014



built **4** me

Over the years, we've created customisations that have been ordered more than once and may be of interest to others. Because of this, we've created this catalogue to showcase these options that are ready to order.

Please remember, this catalogue only shows a few possibilities that are available through Built-4-Me - your choices are virtually unlimited! If you don't see what you're looking for, just give our Built-4-Me team a call and we can meet your unique needs.

(01384 421 521

How to Order

Every Built-4-Me is manufactured and customised to the clients individual requirements - that's why it's so important we get the right information to fully understand your request and deliver a product to meet their needs.

1

Complete the **regular product order form**, selecting all required options.



2

On the Built-4-Me order form, provide details of your Built-4-Me request. Include as much detail as possible about the solution you require. Remember to include:

- A detailed explanation of your request
- Sketches/drawings with dimensions (if applicable)
- Part numbers for Sunrise Medical or third party parts/accessories
- Built-4-Me item number (if your request is listed in this catalogue)
- Any other helpful information

Remember - we need as much information as possible. Including more information will speed up the process and reduce queries which can extend the quotation lead time.



3

Once you've fully completed the regular product and Built-4-Me order form, send it to the Built-4-Me team by fax on **01384 421 975** or email at built4me@sunmed.co.uk



4

Remember to always leave your contact details so if we have any queries our Built-4-Me team can contact you.

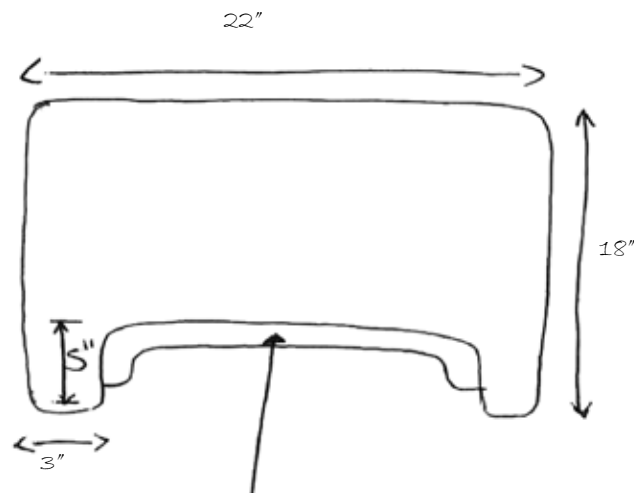
Example Order Form

Not sure of the level of detail to include in your order form?
Here is a typical example of how an order form for a special tray with buddy-buttons would look like.

built4me

SPECIAL BUILD DETAILS

Special tray FMG-PK03-274401



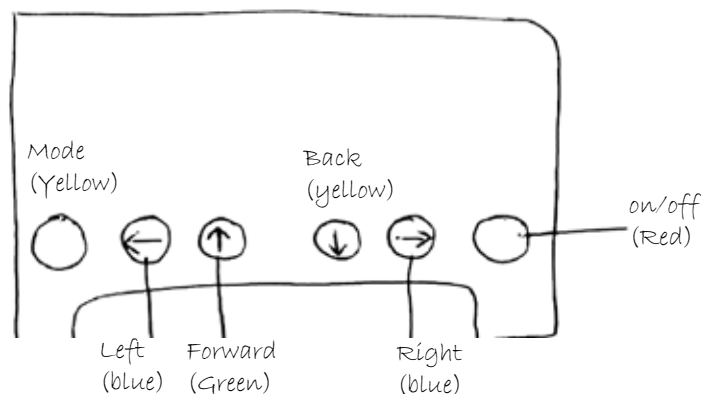
2) Extra padding to protect the client

3) Client to drive with buddy buttons

Omit joysticks

Buttons mounted in the tray

Tray mount left-hand



What happens next?

Once we've received your RFQ, the Built-4-Me team will review your request and build your quotation. We're committed to offering you and your client a responsive service and a cost effective solution. We aim to:

- Acknowledge your Request for Quotation (RFQ) within 24 hours of receipt.
- Notify you within 24 hours of any queries relating to your RFQ.
- Supply you with written quotations for simple customisations within 48 hours of receipt of your complete and query-free RFQ.
- Supply you with new pricing for the customisation in one clear, standardised format (regardless of product or manufacturing site).
- Issue you with sales order acknowledgements within 24 hours once your order has been entered onto our system.



We only proceed with your order once you've reviewed our quotation and have agreed to proceed to a sale. It is important that you check your quotation as soon as possible to reduce any delay in production and ensure that you're happy with the customisation.

Lead Times for Customisations:

Low	When the request has been done before (or is considered to be a simple request)	Regular product lead time + 2 DAYS
Moderate	If the request has not been done before, but has a similarity to an existing one (e.g. same adaption but for a different product)	Regular product lead time + 4 DAYS
High	If the request has never been done before and may require complex design work or acquisition of externally supplied parts (that may result in a longer lead time)	Regular product lead time + 6 DAYS
Extreme	If re-assessments may be necessary or very complex design/ manufacturing work needs to be done	Determined specifically for each request



Need help?

Our Built-4-Me team can support you with processing your order and handling your queries.



Phil Smith

Built-4-Me Engineer

(01384 421 643

phil.smith@sunmed.co.uk



Amy Pattison

Built-4-Me Administration & Technical Support

(01384 421 521

amy.pattison@sunmed.co.uk



Jeremy Fletcher

Regulatory & Special Builds Manager

(01384 421 672

jeremy.fletcher@sunmed.co.uk



Angela Brookes

Built-4-Me Administration & Technical Support

(01384 421 521

angela.brookes@sunmed.co.uk

General Enquiries

(01384 421 521

☎ 01384 421 975

built4me@sunmed.co.uk

Table of Contents

BACK

25cm - 30cm Back Height (with Fold Down Push Handles)	11
25cm - 30cm Back Height (with Height Adjustable Push Handles)	11
Angle Adjustable Back with Moving Aluminium Sideguard	11
Angle Adjustable Back with Moving Aluminium Sideguard & Armpad	12
Back Height (45cm)	12
Back Upholstery (with Pocket)	12
Back with Recline (Operated by User)	13
Backrest Cross Bar (Special Dimensions)	13
Backrest Cross Bar under the Back Upholstery	13
Continuous Push Handle (Broadened)	14
Continuous Push Handle (Straight)	14
Custom Back Upholstery	14
Drum Brake	15
Drum Brake	15
Extended Push Handles	15
Fixed Back Mounted (with Strap-on Handles)	16
Headrest	16
Headrest	16
Headrest for Simo Seat Shell	17
Height Adjustable Push Angles and Angle Adjustable Back	17
Height Adjustable Push Handles (60cm Length)	17
Height Adjustable Push Handles (Angled Down)	18
JAY Comfort Back (Adjustable Straps)	18
JAY Comfort Back (Fixed Straps)	18
JAY Comfort Back Contour (Adjustable Straps, Active)	19
JAY Comfort Back Contour (Adjustable Straps, Passive)	19
JAY J3 Fixation on JAY Comfort Back	19
Knee Lever Brake Locking Close (Lockable)	20
Knee Lever Brake Locking Release (Lockable)	20
One Arm Brake (Right)	20
Quick Release Back Posts on Hot Seat	21
Reinforced Back Posts at Base	21
Reinforced Back Tube	21
Trunk Support Mounted on the Back Tubes	22
Brake Operated by Assistant	22
Drum Brake	22
Enlarged Brake Lever Extension (Detachable)	23
Knee Lever Brake (with Grade Aid)	23
One Arm Brake (Left)	23
One Arm Brake (Right)	24
One Arm Safari Wheel Lock (Left)	24
One Arm Safari Wheel Lock (Right)	24
One-Arm Brake (Left)	25

BRAKE

CASTOR

CONTROLS / ELECTRONICS

FOOTREST

8" Solid Castor (200mm x 50mm) 25

9" Pneumatic Castor (200mm x 50mm) 25

Castor Fork with Suspension (Hard) 26

Castor Fork with Suspension (Medium) 26

Castor Fork with Suspension (Soft) 26

Attendant Hand Support for Jive 27

Huka Flip-Over Controller with Coloured Display (Including Tray) 27

Huka Powered Flip Up Controller (Including Tray) 27

Joystick Mounting (Both Sides)..... 28

Mimo Joystick Fixation 28

Piko Button 28

Powered Swing-Away Arm Chin Control (Overhead) 29

Rear View Camera (Wireless)..... 29

Switch It Foot Control 29

Articulating Legrests on Zippie Seating System 30

Divided Footboard (with Interlock) 30

Divided Footboard (with Swing Mechanism Interlock) 30

Divided Footplate 31

Divided Footplate (for Short Lower Leg Length)..... 31

Elevating Footrest (with Platform Footplate)..... 31

Elevating Legrest, Right: Standard, Left: Rubix² Version 32

Elevating Legrests (RubiX² Version)..... 32

Elevating Legrests, Left: Standard, Right: RubiX² Version 32

Flip-up Footboard (with Stabilising Bar)..... 33

Flip-up Footplate (with Interlock & Stabiliser Bar)..... 33

Flip-up Swing-Away Footplate (with Interlock & Stabiliser Bar) 33

Flip-up Swing-Away Footplate (with Stabiliser Bar) 34

Footplate (Customised Size) 34

Footrest ALR (Pair) 34

Footrest ALR LH RH (Standard)..... 35

Footrest ALR RH LH (Standard)..... 35

Heel Cap..... 35

Knee Support (Swing-Away)..... 36

Lightweight Footrest (Flip-up) with Stabilising Bar 36

Longer Lower Leg Length 36

Lower Leg Length Smaller than 17cm 37

Platform Footplate (for Short Lower Leg Length) 37

Platform Footrest 37

Powered Elevating Legrests on Zippie Seating System 38

Pro-Adjust Centre Mounted Powered Legrests 38

Single Footboard Interlock & Swing-Away Mechanism (Seat Width Greater than 46cm)..... 38

Single Footboard Interlock (Seat Width Greater than 48cm) 39

Single Footboard Interlock (Seat Width Less than 48cm) 39

Single Footboard Interlock and Swing-Away Mechanism (Seat Width Less than 50cm) 39

Stabiliser Bar on Footrest (Custom)..... 40

Stump Pad..... 40

Swing-Away Footrest with Continuous Footplate..... 40

Width Adjustable Footboard 41

Y-Style Foot Bar 41

FRAME

50° Tilt	41
Abduction Frame (Variable)	42
Custom Colour (From Existing Available Colours)	42
Custom Colour (Not Already Available on Another Product)	42
Dahl Docking System for Salsa M.....	43
Dahl Docking System for Salsa R.....	43
F16 Power Add-on for 48cm Seat Width.....	43
Fixed Abduction Frame	44
Foil Wrapped Shroud	44
Frame Cut from below to Castor Link Tube	44
Seat Depth (50cm)	45
Seat Depth Shorter than Frame Length.....	45
Seat Width (28cm - 30cm).....	45
Wheel Base Extension (with One Axle).....	46

OPTIONS

Gear Shifter and Brake (on Second Handle).....	46
Special V-Crank (Special Size).....	46
Welded Crank Housing (with Special Measurements)	47
Anti-Theft Bars	47
Extended Lap Belt Length (195cm)	47
Infusion Stand.....	48
i-Pad Bag on Sideguard	48
Mounting Bracket for Oxygen Bottle.....	48
Mounting of Medical Devices	49
Tray Table (with Customised Dimensions).....	49
Tray Table Centre Mount (for R-net Controls).....	49
Tray Table Centre Mounted (for VR2 Controls).....	50

REAR WHEEL

6° Wheel Camber	50
22" Tyre Marathon Evolution Plus.....	50
24" Solid Tyre for One Arm Drive	51
26" Solid Tyres.....	51
26" Tyre (Marathon Evolution Plus).....	51
26" Wheel.....	52
Assembly Kit (Power 105).....	52
Assembly Kit (Power 106).....	52
Custom Rear Tyres	53
Decon Spider Wheel.....	53
Handrim (26") Supergrip.....	53
Handrim (Extra Close Mount)	54
Handrim (Stainless Steel 24" without Tabs)	54
Handrim (Supergrip 24" without Tabs).....	54
Handrim (Supergrip).....	55
Knobbly Handrim.....	55
Max Grip Handrim	55
One Arm Drive	56
One Arm Drive	56
One Arm Drive	56
One Arm Drive (24" Wheel).....	57
One Arm Drive (24" Wheels with Left-Hand One-Arm Brake).....	57
One Arm Drive (24" Wheels with Right-Hand One-Arm Brake).....	57

SEAT / CROSS BRACE

SIDEGUARD

One Arm Drive (for Seat Width 24cm and 26cm).....	58
One Arm Drive (for Seat Width 38cm).....	58
One Arm Drive (for Seat Width 41cm - 43cm).....	58
One Arm Drive (for Seat Width 41cm - 43cm).....	59
One Arm Drive (with 6° Wheel Camber).....	59
Proton Rear Wheel (20").....	59
Quad Quick Release Axle.....	60
Rear Wheel (22").....	60
Rear Wheel (26").....	60
Revolving Wheel with Handrim and One-Arm Drive.....	61
Spinergy Wheel.....	61
Stainless Steel Handrim.....	61
Titanium Handrim.....	62
Universal Rear Wheel (20").....	62
20" Rear Wheels.....	62
Additional Pocket under the Seat Upholstery.....	63
Fixed Backrest and Seat (with Abduction Wedge).....	63
Fixed Seat.....	63
Front Seat Height (Enlarged).....	64
Hot Seat on Quickie Jive (Maximum Payload 140kg).....	64
JAY Comfort Seat Place 2cm.....	64
JAY Optimum Comfort Cushion.....	65
JAY Standard Comfort Seating, Different Sizes (Seat Width, Seat Depth).....	65
Lower Seat Height.....	65
Seat Cushion (Special Dimensions).....	66
Seat Depth (20cm - 22cm).....	66
Seat Depth (Less than 30cm).....	66
Seat Depth Adjustment (Independent of Frame).....	67
Seat Height (41.5cm).....	67
Welded Front Castor Housing for Custom Seat Height.....	67
Welded Front Castor Housing for Custom Seat Height.....	68
Zippie Seat (Mounted on Quickie Jive).....	68
Armpad (with Customised Dimensions).....	68
Armrest (Swing-Away).....	69
Coloured Metal Parts on Armrests.....	69
Desk Sideguard.....	69
Enlarged Arm Pad with Aluminium Sideguards (Easy Style).....	70
Flip-up Armrests.....	70
Padded Armrest (Angle Adjustable).....	70
Padded Armrest (Angle Adjustable).....	71
Padded Armrest (Angle Adjustable).....	71
Padded Armrest with Angle Adjustable 90° Back.....	71
Plastic Sideguard (with Clothes Protector).....	72
Sideguards Made to Suit.....	72
Standard Sideguard (Aluminium).....	72
Standard Sideguard (with Armpad and Clothes Protector).....	73
Standard Sideguard (with Armpad).....	73
Standard Sideguard (with Clothes Protector).....	73
Swing-Away and Detachable Armrest Tubes.....	74



25cm - 30cm Back Height (with Fold Down Push Handles)

FMG-MD04-2648-01

Not compatible with:
Rear seat height that's smaller than 44cm (with 24" wheels).

Available On:

- Quickie Helium
- Quickie Neon FF
- Quickie Neon SA
- Quickie Xenon SA

Back



25cm - 30cm Back Height (with Height Adjustable Push Handles)

FMG-MD04-2648-02

Not compatible with:
Rear seat height that's smaller than 44cm (with 24" wheels).

Available On:

- Quickie Helium
- Quickie Neon FF
- Quickie Neon SA
- Quickie Xenon SA

Back



Angle Adjustable Back with Moving Aluminium Sideguard

FMG-MD06-1388-01

The sideguard will be mounted on the back and will move with the back as the back angle is adjusted.

Not compatible with:
Seat depth less than 30cm. Seat depth enlargement (5cm). Short back frame. Cold protection. Skirtguard. Safari wheel lock. Mud guard (fender that covers the complete wheel). Standard back upholstery. Transit brackets.

Available On:

- Zippie Youngster 3

Back



Angle Adjustable Back with Moving Aluminium Sideguard & Armpad

FMG-MD06-1388-02

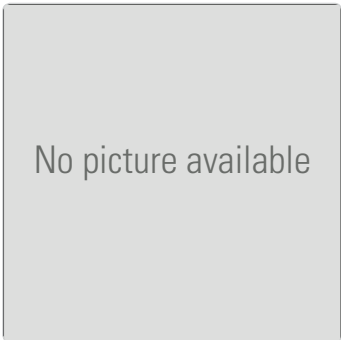
The sideguard will be mounted on the back and will move with the back as the back angle is adjusted.

Not compatible with:

Seat depth less than 30cm. Seat depth enlargement (5cm). Short back frame. Cold protection. Skirtguard. Safari wheel lock. Mud guard (fender that covers the complete wheel). Standard back upholstery. Transit brackets.

Available On:

- Zippie Youngster 3

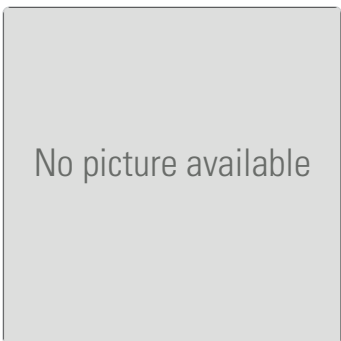


Back Height (45cm)

FMG-MD04-0318-01

Available On:

- Zippie Youngster 3



Back Upholstery (with Pocket)

FMG-MD01-0862-01

The pocket will have the same measurements as the back upholstery.

Not compatible with:

Only possible with the standard back upholstery and the adjustable nylon back upholstery.

Available On:

- Quickie EasyMax FF
- Quickie EasyMax SA
- Quickie Helium
- Quickie Life FF
- Quickie Life SA
- Quickie Neon FF
- Quickie Neon SA
- Zippie Simba
- Quickie Xenon SA



Back with Recline (Operated by User)

FMG-MD06-0919-02

The control lever is mounted on the sideguard or on the side of the frame and is only possible with an angle adjustable back (and gas compression spring). This customisation is only available with one anti-tip tube.

Available On:

- Breezy RubiX²

Back



Backrest Cross Bar (Special Dimensions)

FMG-MD05-1297-01

Detailed user measurements are required before ordering.

Available On:

- Quickie Helium

Back



Backrest Cross Bar under the Back Upholstery

FMG-MD05-3148-01

This customisation is only available on the Helium Pro (with fixed-welded backrest).

Not compatible with:

Back height of more than 37.5cm. Angle adjustable back.

Available On:

- Quickie Helium

Back

Back



Continuous Push Handle (Broadened)

FMG-MD06-1324-02

Recommended for narrow seat widths. This is only possible with height adjustable push handles. The wheelchair is only foldable when the push handles are removed.

Available On:

- Quickie EasyMax FF
- Quickie EasyMax SA
- Quickie Helium
- Quickie Life FF
- Quickie Life SA
- Quickie Neon FF
- Quickie Neon SA
- Zippie Simba
- Quickie Xenon SA
- Zippie Youngster 3

Back



Continuous Push Handle (Straight)

FMG-MD06-1324-01

This is only possible with height adjustable push handles. The wheelchair is only foldable when the push handles are removed.

Available On:

- Quickie EasyMax FF
- Quickie EasyMax SA
- Quickie Helium
- Quickie Life FF
- Quickie Life SA
- Quickie Neon FF
- Quickie Neon SA
- Zippie Simba
- Quickie Xenon SA
- Zippie Youngster 3

Back



Custom Back Upholstery

FMG-MD01-1153-01

Please consult with the Built-4-Me team in regards to feasibility. The costs are subject to your request.

Available On:

- Quickie EasyMax FF
- Quickie EasyMax SA
- Quickie Helium
- Quickie Life FF
- Quickie Life SA
- Quickie Neon FF
- Quickie Neon SA
- Zippie Simba
- Quickie Xenon SA
- Zippie Youngster 3



Drum Brake

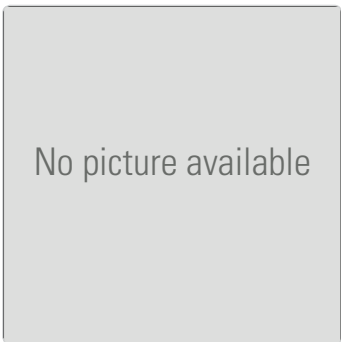
FMG-MH02-2058-01

The drum brake is only possible with the universal wheel.

Available On:

- Quickie EasyMax FF
- Quickie EasyMax SA

Back



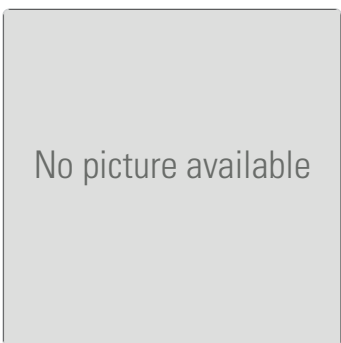
Drum Brake

FMG-MH02-2984-01

Available On:

- Quickie Helium

Back



Extended Push Handles

FMG-MD06-0315-01

This customisation is only available with height adjustable push handles.

Not compatible with:

Extension of more than 15cm.

Available On:

- Quickie EasyMax FF
- Quickie EasyMax SA
- Quickie Helium
- Quickie Life FF
- Quickie Life SA
- Quickie Neon FF
- Quickie Neon SA
- Zippie Simba
- Quickie Xenon SA
- Zippie Youngster 3

Back

Back



Fixed Back Mounted (with Strap-on Handles)

FMG-MD02-1322-01

This is a padded solid back (4025), as used on the Easy 200/300. Please use item code FMG-MD02-1322-01 for the fixed seat.

Available On:

- Quickie EasyMax FF
- Quickie EasyMax SA
- Quickie Helium
- Quickie Life FF
- Quickie Life SA
- Breezy RubiX²
- Zippie Simba
- Quickie Xenon SA
- Zippie Youngster 3

Back



Headrest

FMG-MD10-2112-01

Not compatible with:
Fold-down push handles.

Available On:

- Quickie EasyMax FF
- Quickie EasyMax SA
- Quickie Life FF
- Quickie Life SA

Back



Headrest

FMG-MD10-2398-01

The headrest holder will be welded onto the backrest tube.

Not compatible with:
Only possible with the standard back.

Available On:

- Quickie Helium



Headrest for Simo Seat Shell

FMG-MD10-3078-01

The headrest will be mounted on the Simo back.

Available On:

- Zippie Simba
- Zippie Youngster 3

Back



Height Adjustable Push Angles and Angle Adjustable Back

FMG-MD06-2393-01

The height adjustable push handles will be mounted on the backrest tubes.

Available On:

- Breezy RubiX²

Back



Height Adjustable Push Handles (60cm Length)

FMG-MD06-0833-01

Only available with height adjustable push handles.

Available On:

- Quickie EasyMax FF
- Quickie EasyMax SA
- Quickie Helium
- Quickie Life FF
- Quickie Life SA
- Quickie Neon FF
- Quickie Neon SA
- Quickie Xenon SA
- Zippie Youngster 3

Back

Back



Height Adjustable Push Handles (Angled Down)

FMG-MD06-1235-01

Only available with height adjustable push handles.

Available On:

- Quickie EasyMax FF
- Quickie EasyMax SA
- Quickie Helium
- Quickie Life FF
- Quickie Life SA
- Quickie Neon FF
- Quickie Neon SA
- Zippie Simba
- Quickie Xenon SA

Back



JAY Comfort Back (Adjustable Straps)

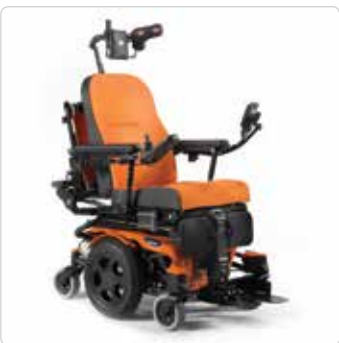
FMG-PD09-2789-02

JIV040003: Standard Velour (Shallow contour) - tension adj. straps different sizes, different colours or different materials.

Available On:

- Quickie JIVE F
- Quickie JIVE M
- Quickie JIVE R
- Zippie Salsa M
- Zippie Salsa R
- Quickie Salsa M
- Quickie Salsa R

Back



JAY Comfort Back (Fixed Straps)

FMG-PD09-2789-03

JIV040002: Standard Velour - Vertical Elastic Straps in different sizes, different colours or different materials.

Available On:

- Quickie JIVE F
- Quickie JIVE M
- Quickie JIVE R
- Zippie Salsa M
- Zippie Salsa R
- Quickie Salsa M
- Quickie Salsa R



JAY Comfort Back Contour (Adjustable Straps, Active)

FMG-PD09-2789-04

JIV040004 Deep Contour - Horizontal Adjustable Straps (Active) in different sizes, different colours or different materials.

Available On:

- Quickie JIVE F
- Quickie JIVE M
- Quickie JIVE R
- Zippie Salsa M
- Zippie Salsa R
- Quickie Salsa M
- Quickie Salsa R

Back



JAY Comfort Back Contour (Adjustable Straps, Passive)

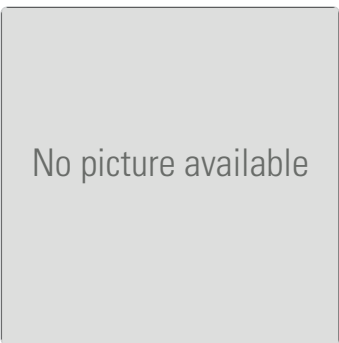
FMG-PD09-2789-05

JIV040005: Deep Contour - Horizontal Adjustable Straps (Passive) in different sizes, different colours or different materials.

Available On:

- Quickie JIVE F
- Quickie JIVE M
- Quickie JIVE R
- Zippie Salsa M
- Zippie Salsa R
- Quickie Salsa M
- Quickie Salsa R

Back



JAY J3 Fixation on JAY Comfort Back

FMG-PD05-2789-01

JAY J3 Adaption for JAY Comfort Backrests.

Available On:

- Quickie JIVE F
- Quickie JIVE M
- Quickie JIVE R

Back

Back



Knee Lever Brake Locking Close (Lockable)

FMG-MH01-1545-02

The brake is secured with a split-pin, so it restricts the user's ability to release the parking brake.

Not compatible with:

Only possible with drum brakes and knee lever brakes.

Available On:

- Quickie EasyMax FF
- Quickie EasyMax SA
- Quickie Life FF
- Quickie Life SA
- Quickie Neon FF
- Quickie Neon SA
- Breezy RubiX²
- Zippie Simba
- Quickie Xenon SA
- Zippie Youngster 3

Back



Knee Lever Brake Locking Release (Lockable)

FMG-MH01-1545-01

The brake is secured with a split-pin, so it restricts the user's ability to release the parking brake.

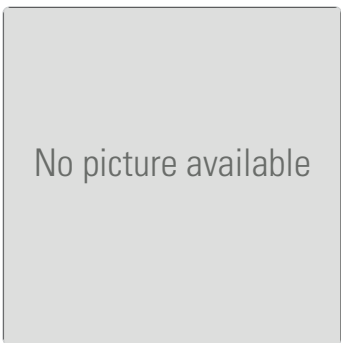
Not compatible with:

Only possible with knee lever brakes.

Available On:

- Quickie EasyMax FF
- Quickie EasyMax SA
- Quickie Helium
- Quickie Life FF
- Quickie Life SA
- Quickie Neon FF
- Quickie Neon SA
- Breezy RubiX²
- Zippie Simba
- Quickie Xenon SA
- Zippie Youngster 3

Back



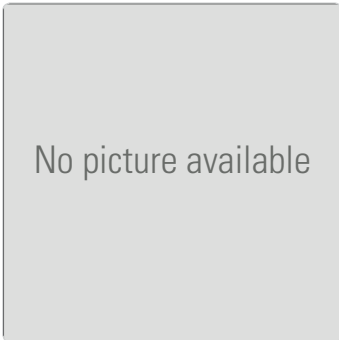
One Arm Brake (Right)

FMG-MH01-3063-01

Depending on the options that are chosen for the wheelchair, a special bracket may be needed to mount the one-arm-drive.

Available On:

- Quickie EasyMax FF
- Quickie EasyMax SA
- Quickie Life FF
- Quickie Life SA
- Zippie Youngster 3



Quick Release Back Posts on Hot Seat

B4M-PC01-BP01

Available On:

- Quickie Salsa M

Back



Reinforced Back Posts at Base

B4M-MC01-BP01

Available On:

- Lomax Uni 8
- Lomax Uni 9

Back



Reinforced Back Tube

FMG-MD06-1772-01

The back tubes will be reinforced with a stainless steel inlay.

Available On:

- Quickie EasyMax FF
- Quickie EasyMax SA
- Quickie Helium
- Quickie Life FF
- Quickie Life SA
- Quickie Neon FF
- Quickie Neon SA
- Zippie Simba
- Quickie Xenon SA
- Zippie Youngster 3

Back



Trunk Support Mounted on the Back Tubes

FMG-MD08-1485-01

The pads are mounted with clamps on the back tubes (and are removable).

Not compatible with:

Customisation is only possible with adjustable back upholstery. Please consult with the Built-4-Me department if you require a small back or seat height. The lightweight backrest is not possible.

Available On:

- Quickie EasyMax FF
- Quickie EasyMax SA
- Quickie Helium
- Quickie Helix 2
- Quickie Life FF
- Quickie Life SA
- Quickie Neon FF
- Quickie Neon SA
- Breezy RubiX²
- Zippie Simba
- Quickie Xenon SA
- Zippie Youngster 3



Brake Operated by Assistant

FMG-MH01-0880-01

Not compatible with:

Drum brake. Solid tyres. Maximum user weight 125kg.

Available On:

- Quickie EasyMax FF
- Quickie EasyMax SA
- Quickie Life FF
- Quickie Life SA
- Quickie Neon SA
- Breezy RubiX²
- Zippie Youngster 3



Drum Brake

FMG-MH02-2952-01

This customisation is only possible with the cross-spoked universal wheel.

Not compatible with:

Without push handles. Short push handles. Fold down push handles.

Available On:

- Zippie Simba



Enlarged Brake Lever Extension (Detachable)

FMG-MH01-0842-01

The length of the brake lever extension is required before ordering.

Not compatible with:

Maximum length is 30cm. The brake lever extension is only to plug in the knee lever brake. Only possible for the knee lever brake.

Available On:

- Quickie EasyMax FF
- Quickie EasyMax SA
- Quickie Helium
- Quickie Life FF
- Quickie Life SA
- Quickie Neon FF
- Quickie Neon SA
- Breezy RubiX²
- Zippie Simba
- Quickie Xenon SA
- Zippie Youngster 3



Knee Lever Brake (with Grade Aid)

FMG-MH01-2421-02

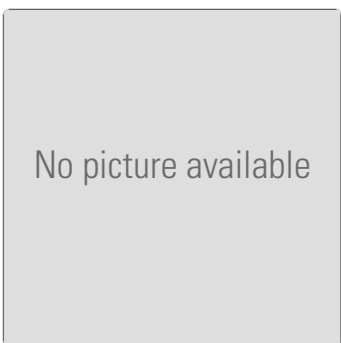
If it's possible to mount a standard knee lever brake then it's also possible to mount a knee lever brake with grade aid.

Not compatible with:

Solid tyres.

Available On:

- Quickie EasyMax FF
- Quickie EasyMax SA
- Quickie Helium
- Quickie Life FF
- Quickie Life SA
- Breezy RubiX²
- Zippie Simba
- Quickie Xenon SA
- Zippie Youngster 3



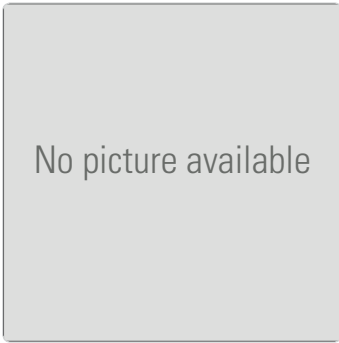
One Arm Brake (Left)

FMG-MH01-2964-02

Includes the brake lever extension.

Available On:

- Quickie Helium
- Quickie Xenon SA



One Arm Brake (Right)

FMG-MH01-2964-01

Includes the brake lever extension.

Available On:

- Quickie Helium
- Quickie Xenon SA



One Arm Safari Wheel Lock (Left)

FMG-MH01-2991-02

This customisation is only possible in combination with the Simba safari brake. Both brake cables will need to be mounted on one brake lever.

Available On:

- Zippie Simba



One Arm Safari Wheel Lock (Right)

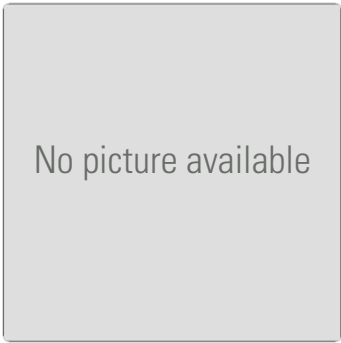
FMG-MH01-2991-01

This customisation is only possible in combination with the Simba safari brake. Both brake cables will need to be mounted on one brake lever.

Available On:

- Zippie Simba

Not compatible with:
Seat widths larger than 38cm.



One-Arm Brake (Left)

FMG-MH01-3063-02

When certain options are fitted to the wheelchair, a special bracket will need to be mounted.

Available On:

- Quickie EasyMax FF
- Quickie EasyMax SA
- Quickie Life FF
- Quickie Life SA
- Zippie Youngster 3

Brake



8" Solid Castor (200mm x 50mm)

FMG-MG01-2272-01

Not compatible with:

Seat depths smaller than 42cm. Only possible with a front seat height of 50cm and 52cm.

Available On:

- Quickie EasyMax SA
- Quickie Life FF

Castor



9" Pneumatic Castor (200mm x 50mm)

FMG-MG01-2272-02

Not compatible with:

Seat depths smaller than 42cm. Only possible with a front seat height of 50cm and 52cm.

Available On:

- Quickie EasyMax SA
- Quickie Life FF
- Breezy Relax²

Castor

Castor



Castor Fork with Suspension (Hard)

FMG-MG02-2552-03

The front seat height will need to be confirmed with the Built-4-Me team before ordering. The size of the frog leg fork is approx. 138mm. This item code is only for a user weight of up to 125kg.

Not compatible with:
Castor sizes larger than 5". Front castor housing that's height adjustable (e.g. Argon²). Fork with colour.

- Available On:
- Quickie EasyMax FF
 - Quickie Helium
 - Quickie Neon FF
 - Quickie Neon SA
 - Zippie Simba
 - Zippie Youngster 3

Castor



Castor Fork with Suspension (Medium)

FMG-MG02-2552-02

The front seat height will need to be confirmed with the Built-4-Me team before ordering. The size of the frog leg fork is approx. 138mm. This item code is only for a user weight of up to 87kg.

Not compatible with:
Castor sizes larger than 5". Front castor housing that's height adjustable (e.g. Argon²). Fork with colour.

- Available On:
- Quickie EasyMax FF
 - Quickie Helium
 - Quickie Neon FF
 - Quickie Neon SA
 - Zippie Simba
 - Zippie Youngster 3

Castor



Castor Fork with Suspension (Soft)

FMG-MG02-2552-01

The front seat height will need to be confirmed with the Built-4-Me team before ordering. The size of the frog leg fork is approx. 138mm. This item code is only for a user weight of up to 46kg.

Not compatible with:
Castor sizes larger than 5". Front castor housing that's height adjustable (e.g. Argon²). Fork with colour.

- Available On:
- Quickie EasyMax FF
 - Quickie Helium
 - Quickie Neon FF
 - Quickie Neon SA
 - Zippie Simba
 - Zippie Youngster 3



Attendant Hand Support for JIVE

FMG-PI01-2886-03

The hand support for the attendant control is depth adjustable and can be swung-away. So when it's not in use, you can swing it away.

Available On:

- Quickie JIVE F
- Quickie JIVE M
- Quickie JIVE R



Huka Flip-Over Controller with Coloured Display (Including Tray)

FMG-PI03-3065-02

HUKA centre mounted R-net flip-over joystick mount (with coloured display). The tray table is included (please remember to include your tray measurements).

Available On:

- Quickie JIVE F
- Quickie JIVE M
- Quickie JIVE R
- Zippie Salsa M
- Zippie Salsa R
- Quickie Salsa M
- Quickie Salsa R



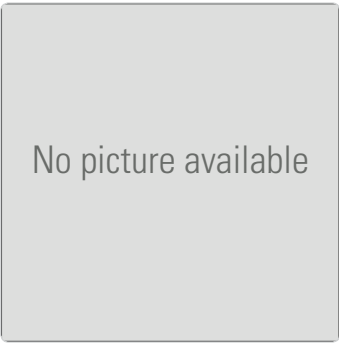
Huka Powered Flip Up Controller (Including Tray)

FMG-PI03-3065-07

HUKA centre mounted R-net flip-over joystick mount (with monochrome display). A switch is needed to operate. R-net control must be selected and tray needs to be chosen separately on the regular product order form.

Available On:

- Quickie JIVE F
- Quickie JIVE M
- Quickie JIVE R
- Zippie Salsa M
- Zippie Salsa R
- Quickie Salsa M
- Quickie Salsa R



Joystick Mounting (Both Sides)

FMG-PI01-2730-01

The joystick hand control can be mounted on both sides (left and right).

Available On:

- Quickie JIVE F
- Quickie JIVE M
- Quickie JIVE R
- Zippie Salsa M
- Zippie Salsa R
- Quickie Salsa M
- Quickie Salsa R
- Quickie Tango



Mimo Joystick Fixation

FMG-PI01-3126-01

Swings the control mounting inwards or outwards.

Available On:

- Quickie JIVE F
- Quickie JIVE M
- Quickie JIVE R
- Zippie Salsa M
- Zippie Salsa R
- Quickie Salsa M
- Quickie Salsa R



Piko Button

FMG-PI03-2774-02

Extremely durable and requires less force to push. Piko buttons are only available with the R-net LCD hand control or R-net Omni.

Available On:

- Quickie JIVE F
- Quickie JIVE M
- Quickie JIVE R
- Zippie Salsa M
- Zippie Salsa R
- Quickie Salsa M
- Quickie Salsa R



Powered Swing-Away Arm Chin Control (Overhead)

FMG-PI03-3008-01

The joystick is moved outwards and then swung overhead, meaning that the width of the chair is not changed and only the height needs to be considered. This customisation is for the swing-away arm only. The joystick needs to be selected on the regular product order form.

Available On:

- Quickie JIVE F
- Quickie JIVE M
- Quickie JIVE R
- Zippie Salsa M
- Zippie Salsa R
- Quickie Salsa M
- Quickie Salsa R



Rear View Camera (Wireless)

FMG-PI03-2778-02

Gives additional safety whilst manoeuvring through narrow situations. It is recommended to fit a tray table to mount the display onto.

Available On:

- Quickie JIVE F
- Quickie JIVE M
- Quickie JIVE R
- Zippie Salsa M
- Zippie Salsa R
- Quickie Salsa M
- Quickie Salsa R



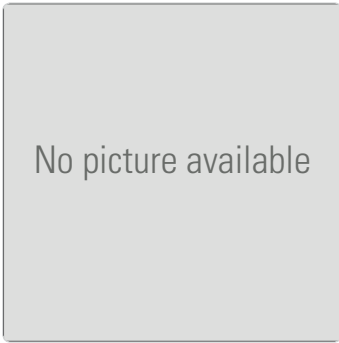
Switch It Foot Control

FMG-PI03-2752-03

Only available in combination with the R-net and Omni display (both need to be chosen on the regular product order form).

Available On:

- Quickie JIVE F
- Quickie JIVE M
- Quickie JIVE R
- Zippie Salsa M
- Zippie Salsa R
- Quickie Salsa M
- Quickie Salsa R



Articulating Legrests on Zippie Seating System

FMG-PB01-2783-03

Includes smaller calf pads.

Available On:

- Zippie Salsa M
- Zippie Salsa R



Divided Footboard (with Interlock)

FMG-MB04-0828-01

Not compatible with:

Seat widths larger than 40cm. The maximum user weight is 75kg.

Available On:

- Quickie EasyMax FF
- Quickie EasyMax SA
- Quickie Life FF
- Quickie Life SA
- Quickie Neon SA
- Breezy RubiX²



Divided Footboard (with Swing Mechanism Interlock)

FMG-MB04-0828-02

Not compatible with:

Seat widths larger than 40cm. The maximum user weight is 75kg.

Available On:

- Quickie EasyMax FF
- Quickie EasyMax SA
- Quickie Life FF
- Quickie Life SA
- Quickie Neon SA
- Breezy RubiX²



Divided Footplate

FMG-MB03-2960-01

This customisation is only possible with the stabilising rod (Argon²).

Available On:

- Quickie Helium

Footrest



Divided Footplate (for Short Lower Leg Length)

FMG-MD06-1292-02

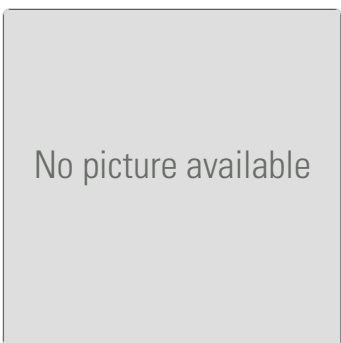
The footplate is mounted with clamps. If you require the mechanism, please consult the Built-4-Me team.

Not compatible with:
Maximum user weight of 75kg.

Available On:

- Quickie EasyMax FF
- Quickie EasyMax SA
- Quickie Life FF
- Quickie Life SA
- Breezy RubiX²

Footrest



Elevating Footrest (with Platform Footplate)

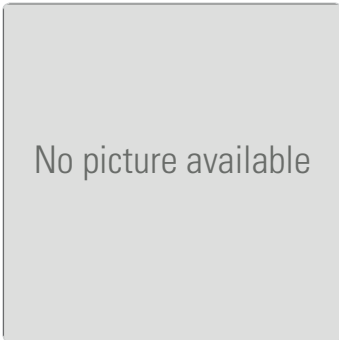
FMG-MB03-1777-01

Flipping-up the elevating footrests can only be achieved in parallel.

Available On:

- Quickie Life SA
- Quickie Neon SA

Footrest



Elevating Legrest, Right: Standard, Left: RubiX² Version

FMG-MB01-2893-02

Please consult with the Built-4-Me team if you require a seat depth smaller than 40cm.

Not compatible with:

Elevating legrest with length compensation. Lower leg length smaller than 28cm. Seat depth smaller than 40cm.

Available On:

- Quickie Neon SA Hemi



Elevating Legrests (RubiX² Version)

FMG-MB01-2893-01

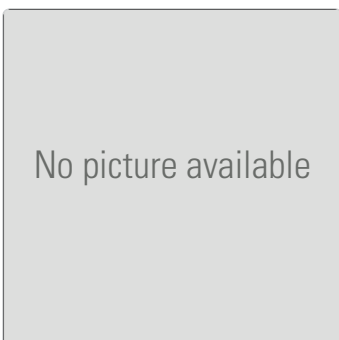
Please consult with the Built-4-Me team if you require a seat depth smaller than 40cm.

Not compatible with:

Elevating legrest with length compensation. Lower leg length smaller than 28cm. Seat depth smaller than 40cm.

Available On:

- Quickie Neon SA Hemi



Elevating Legrests, Left: Standard, Right: RubiX² Version

FMG-MB01-2893-03

Please consult with the Built-4-Me team if you require a seat depth smaller than 40cm.

Not compatible with:

Elevating legrest with length compensation. Lower leg length smaller than 28cm. Seat depth smaller than 40cm.

Available On:

- Quickie Neon SA Hemi



Flip-up Footboard (with Stabilising Bar)

FMG-MB03-2409-01

This customisation cannot be ordered without the stabiliser bar. If the wheelchair has a shorter lower leg length than the footrest, then the stabiliser bar will be mounted with clamps on the frame.

Available On:

- Quickie Helium

Footrest



Flip-up Footplate (with Interlock & Stabiliser Bar)

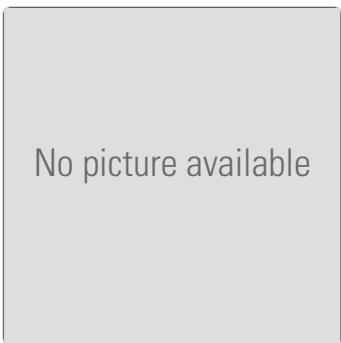
FMG-MB03-2409-03

This customisation cannot be ordered without the stabiliser bar. If the wheelchair has a shorter lower leg length than the footrest, then the stabiliser bar will be mounted with clamps on the frame.

Available On:

- Quickie Helium

Footrest



Flip-up Swing-Away Footplate (with Interlock & Stabiliser Bar)

FMG-MB03-2409-05

This customisation cannot be ordered without the stabiliser bar. If the wheelchair has a shorter lower leg length than the footrest, then the stabiliser bar will be mounted with clamps on the frame.

Available On:

- Quickie Helium

Footrest



Flip-up Swing-Away Footplate (with Stabiliser Bar)

FMG-MB03-2409-04

This customisation cannot be ordered without the stabiliser bar. If the wheelchair has a shorter lower leg length than the footrest, then the stabiliser bar will be mounted with clamps on the frame.

Available On:

- Quickie Helium



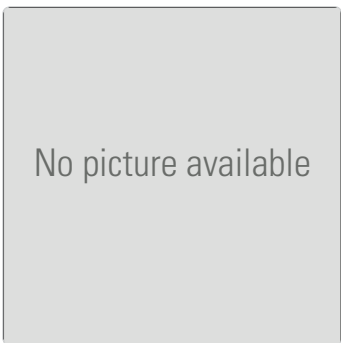
Footplate (Customised Size)

FMG-MB03-0836-01

Only available with an aluminium footplate. When ordering, the following measurements are required: footplate width, footplate depth and whether it should be enlarged to the front or to the back. The rotation (360°) of the castors/forks has to be warranted and footplate sizes larger than 25cm will need to be checked and confirmed by the Built-4-Me team before ordering.

Available On:

- Quickie EasyMax FF
- Quickie EasyMax SA
- Quickie Helium
- Quickie Life FF
- Quickie Life SA
- Quickie Neon FF
- Quickie Neon SA
- Breezy RelaX²
- Breezy RubiX²
- Zippie Simba
- Quickie Xenon SA
- Zippie Youngster 3



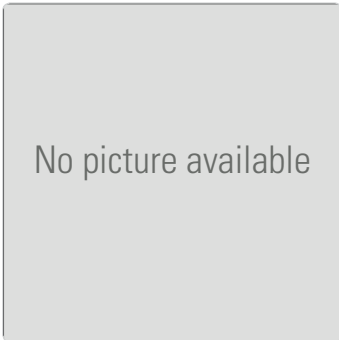
Footrest ALR (Pair)

FMG-MB01-2309-01

Quickie EasyMax SA with a pair of elevating legrests (ELR).

Available On:

- Quickie EasyMax SA



Footrest ALR LH RH (Standard)

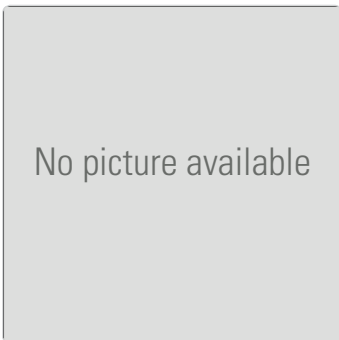
FMG-MB01-2309-03

Quickie EasyMax SA with an elevating legrest (ELR) on the right side and a standard legrest on the left side.

Available On:

- Quickie EasyMax SA

Footrest



Footrest ALR RH LH (Standard)

FMG-MB01-2309-02

Quickie EasyMax SA with an elevating legrest (ELR) on the left side and a standard legrest on the right side.

Available On:

- Quickie EasyMax SA

Footrest



Heel Cap

FMG-MB03-1051-01

Not compatible with:

Lightweight footrest. Auto-folding footrest. Only available with standard aluminium footrests. The footplates are limited-foldable or not foldable.

Available On:

- Quickie EasyMax FF
- Quickie EasyMax SA
- Quickie Helium
- Quickie Life FF
- Quickie Life SA
- Quickie Neon FF
- Quickie Neon SA
- Breezy RelaX²
- Breezy RubiX²
- Zippie Simba
- Quickie Xenon SA
- Zippie Youngster 3

Footrest



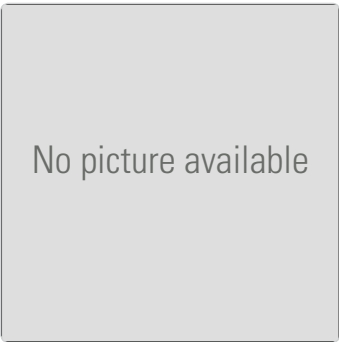
Knee Support (Swing-Away)

FMG-PB01-2773-01

This customisation is not possible with a skirt-guard.

Available On:

- Quickie JIVE F
- Quickie JIVE M
- Quickie JIVE R
- Zippie Salsa M
- Zippie Salsa R
- Quickie Salsa M
- Quickie Salsa R



Lightweight Footrest (Flip-up) with Stabilising Bar

FMG-MB03-2409-02

This customisation is only possible with the stabiliser bar. If the wheelchair has a short lower leg length then the stabiliser bar will be mounted with clamps on the frame.

Available On:

- Quickie Helium



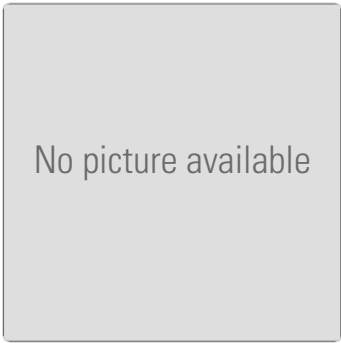
Longer Lower Leg Length

FMG-MB02-0830-01

The front seat height has to be 2cm - 3cm higher than the lower leg length. This customisation is only possible with the standard aluminium footplates of the Easy 200/300.

Available On:

- Quickie EasyMax FF
- Quickie EasyMax SA
- Quickie Life FF
- Quickie Life SA
- Quickie Neon FF
- Quickie Neon SA
- Breezy RelaX²
- Breezy RubiX²
- Quickie Xenon SA
- Zippie Youngster 3



Lower Leg Length Smaller than 17cm

FMG-MB04-2979-01

This customisation is only possible with the height mounted footrest version.

Available On:

- Zippie Simba

Footrest



Platform Footplate (for Short Lower Leg Length)

FMG-MD06-1292-01

The footplates are mounted with clamps (not including the mechanism).

Available On:

- Quickie EasyMax FF
- Quickie EasyMax SA
- Quickie Life FF
- Quickie Life SA
- Breezy RubiX²
- Quickie Xenon SA

Footrest



Platform Footrest

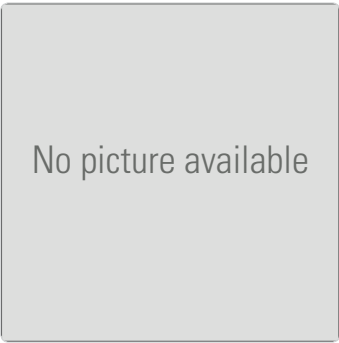
FMG-MB03-2855-01

The platform footrest is only available for seat widths of 38cm - 52cm.

Available On:

- Breezy RubiX²

Footrest



Powered Elevating Legrests on Zippie Seating System

FMG-PB01-2783-02

Includes smaller calf pads.

Available On:

- Zippie Salsa M
- Zippie Salsa R



Pro-Adjust Centre Mounted Powered Legrests

FMG-PB01-2910-01

The footboard can be descended to the ground. The lower leg length for a Quickie adult version is 32cm - 52cm, whilst the Zippie kids version is 22cm - 42cm. The powered centre mount is driven by a belt. As the footrest reaches the ground, if power is maintained it will automatically start its ascent.

Available On:

- Zippie Salsa M
- Quickie Salsa M



Single Footboard Interlock & Swing-Away Mechanism (Seat Width Greater than 46cm)

FMG-MB03-0829-02

Available On:

- Quickie EasyMax FF
- Quickie EasyMax SA
- Quickie Life FF
- Quickie Life SA
- Quickie Neon FF
- Quickie Neon SA
- Breezy RubiX²



Single Footboard Interlock (Seat Width Greater than 48cm)

FMG-MB03-0829-01

Available On:

- Quickie EasyMax FF
- Quickie EasyMax SA
- Quickie Life FF
- Quickie Life SA
- Quickie Neon FF
- Quickie Neon SA
- Breezy RubiX²

Footrest



Single Footboard Interlock (Seat Width Less than 48cm)

FMG-MB03-0826-01

Available On:

- Quickie EasyMax FF
- Quickie EasyMax SA
- Quickie Life FF
- Quickie Life SA
- Quickie Neon FF
- Quickie Neon SA
- Breezy RubiX²
- Quickie Xenon SA

Footrest



Single Footboard Interlock & Swing-Away Mechanism (Seat Width Less than 50cm)

FMG-MB03-0826-02

Available On:

- Quickie EasyMax FF
- Quickie EasyMax SA
- Quickie Life FF
- Quickie Life SA
- Quickie Neon FF
- Quickie Neon SA
- Breezy RubiX²
- Quickie Xenon SA

Footrest

Footrest



Stabiliser Bar on Footrest (Custom)

FMG-MB02-2405-01

Detailed measurements are required before ordering.

Available On:

- Quickie Helium

Footrest



Stump Pad

FMG-MB05-1669-01

The calf/stump pad will be clamped on the hanger or frame (and can be mounted on the left or right side).

Available On:

- All manual chairs and powerchairs

Footrest



Swing-Away Footrest with Continuous Footplate

FMG-MB03-2940-01

The maximum user weight allowed is 65kg.

Not compatible with:

Castors larger than 5". The front seat height has to be 5cm higher than the lower leg length. Seat incline that's less than 3cm. Snoll-on.

Available On:

- Quickie Helium



Width Adjustable Footboard

FMG-PB01-2838-01

The centrally mounted footboard is adjustable in width from 35cm - 50cm (measured at the front).

Not compatible with:
Powered centre mount legrest.

Available On:

- Quickie JIVE M
- Quickie Salsa M
- Zippie Salsa M

Footrest



Y-Style Foot Bar

FMG-MB02-3140-01

Not compatible with:
Castor housing close. 6" castor wheel. Snoll on. Height mounted footrest.

Available On:

- Quickie Helium

Footrest



50° Tilt

B4M-PC01-TI01

Available On:

- Quickie Salsa M

Frame



Abduction Frame (Variable)

FMG-MA03-0508-01

Please remember to specify the back angle (5°, 10°, 15°, 20°, 25° or 30°) when ordering.

Not compatible with:

Maximum user weight of 75kg. Single footplate. Desk sideguard when the seat depth is smaller than 40cm. One-arm-brake. The wheelchair will not be crash-tested with this customisation applied.

Available On:

- Zippie Youngster 3



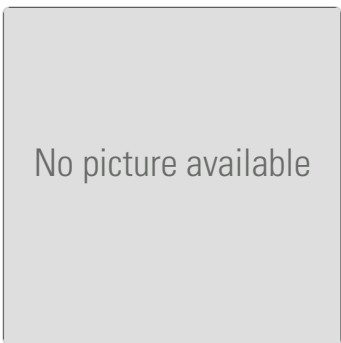
Custom Colour (From Existing Available Colours)

FMG-MA01-1185-01

For ordering a colour that is already available on another wheelchair.

Available On:

- Quickie EasyMax FF
- Quickie EasyMax SA
- Quickie Helium
- Quickie Life FF
- Quickie Life SA
- Quickie Neon FF
- Quickie Neon SA
- Quickie Shark RS
- Quickie Shark RT
- Zippie Simba
- Quickie Xenon SA
- Zippie Youngster 3



Custom Colour (Not Already Available on Another Product)

FMG-MA01-1185-02

For ordering a RAL-Code colour that is not already available on any other wheelchairs.

Available On:

- Quickie EasyMax FF
- Quickie EasyMax SA
- Quickie Helium
- Quickie Life FF
- Quickie Life SA
- Quickie Neon FF
- Quickie Neon SA
- Quickie Shark RS
- Quickie Shark RT
- Zippie Simba
- Quickie Xenon SA
- Zippie Youngster 3



Dahl Docking System for Salsa M

FMG-PA01-3121-02

For docking the Quickie Salsa M to a car. Dahl Engineering's newly developed electric Docking System provides unprecedented flexibility and safety for wheelchair users. The Docking System is the only system on the market that has been crash tested and TÜV certified for the Salsa M. Dahl plate only - the docking system needs to be purchased separately from Dahl and fitted by vehicle adaption agents.

Available On:

- Quickie Salsa M

Frame



Dahl Docking System for Salsa R

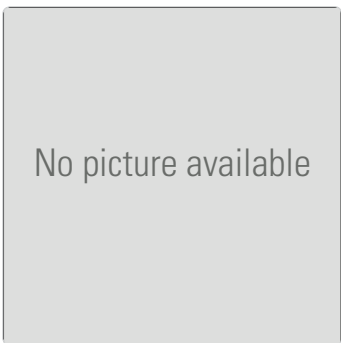
FMG-PA01-3121-01

For docking the Quickie Salsa R to a car. Dahl Engineering's newly developed electric Docking System provides unprecedented flexibility and safety for wheelchair users. The Docking System is the only system on the market that has been crash tested and TÜV certified for the Salsa R. Dahl plate only - the docking system needs to be purchased separately from Dahl and fitted by vehicle adaption agents.

Available On:

- Quickie Salsa R

Frame



F16 Power Add-on for 48cm Seat Width

FMG-MA01-0185-01

Not compatible with:

Seat widths larger than 48cm. All other no-go's are the same as a seat width of 46cm.

Available On:

- Quickie F16

Frame



Fixed Abduction Frame

FMG-MA03-2970-01

The fixed abduction frame is only possible with a 95° (EU)/85° (UK) frame and a 0cm frame inset. The maximum allowed user weight is 75kg.

Not compatible with:

Neon Swing Away. Seat depths smaller than 36cm. Seat widths larger than 42cm. 26" rear wheels. Standard brake. Handbike axle extension. Desk sideguards are only possible on request. It is not possible to mount a handbike on the fixed abduction frame. The wheelchair will not be crash-tested with this customisation applied.

Available On:

- Quickie Neon FF



Foil Wrapped Shroud

FMG-PA04-3002-01

The shroud is covered in a foil, giving a more matt style appearance (as opposed to gloss-style painted shroud).

Not compatible with:

The carbon-style foil is only available on the JIVE M.

Available On:

- Quickie JIVE F
- Quickie JIVE R
- Zippie Salsa M
- Quickie Salsa M



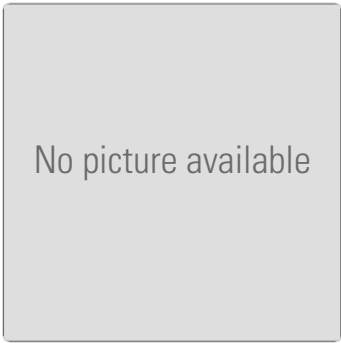
Frame Cut from below to Castor Link Tube

FMG-MA03-2817-01

This customisation makes it possible to achieve a shorter lower leg length. The following measures are possible - Neon 3cm, Helium and Xenon 2cm and EasyMax FF 5cm.

Available On:

- Quickie EasyMax FF
- Quickie Helium
- Quickie Neon FF
- Quickie Xenon SA



Seat Depth (50cm)

FMG-MA01-3100-01

The maximum load is 100kg.

Available On:

- Quickie Helium

Frame



Seat Depth Shorter than Frame Length

FMG-MA01-2685-01

Not compatible with:
Abduction frame.

Available On:

- Quickie Helium
- Zippie Simba

Frame



Seat Width (28cm - 30cm)

FMG-MA01-2969-01

Not compatible with:
Lightweight back. Lightweight upholstery. Comfort upholstery.

Available On:

- Quickie Helium

Frame



Wheel Base Extension (with One Axle)

FMG-MA03-3119-01

Only handbikes supplied by Praschberger can be mounted with this customisation.

Not compatible with:

Maximum load 100kg. Light brake. Suspension kit for the wheel base extension. The COG of the wheel base extension is always -6cm.

Available On:

- Quickie Helium



Gear Shifter and Brake (on Second Handle)

FMG-MJ02-2302-01

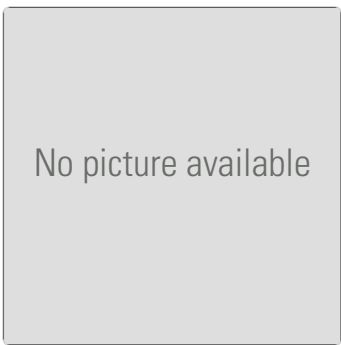
The gear shifter and the brake lever are mounted on the left and right handle.

Not compatible with:

Parking brake. 7 gear hub change. Fork with fixed welded crank housing. Crank housing higher than 49cm. Chain ring with 52 teeth.

Available On:

- Quickie Shark RT



Special V-Crank (Special Size)

FMG-MJ01-2386-01

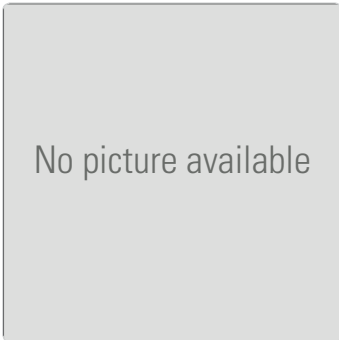
This crank will be clamped with two screws.

Not compatible with:

Standard V-crank.

Available On:

- Quickie Shark RS



Welded Crank Housing (with Special Measurements)

FMG-MJ04-3115-01

This customisation is only possible on a fork with a fixed welded crank housing. The maximum crank housing depth is 17.5cm and the lowest crank housing height is 39cm. All other measurements are similar to the serial fork.

Not compatible with:

Crank housing depth 15.5cm in combination with crank housing height 41cm, 42cm and 47cm. Crank housing depth 16.5cm in combination with Crank housing height 41cm, 42cm and 47cm.

Available On:

- Quickie Shark RS



Anti-Theft Bars

B4M-MC01-TB01

Available On:

- Lomax Uni 8
- Lomax Uni 9



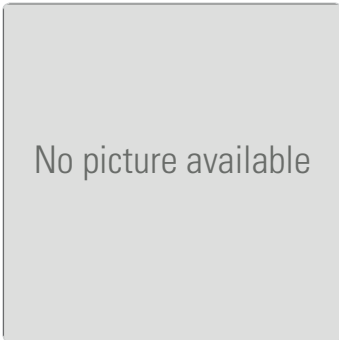
Extended Lap Belt Length (195cm)

FMG-PK01-2887-01

The extended lap belt is 1.95m long (the standard lap belt is 1.45m).

Available On:

- Quickie JIVE F
- Quickie JIVE M
- Quickie JIVE R
- Zippie Salsa M
- Zippie Salsa R
- Quickie Salsa M
- Quickie Salsa R



Infusion Stand

FMG-MK10-1494-01

The infusion stand will be mounted with clamps on the backrest tube.

Available On:

- Quickie EasyMax SA
- Quickie Helium
- Quickie Life FF
- Quickie Life SA
- Quickie Neon FF
- Quickie Neon SA
- Breezy RubiX²
- Quickie Xenon SA
- Zippie Youngster 3



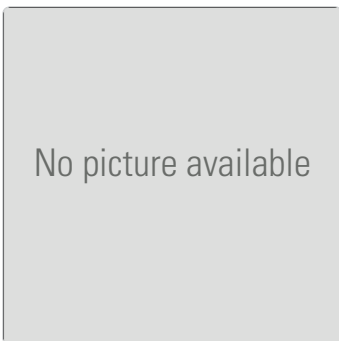
iPad Bag on Sideguard

FMG-PK01-2703-01

A protective bag for an iPad (to be attached to the sideguard/armrest). Measurements of 27cm width by 23cm length.

Available On:

- Quickie JIVE F
- Quickie JIVE M
- Quickie JIVE R
- Zippie Salsa M
- Zippie Salsa R
- Quickie Salsa M
- Quickie Salsa R



Mounting Bracket for Oxygen Bottle

FMG-MK10-1650-01

The oxygen bottle holder is available in diameters of 107mm and 119mm. Please remember to specify which size you need before ordering.

Available On:

- Quickie EasyMax SA
- Quickie Life FF
- Quickie Life SA
- Breezy RelaX²
- Breezy RubiX²
- Zippie Simba
- Zippie Youngster 3



Mounting of Medical Devices

FMG-MK10-1881-01

Please consult your Built-4-Me team in regards to feasibility. It's important to remember that the wheelchair (in combination with the medical device holder) is not crash-tested. The wheelchair is also only usable in the same condition as it was supplied to the customer (with anti-tip tubes). The fastening straps can only be removed when loading and removing the medical device - the chair must not be used without the safety straps.

Not compatible with:

The maximum approved payload may not be exceeded by the medical device and/or the holder of the medical device. The maximum allowed load for the holder is 10kg.

Available On:

- Zippie Simba
- Quickie Xenon SA
- Zippie Youngster 3

Options



Tray Table (with Customised Dimensions)

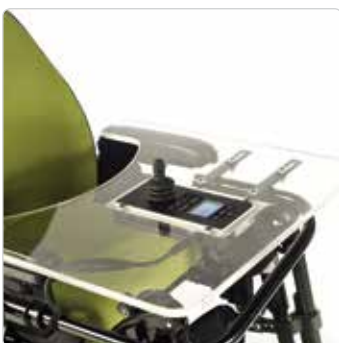
FMG-PK03-2744-01

Please remember to state your dimensions for the tray table on the Built-4-Me order form prior to ordering.

Available On:

- Quickie JIVE F
- Quickie JIVE M
- Quickie JIVE R
- Zippie Salsa M
- Zippie Salsa R
- Quickie Salsa M
- Quickie Salsa R

Options



Tray Table Centre Mount (for R-net Controls)

FMG-PK03-2744-02

This customisation is for the tray and mechanism only - the control system needs to be chosen on the regular product order form.

Available On:

- Zippie Salsa M
- Zippie Salsa R
- Quickie Salsa M
- Quickie Salsa R

Options



Tray Table Centre Mounted (for VR2 Controls)

FMG-PK03-2744-03

This customisation is for the tray and mechanism only - the control system needs to be chosen on the regular product order form.

Available On:

- Zippie Salsa M
- Zippie Salsa R
- Quickie Salsa M
- Quickie Salsa R



6° Wheel Camber

FMG-MF05-0729-01

Not compatible with:
Desk sideguard. Maximum load of 125kg. Camber more than 6°.

Available On:

- Quickie EasyMax FF
- Quickie EasyMax SA
- Quickie Life FF
- Quickie Life SA
- Zippie Youngster 3



22" Tyre Marathon Evolution Plus

FMG-MF02-2560-01

These tyres are puncture resistant and have a rugged tread.

Available On:

- Quickie Life FF
- Quickie Life SA
- Quickie Neon FF
- Quickie Neon SA
- Breezy RubiX²
- Zippie Simba
- Zippie Youngster 3



24" Solid Tyre for One Arm Drive

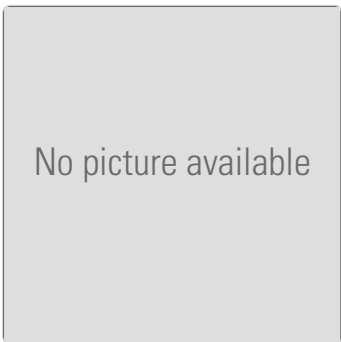
FMG-MF02-2533-01

The solid tyre is available in black only.

Available On:

- Breezy RubiX²

Rear Wheel



26" Solid Tyres

FMG-MF02-3133-01

This tyre is only available in grey, in a size of 26" x 1" and only for universal and design wheels.

Available On:

- Quickie HeliX²
- Quickie Neon FF
- Quickie Neon SA

Rear Wheel



26" Tyre (Marathon Evolution Plus)

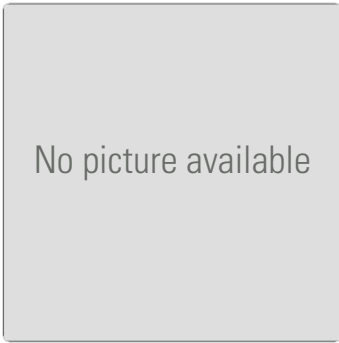
FMG-MF02-2560-02

These tyres are puncture resistant and have a rugged tread.

Available On:

- Quickie Neon FF
- Quickie Neon SA
- Quickie Shark RS
- Quickie Shark RT

Rear Wheel



26" Wheel

FMG-MF01-0632-01

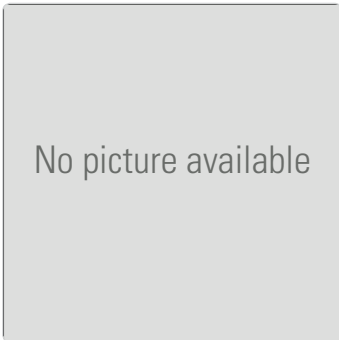
This customisation is only possible for standard 26" universal wheels, 26" wheels with drum brake and 26" wheels with a one arm drive. If you select the drum brake or one-arm-drive, there will be an additional cost of that item.

Not compatible with:

Sideguards with fender when the back seat height is smaller than 49cm. Desk sideguards with a fixed armpad when the back seat height is smaller than 46cm. 8" Castors. The maximum back seat height with a one-arm-drive is 50cm.

Available On:

- Quickie EasyMax FF
- Quickie EasyMax SA
- Quickie Life SA
- Quickie Neon SA



Assembly Kit (Power 105)

FMG-MF01-3143-01

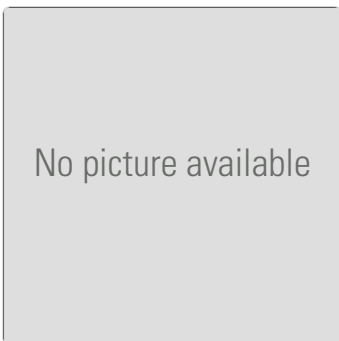
This is only possible with 24" wheels, two anti tip tubes and a centre of gravity of 2cm, 3.2cm or 4.4cm.

Not compatible with:

Seat height less than 46cm. Light compact brake. Camber. Suspension. Transit wheel. Tipping tube. Handbike axle/amputee axle.

Available On:

- Quickie Helium



Assembly Kit (Power 106)

FMG-MF01-2200-01

Not compatible with:

Camber. Only on a back seat height of 45cm or 48cm adjustable.

Available On:

- Quickie EasyMax FF
- Quickie EasyMax SA



Custom Rear Tyres

FMG-MF02-2402-01

Please consult with the Built-4-Me team in regards to feasibility.

Available On:

- Quickie EasyMax FF
- Quickie EasyMax SA
- Quickie Helium
- Quickie Life FF
- Quickie Life SA
- Quickie Neon FF
- Quickie Neon SA
- Zippie Simba
- Quickie Xenon SA
- Zippie Youngster 3

Rear Wheel



Decon Spider Wheel

FMG-MF01-1436-01

This wheel is only available in size 24". The following handrims are possible: Stainless steel handrims, Aluminium handrims (in black or silver), Titanium handrims (with upcharge) or Supergrip handrims (with upcharge).

Available On:

- Quickie EasyMax FF
- Quickie EasyMax SA
- Quickie Helium
- Quickie Life FF
- Quickie Life SA
- Quickie Neon FF
- Quickie Neon SA
- Quickie Xenon SA
- Zippie Youngster 3

Rear Wheel



Handrim (26") Supergrip

FMG-MF06-1687-01

Not compatible with:

This handrim can't be mounted extremely close using this customisation. Spinergy wheels and Supergrip handrim aren't available.

Available On:

- Quickie Neon FF
- Quickie Neon SA

Rear Wheel

Rear Wheel



Handrim (Extra Close Mount)

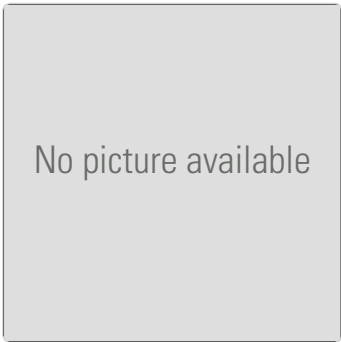
FMG-MF06-1378-01

To mount the handrim extra-close, the distance between the rim and the handrim will be 7mm.

Available On:

- Quickie EasyMax FF
- Quickie EasyMax SA
- Quickie Helium
- Quickie Life FF
- Quickie Life SA
- Quickie Neon FF
- Quickie Neon SA
- Breezy RubiX²
- Zippie Simba
- Quickie Xenon SA
- Zippie Youngster 3

Rear Wheel



Handrim (Stainless Steel 24" without Tabs)

FMG-MF06-2514-02

Not compatible with:

Only for standard wheels with 6 tabs. Only for 24" wheels.

Available On:

- Breezy Relax²
- Breezy RubiX²

Rear Wheel



Handrim (Supergrip 24" without Tabs)

FMG-MF06-2514-01

Not compatible with:

Only for standard wheels with 6 tabs. Only for 24" wheels.

Available On:

- Breezy Relax²
- Breezy RubiX²



Handrim (Supergrip)

FMG-MF06-1980-01

Not compatible with:

It's not possible to mount this handrim extremely close.

Available On:

- Quickie EasyMax FF
- Quickie EasyMax SA
- Quickie Helium
- Quickie Life FF
- Quickie Life SA
- Quickie Neon FF
- Quickie Neon SA
- Zippie Simba
- Quickie Xenon SA
- Zippie Youngster 3

Rear Wheel



Knobbly Handrim

FMG-MF06-1980-05

Not compatible with:

It's not possible to mount this handrim extremely close.

Available On:

- Quickie EasyMax FF
- Quickie EasyMax SA
- Quickie Helium
- Quickie Life FF
- Quickie Life SA
- Quickie Neon FF
- Quickie Neon SA
- Zippie Simba
- Quickie Xenon SA
- Zippie Youngster 3

Rear Wheel



Max Grip Handrim

FMG-MF06-1980-03

Not compatible with:

It's not possible to mount this handrim extremely close.

Available On:

- Quickie EasyMax FF
- Quickie EasyMax SA
- Quickie Helium
- Quickie Life FF
- Quickie Life SA
- Quickie Neon FF
- Quickie Neon SA
- Quickie Xenon SA
- Zippie Youngster 3

Rear Wheel

Rear Wheel



One Arm Drive

FMG-MF01-2441-01

Available On:

- Quickie EasyMax FF
- Quickie EasyMax SA

Rear Wheel



One Arm Drive

FMG-MF01-2551-01

Not compatible with:

Camber. Axle extension. Suspension system. Quickie desk sideguards. Seat heights smaller than 42cm (24"). Only available with cross spoked universal wheels and stainless steel handrim.

Available On:

- Quickie Neon FF
- Quickie Neon SA

Rear Wheel



One Arm Drive

FMG-MF01-3116-01

This customisation is only possible with the universal wheel and stainless steel handrim. The following rear seat heights are possible - 22" (38cm - 46 cm), 24" (40cm - 48 cm) and 26" (43cm - 50 cm).

Not compatible with:

Drum brake. Suspension. Camber. 25" wheels. Centre-of-gravity of 2cm - 3cm and higher than 6cm. Single post sideguards. Wheel base extension.

Available On:

- Quickie Helium



One Arm Drive (24" Wheel)

FMG-MF01-3059-01

Not compatible with:

Single post sideguard. If the seat depth is smaller than 40cm, a special mounting bracket will be used. Only with silver anodised colour package. For wheelchairs with 0° camber only.

Available On:

- Quickie Life FF
- Quickie Life SA

Rear Wheel



One Arm Drive (24" Wheels with Left-Hand One-Arm Brake)

FMG-MF01-3059-03

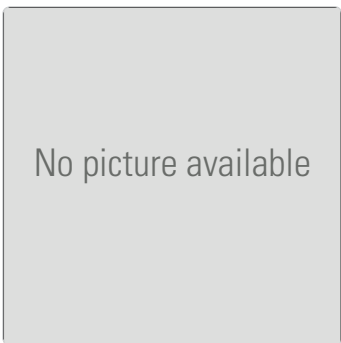
Not compatible with:

Single post sideguard. If the seat depth is smaller than 40cm, a special mounting bracket will be used. Only with silver anodised colour package. For wheelchairs with 0° camber only.

Available On:

- Quickie Life FF
- Quickie Life SA

Rear Wheel



One Arm Drive (24" Wheels with Right-Hand One-Arm Brake)

FMG-MF01-3059-02

Not compatible with:

Single post sideguard. If the seat depth is smaller than 40cm, a special mounting bracket will be used. Only with silver anodised colour package. For wheelchairs with 0° camber only.

Available On:

- Quickie Life FF
- Quickie Life SA

Rear Wheel

Rear Wheel



One Arm Drive (for Seat Width 24cm and 26cm)

FMG-MF01-0885-01

Not compatible with:
Camber. Seat widths smaller than 24cm.

Available On:
• Zippie Youngster 3

Rear Wheel



One Arm Drive (for Seat Width 38cm)

FMG-MF01-2885-01

Not compatible with:
Drum brake. Quick release axle.

Available On:
• Breezy RubiX²

Rear Wheel



One Arm Drive (for Seat Width 41cm - 43cm)

FMG-MF01-2885-02

Not compatible with:
Drum brake. Quick release axle.

Available On:
• Breezy RubiX²



One Arm Drive (for Seat Width 41cm - 43cm)

FMG-MF01-2885-03

Not compatible with:
Drum brake. Quick release axle.

Available On:

- Breezy RubiX²

Rear Wheel



One Arm Drive (with 6° Wheel Camber)

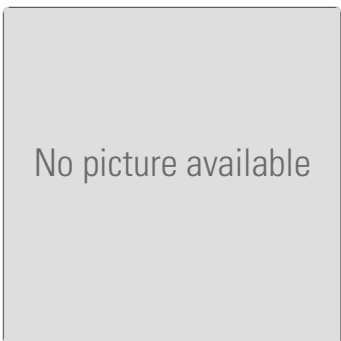
FMG-MF01-2950-01

Not compatible with:
20" Rear wheel. Seat widths smaller than 28cm. Only possible with 6° camber. Only possible with cross-spoked universal wheel. Back angle 90° in combination with a centre of gravity of 5cm - 6cm. Adjustable rear seat heights of 22" (37cm/38.5cm/40cm/44cm)

Available On:

- Zippie Simba

Rear Wheel



Proton Rear Wheel (20")

FMG-MF01-0855-02

The possibility of the rear seat height will need to be checked before ordering.

Not compatible with:
The 20" Proton rear wheel is only available with pneumatic tyres and anodised or painted aluminium handrim.

Available On:

- Quickie EasyMax FF
- Quickie EasyMax SA
- Quickie Helium
- Quickie Life FF
- Quickie Life SA
- Quickie Neon FF
- Quickie Neon SA
- Quickie Xenon SA
- Zippie Youngster 3

Rear Wheel

Rear Wheel



Quad Quick Release Axle

FMG-MF04-2460-01

The tetra axle is only possible with an additional spacer ring (the ring will be mounted between the hub and the release lever).

Not compatible with:
Drum brake.

Available On:

- Quickie EasyMax FF
- Quickie EasyMax SA
- Quickie Helium
- Quickie Life FF
- Quickie Life SA
- Quickie Neon FF
- Quickie Neon SA
- Zippie Simba
- Quickie Xenon SA
- Zippie Youngster 3

Rear Wheel



Rear Wheel (22")

FMG-MF01-2986-01

The feasibility of the back seat height must be checked before ordering.

Not compatible with:
Not all wheels, tyres and handrim types are available for the 22" wheels.

Available On:

- Quickie Helium
- Quickie Xenon SA

Rear Wheel



Rear Wheel (26")

FMG-MF01-2986-02

The feasibility of the back seat height must be checked before ordering.

Not compatible with:
Not all wheels, tyres and handrims are available for 26" wheels. Seat depth less than 42cm with centre-of-gravity of 13cm.

Available On:

- Quickie Helium
- Quickie Xenon SA



Revolving Wheel with Handrim and One-Arm Drive

FMG-MF06-2004-01

The stainless steel handrim can be mounted close or wide apart.

Available On:

- Zippie Youngster 3

Rear Wheel



Spinergy Wheel

FMG-MF01-2584-01

When ordering, you will need to specify the size (22", 24", 25" or 26"), number of spokes (12, 18 or 24) and the colour of the spokes (black, white, blue, red, yellow, orange, pink or green). If you choose black spokes then the hub is always silver (coloured spokes will have a black hub). The wheel rim is always in black.

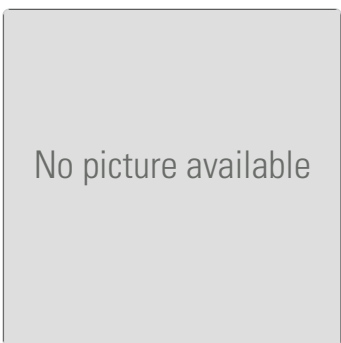
Not compatible with:

Not all combinations are compatible with each other.

Available On:

- Quickie EasyMax FF
- Quickie EasyMax SA
- Quickie Helium
- Quickie Life FF
- Quickie Life SA
- Quickie Neon FF
- Quickie Neon SA
- Zippie Simba
- Quickie Xenon SA
- Zippie Youngster 3

Rear Wheel



Stainless Steel Handrim

FMG-MF06-1980-04

Not compatible with:

Mounting extremely close. 20" Wheels.

Available On:

- Quickie EasyMax FF
- Quickie EasyMax SA
- Quickie Helium
- Quickie Life FF
- Quickie Life SA
- Quickie Neon FF
- Quickie Neon SA
- Zippie Simba
- Quickie Xenon SA
- Zippie Youngster 3

Rear Wheel



Titanium Handrim

FMG-MF06-1980-02

Not compatible with:

It's not possible to mount this handrim extremely close.

Available On:

- Quickie EasyMax FF
- Quickie EasyMax SA
- Quickie Helium
- Quickie Life FF
- Quickie Life SA
- Quickie Neon FF
- Quickie Neon SA
- Zippie Simba
- Quickie Xenon SA
- Zippie Youngster 3



Universal Rear Wheel (20")

FMG-MF01-0855-01

Please check the possibility of the rear seat height first. The 20" universal rear wheel is only available as a cross spoked version, with solid tyres and anodised aluminium handrim.

Available On:

- Quickie EasyMax FF
- Quickie EasyMax SA
- Quickie Helium
- Quickie Life FF
- Quickie Life SA
- Quickie Neon FF
- Quickie Neon SA
- Zippie Simba
- Quickie Xenon SA
- Zippie Youngster 3



20" Rear Wheels

B4M-MC01-RW01

Available On:

- Lomax Uni 8
- Lomax Uni 9



Additional Pocket under the Seat Upholstery

FMG-MC01-1194-01

Please note that if the seat width is small, the additional pocket will also be small.

Available On:

- Quickie EasyMax FF
- Quickie EasyMax SA
- Quickie Helium
- Quickie Life FF
- Quickie Life SA
- Quickie Neon FF
- Quickie Neon SA
- Zippie Simba
- Quickie Xenon SA
- Zippie Youngster 3



Fixed Backrest and Seat (with Abduction Wedge)

FMG-MC02-1770-01

The abduction wedge is mounted on the solid seat and can be folded to the front.

Available On:

- Quickie EasyMax FF
- Quickie EasyMax SA
- Quickie Helium
- Quickie Life FF
- Quickie Life SA
- Quickie Neon FF
- Quickie Neon SA
- Breezy RubiX²
- Zippie Simba
- Quickie Xenon SA
- Zippie Youngster 3



Fixed Seat

FMG-MC02-1322-01

This is the padded solid seat (3010) as used on the Easy 200/300. Please use item code FMG-MC02-1322-01 for the fixed back.

Available On:

- Quickie EasyMax FF
- Quickie EasyMax SA
- Quickie Helium
- Quickie Life FF
- Quickie Life SA
- Breezy RubiX²
- Zippie Simba
- Quickie Xenon SA
- Zippie Youngster 3



Front Seat Height (Enlarged)

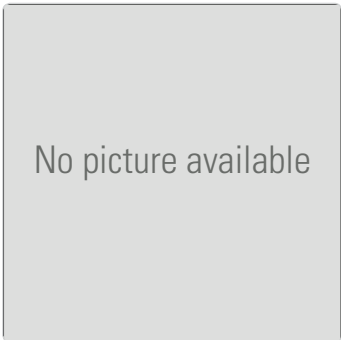
FMG-MC04-0823-01

Not compatible with:

Fork with quick release axle. The maximum front seat height with 6" castor is 54cm. Maximum front seat height with 7" castor is 55cm.

Available On:

- Quickie EasyMax SA
- Quickie Life FF



Hot Seat on Quickie JIVE (Maximum Payload 140kg)

FMG-PC13-2914-01

This is the Hot Seat from the Quickie Salsa R/M, but on the JIVE. The maximum payload is 140kg. Powered options must be chosen on the regular product order form.

Available On:

- Quickie JIVE F
- Quickie JIVE M
- Quickie JIVE R



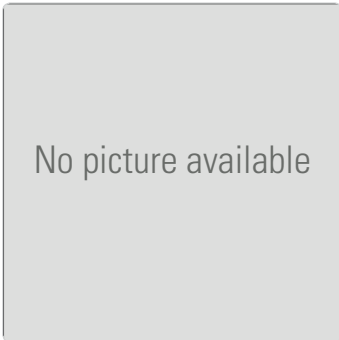
JAY Comfort Seat Place 2cm

FMG-PC09-2790-03

JAY Comfort Seat plate (2cm) without threshold in different sizes, different colours and different materials. The image shows the optimum Comfort Seat cushion in orange and vented upholstery.

Available On:

- Zippie Salsa M
- Zippie Salsa R



JAY Optimum Comfort Cushion

FMG-PC09-2790-02

Available in different sizes, different colours and different materials (the picture shows orange, vented upholstery).

Available On:

- Zippie Salsa M
- Zippie Salsa R

Seat / Cross Brace



JAY Standard Comfort Seating, Different Sizes (Seat Width, Seat Depth)

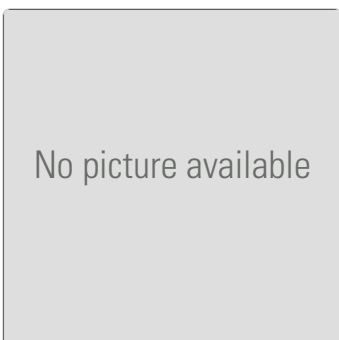
FMG-PC09-2790-01

The image shows the JAY Optimum Comfort cushion with orange, vented upholstery.

Available On:

- Zippie Salsa M
- Zippie Salsa R

Seat / Cross Brace



Lower Seat Height

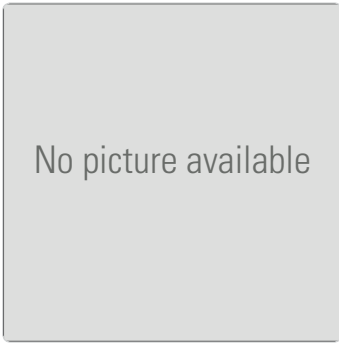
FMG-MC04-2678-01

Please consult your Built-4-Me team in regards to feasibility.

Available On:

- Quickie Neon SA

Seat / Cross Brace



Seat Cushion (Special Dimensions)

FMG-MC02-1145-01

Please consult with the Built-4-Me team in regards to feasibility. The costs are subject to your request.

Available On:

- Quickie EasyMax FF
- Quickie EasyMax SA
- Quickie Helium
- Quickie Life FF
- Quickie Life SA
- Quickie Neon FF
- Quickie Neon SA
- Breezy RubiX²
- Zippie Simba
- Quickie Xenon SA
- Zippie Youngster 3



Seat Depth (20cm - 22cm)

FMG-MC05-3014-01

This seat depth will be achieved by shortening the seat sling.

Available On:

- Zippie Simba



Seat Depth (Less than 30cm)

FMG-MC06-2747-01

The seat depth is achieved by shortening the cross brace and the seat sling. The frame will have the same length as the shortest serial-production frame.

Available On:

- Quickie Neon FF
- Quickie Neon SA



Seat Depth Adjustment (Independent of Frame)

FMG-MC06-2553-01

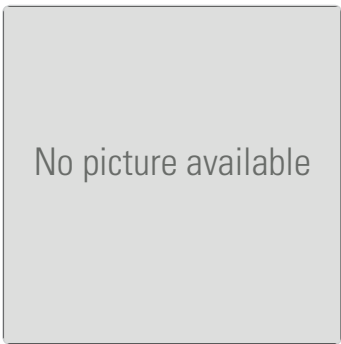
Not compatible with:

A shorter frame as a seat sling is not possible on a Neon SA. The maximum possible difference is 4cm.

Available On:

- Quickie Neon FF
- Quickie Neon SA
- Quickie Xenon SA

Seat / Cross Brace



Seat Height (41.5cm)

FMG-MC04-3091-01

Not compatible with:

Drum brake. Only with 6" castors. Only with 22" rear wheels.

Available On:

- Breezy Relax²

Seat / Cross Brace



Welded Front Castor Housing for Custom Seat Height

FMG-MC04-2559-01

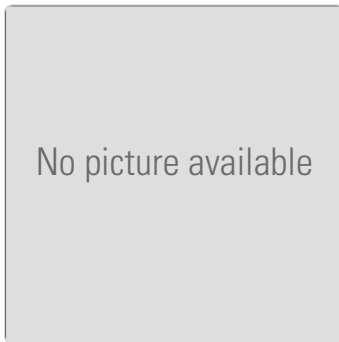
Not compatible with:

The castor housing will be welded higher or lower as usual on the frame. Please consult the Built-4-Me team for feasibility first.

Available On:

- Quickie Neon FF

Seat / Cross Brace



Welded Front Castor Housing for Custom Seat Height

FMG-MC04-2998-01

Please consult with your Built-4-Me team first in regards to feasibility. The following information will be required - seat height, castor size, footrest, lower leg length and frame version.

Available On:

- Quickie Helium
- Quickie Xenon SA



Zippie Seat (Mounted on Quickie JIVE)

FMG-PC10-2914-01

Powered options will need to be chosen on the regular product order form. If you also need a powered articulating legrest, only the centre-mount version (2910) is available. If you'd like the wheelchair branded Zippie, you must state it on the order form.

Available On:

- Quickie JIVE M



Armpad (with Customised Dimensions)

FMG-ME02-2600-01

Please consult the Built-4-Me team in regards to feasibility of the special measurements before ordering. This customisation is only possible with the Desk sideguards. The longer armpads are only valid for a maximum load of 80kg.

Available On:

- Quickie EasyMax FF
- Quickie EasyMax SA
- Quickie Life SA
- Quickie Neon FF
- Quickie Neon SA
- Quickie Neon SA Hemi
- Breezy RubiX²



Armrest (Swing-Away)

FMG-PE02-2801-01

Flip-up armrest.

Available On:

- Quickie JIVE F
- Quickie JIVE M
- Quickie JIVE R

Sideguard



Coloured Metal Parts on Armrests

B4M-MC01-CP01

Available On:

- Lomax Uni 8
- Lomax Uni 9

Sideguard



Desk Sideguard

FMG-ME01-2054-01

Please note that the side guard is very high - the lowest measure from the seat canvas to the highest point of the armrest is 28cm. Only a 1° camber is possible.

Available On:

- Quickie EasyMax FF
- Quickie EasyMax SA

Sideguard



Enlarged Arm Pad with Aluminium Sideguards (Easy Style)

FMG-ME02-0515-01

The armpad is 36cm long and will be mounted with an additional holder on the sideguard. The price is for the armpad only - please choose the sideguard and fender on the regular product order form.

Available On:

- Quickie EasyMax FF
- Quickie EasyMax SA



Flip-up Armrests

FMG-ME02-2089-01

Not compatible with:

Back heights smaller than 30cm. Height adjustable push handles. Standard back upholstery. Lumbar bend. In case of a low seat back height, the armpad will be mounted higher.

Available On:

- Quickie EasyMax FF
- Quickie EasyMax SA
- Quickie Helium
- Quickie Life SA
- Quickie Neon FF
- Quickie Neon SA
- Quickie Xenon SA
- Zippie Youngster 3



Padded Armrest (Angle Adjustable)

FMG-ME02-2357-01

Not compatible with:

Angle adjustable back with gas compression spring. The straight back frame from the Easy 200/300 will be mounted.

Available On:

- Quickie EasyMax FF
- Quickie EasyMax SA
- Zippie Youngster 3



Padded Armrest (Angle Adjustable)

FMG-ME02-3017-01

Not compatible with:

Lightweight backrest. Only for maximum load of 100kg. Height adjustable push handles in combination with JAY Backrest. Only with an angle adjustable backrest.

Available On:

- Quickie Helium



Padded Armrest (Angle Adjustable)

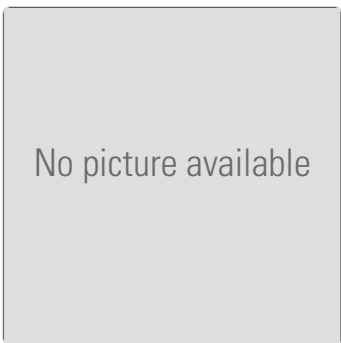
FMG-ME02-3087-01

Not compatible with:

Lightweight back. Maximum user weight 100kg. Without sideguards. Slim style sideguards. Single post sideguards. Plastic sideguards. Desk sideguards. Axle receiver passive (Xenon SA). The passive axle receivers are used with rear seat heights smaller than 42cm.

Available On:

- Quickie Xenon SA



Padded Armrest with Angle Adjustable 90° Back

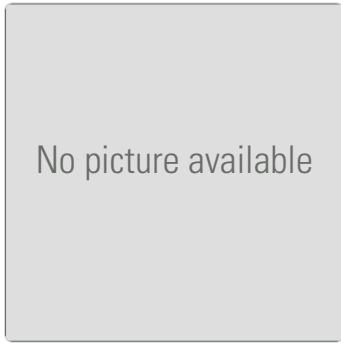
FMG-ME02-2640-01

Not compatible with:

Backrest heights of 25cm - 30cm. Desk sideguard.

Available On:

- Quickie Neon FF
- Quickie Neon SA



Plastic Sideguard (with Clothes Protector)

FMG-ME01-2143-05

Not compatible with:

Only possible with 90° backrest that's not foldable. Small rear seat heights.

Available On:

- Quickie Helium
- Quickie Life FF
- Quickie Life SA
- Quickie Neon FF
- Quickie Neon SA
- Quickie Xenon SA



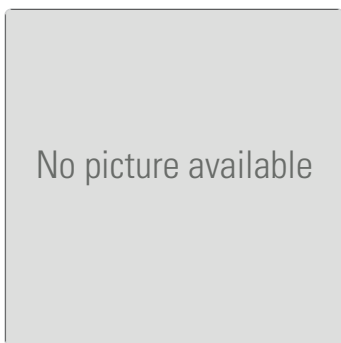
Sideguards Made to Suit

B4M-PC01-SI01

Please consult the Built-4-Me team in regards to feasibility of the special measurements before ordering.

Available On:

- Quickie Salsa M



Standard Sideguard (Aluminium)

FMG-ME01-2143-01

Not compatible with:

Only possible with 90° backrest that's not foldable.

Available On:

- Quickie Helium
- Quickie Life SA
- Quickie Neon FF
- Quickie Neon SA
- Quickie Xenon SA



Standard Sideguard (with Armpad and Clothes Protector)

FMG-ME01-2143-04

Not compatible with:

Only possible with 90° backrest that's not foldable. Small rear seat heights.

Available On:

- Quickie Helium
- Quickie Life SA
- Quickie Neon FF
- Quickie Neon SA
- Quickie Xenon SA

Sideguard



Standard Sideguard (with Armpad)

FMG-ME01-2143-03

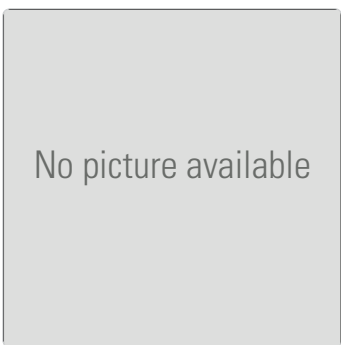
Not compatible with:

Only possible with 90° backrest that's not foldable.

Available On:

- Quickie Helium
- Quickie Life SA
- Quickie Neon FF
- Quickie Neon SA
- Quickie Xenon SA

Sideguard



Standard Sideguard (with Clothes Protector)

FMG-ME01-2143-02

Not compatible with:

Only possible with 90° backrest that's not foldable. Small rear seat heights.

Available On:

- Quickie Helium
- Quickie Life SA
- Quickie Neon FF
- Quickie Neon SA
- Quickie Xenon SA

Sideguard



Swing-Away and Detachable Armrest Tubes

FMG-ME02-3151-01

Not compatible with:
Angle adjustable and foldable backrest.

Available On:

- Quickie Life R
- Quickie Life SA



www.SunriseMedical.co.uk/Built4Me



Sunrise Medical Limited

Thorns Road
Brierley Hill
West Midlands
DY5 2LD

Tel: +44 (0)845 605 66 88

Fax: +44 (0)845 605 66 89

www.SunriseMedical.co.uk