

Q300® M Mini Teens



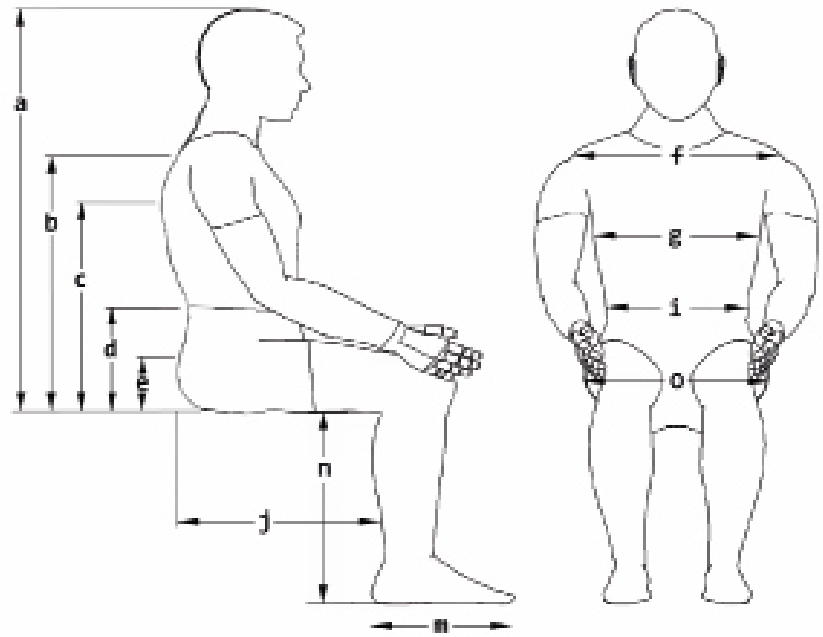
**UK
CA
CE**

ORDER FORM

Billing Address Or Customer-ID			Shipping Address	Identical To Billing Address
C.-ID:			C.-ID:	
Name:			Name:	
Street:			Street:	
Town/PC:			Town/PC:	
E-Mail:			E-Mail:	
Phone:			Phone:	
Order Information			User Weight	
Order	Calculation	Built-4-Me®	User Weight Capacity: 120 kg	
Purchase Order No.:			User Weight: kg	
Art. No.: 2200030M-050		Reimbursement Code:		
Order Date:	Day	Month	Year	
			Base Price	£6,750

Client Measurements

a) Top Of Head To Seat	mm
b) Top Of Shoulder To Seat	mm
c) Underarm To Seat	mm
d) Elbow To Seat	mm
e) Top Of Pelvis To Seat	mm
f) Shoulder Width	mm
g) Trunk Width	mm
i) Hip Width	mm
j) Actual Sitting Depth	mm
m) Foot Length	mm
n) Lower Leg Length	mm
o) Actual Seat Width	mm



Seating Specifications

All Bases Prepared For DAHL Docking Station		Seat Type	Teens Seat
Typical WC Weight	Without Batteries 80 kg	Seat Size Range	Width 300 mm - 400 mm, Depth 360 mm - 500 mm
	With Batteries from 103 kg	Seat To Floor Height Range	410 mm - 490 mm

MWD Base Specifications

User Weight Capacity	120 kg	Drive Wheels	12", 13" or 14" Drive Wheels (Black)
Base Size	Width Min. 520 mm	Tyres / Castors	7" Front / 7" Rear (Black)
Drive Control	VR2, Option R-Net	Charger	8 A Dual Mode Charger
Driving Range	Up To 31 km	Battery Size	41, 50 & 56 Ah Batteries
Drive Motors	2-Pole 6 / 10 kph, 4-Pole 6/8 kph	Colour Accents	7 Colour Accents
Ground Clearance	70 mm	Frame Colour	Black

Q300 M Mini Teens Drive Base		£
QZT000074	Q300 M Mini (MWD Base Chair)	6750
Standard Seat Size		£
Seat Cushion Width		Seat Depth
SW30	11" (300 mm)	SD36 14" (360 mm) (1)
SW32	12" (320 mm)	SD38 15" (380 mm) (1)
SW34	13" (340 mm)	SD40 16" (400 mm)
SW36	14" (360 mm)	SD42 16.5" (420 mm)
SW38	15" (380 mm)	SD44 17" (440 mm)
SW40	16" (400 mm)	SD46 18" (460 mm)
		SD48 19" (480 mm) (2)
		SD50 20" (500 mm) (2)
Seat & Cushion Type		£
QZT020109	Firm Seat Board (Standard with Teens Seat)	0
QZT020120	2" Standard Foam Seat Cushion	0
QZT020110	Omit Seat Cushion	0
Seat Heights (3)		£
SH41	410 mm (4)	0
SH43	430 mm (5)	0
SH45	450 mm (6)	0
SH47	470 mm	0
SH49	490 mm	0
Powered Seating Options		£
QZT130002	Manual Tilt (3° preset tilt)	0
QZT130004	Posterior Tilt, Powered, 0° - 30° (8)	1150
QZT130007	Posterior Tilt, Powered, 0° - 50° (8)	1350
QZT130012	Posterior Tilt, Powered, -5° - 25° (8)	1290
QZT130009	Seat Elevator (300 mm) / Tilt Module (Tilt 0° - 30°), Powered (7)	2050
Backrest Frame Type		£
QZT030018	Mechanical Fixed Recline Back (-4 to 16° in 3 steps)	0
Back Cushion Type		£
QZT030301	Sling Back, With Tension Adjustable Straps (See Section A)	0
QZT030152	JAY Shape, Back Cushion (See Section B)	0
QZT030151	SEDEO LITE, Back Cushion (See Section C)	0
QZT030054	JAY J3, Back Cushion (See Section D)	0
A - Sling Back Height		£
BH435	435 mm	0
BH46	460 mm	0
BH485	485 mm	0
BH51	510 mm	0
BH535	535 mm	0

(1) Only With QZT030214 SEDEO LITE Deep Contour Active

(2) Not With QZT030214 SEDEO LITE Deep Contour Active

(3) Measured From Front Of Seat Pan To Floor. Obtain Quote To Verify Seat To Floor Height. Seat Heights May Vary +/- 10mm To Cover Tolerances And Drive Wheel Size.

(4) Only With QZT130002 Manual Tilt

(5) Only With QZT130002 Manual Tilt Or QZT130004 Powered C.O.G tilt: 0 to 30°

(6) Not Available With QZT130012 Powered Negative C.O.G tilt: -5 to 25°

(7) Not With QZT110036 Remote Joystick, VR2. In Case Of R-Net: QZT110032 Actuator Control & Lights Module, R-Net, ISM-6L Required

(8) Not With QZT110036 Remote Joystick, VR2. In Case Of QZT110004 Power Module, R-Net: QZT110032 Actuator Control & Lights Module, R-Net, ISM-6L Required

B - JAY Shape Back		£
JAY080001	JAY Shape Back (1)	270
JAY080002	JAY Shape Back, Oversized (2) (3)	270
B - JAY Shape Backrest Height		£
BH435	435 mm	0
BH46	460 mm	0
BH485	485 mm	0
B - JAY Shape Back		£
JAY080011	JAY Shape Lateral Thoracic Pad, (LxH) 100 x 120 mm, Pair	270
C - SEDEO Lite Backrest		£
QZT030214	SEDEO Lite Deep Contour Active (4) (5)	340
C - SEDEO Lite Backrest Cushion Cover		£
QZT030059	Back Cushion Cover, Incontinence Protection	0
QZT030108	Back Cushion Cover, Comfort	0
D - JAY J3 Back Size		£
JAY030111	JAY J3 Back Size, 410 mm	0
JAY030112	JAY J3 Back Size, 460 mm	0
JAY030113	JAY J3 Back Size, 510 mm	0
D - JAY J3 Back Size, Shallow Contour		£
JAY030034	JAY J3 Back, Shallow Contour, Mid Thoracic, Short, 300 mm	705
D - JAY J3 Back Size, Mid Contour		£
JAY030035	JAY J3 Back, Mid Contour, Mid Thoracic, Short, 300 mm	705
D - JAY J3 Back Size, Mid Deep Contour		£
JAY030040	JAY J3 Back, Mid Deep Contour, Mid Thoracic, Short, 300 mm	870
JAY030044	JAY J3 Back, Mid Deep Contour, Mid Thoracic, Medium, 340 mm	870
JAY030042	JAY J3 Back, Mid Deep Contour, Upper Thoracic, Medium, 460 mm	870
Push Handles		£
QZT030212	Standard Push Handle	0
QZT030213	Straight Push Handle (6)	0
Headrest Receiver		£
QZT030120	Headrest Receiver, Backrest Frame Mount	0
QZT030119	Headrest Receiver, Back Cushion Mount (7)	0
Headrest Pad		£
QZT030430	SEDEO, Headrest Pad, Small, (LxH) 240 x 150 mm (8)	95
QZT030431	SEDEO, Headrest Pad, Small, With Cover, (LxH) 240 x 150 mm (8)	110
QZT030432	SEDEO, Headrest Pad, Flexible, (LxH) 400 x 110 mm (8)	170
WHT030402	Whitmyer, Headrest Pad, Plush, (LxH) 254 x 127 mm (9)	170
WHT030404	Whitmyer, Headrest Pad, Adjust-A-Plush, Small, (LxH) 355 x 76 mm (9)	280

(1) Not Available With SW 30, 32 or 34

(2) Not Available With SW 30 or 32

(3) Supplied 25 mm Wider Than Seat Width

(4) QZT030214 SEDEO LITE Deep Contour Active Backrest Is Required For SD 36 (360 mm) / 38 (380mm)

(5) Not Available With SD 48 (480 mm) / SD 50 (500 mm)

(6) Not Available With QZT030120 Headrest Receiver, Backrest Frame Mount , QZT110021 Dual Control Or QZT110020 Joystick Mounted As Dual Control

(7) Only With QZT030214 SEDEO LITE Deep Contour Active

(8) Only With QZT030433 SEDEO HEADREST MOUNT Or QZT030434 SEDEO, Quick Release Headrest Mount

(9) Only With WHT030409 Whitmyer Headrest Mount LINX2, WHT030408 AXYS, WHT030410 AXYS , Offset Or WHT030411 COBRA XTRA Flip Back Headrest Mounts

Headrest Stem		£
QZT030433	SEDEO, Headrest Mount	140
QZT030434	SEDEO, Quick Release Headrest Mount	155
WHT030408	Whitmyer, Headrest Mount, LINX ²	190
WHT030409	Whitmyer, Headrest Mount, AXYS	155
WHT030411	Whitmyer, Headrest Mount, COBRA XTRA Flip Back	220

Armrest Types		£
QZT040122	Flip-up, height and angle adjustable	0

Side Guards		£
QZT040033	Side Guard	0

Arm Pads		£
QZT040040	Arm Pad, Integral Foam, 380 mm, Right	0
QZT040041	Arm Pad, Integral Foam, 380 mm, Left	0
QZT040204	Arm Pad, Comfort, Padded, PU Coated, 400 mm, Right (1)	75
QZT040203	Arm Pad, Comfort, Padded, PU Coated, 400 mm, Left (1)	75

Centre Mount Legrest		£
QZT050106	Centre Mount Footrest, Short (includes calf pads and flip up footplate)	0
QZT050107	Centre Mount Footrest, Medium (includes calf pads and flip up footplate)	0

Swing Away Legrest & Footplates		£
QZT050002	Hanger Angle 70°	0
QZT050001	Hanger Angle 80° (2)	0
QZT050115	Legrest Uni 80° Swing Away	0
QZT050016	Legrest Manual Elevating Swing Away (Includes Flip Up Footplates)	375
QZT050017	Powered Elevating Legrest	695
QZT050018	Powered Articulating Legrest	695
QZT050146	Uni Amputee Support, Right	150
QZT050147	Uni Amputee Support, Left	150

Footplates for Swing Away Legrests		£
QZT050135	Footplate, Fixed, Pair (3)	0
QZT050137	Footplate, Angle Adjustable, Pair (3)	80
QZT050050	Footplate, Divided, Aluminium, Angle-Adjustable, Flip-Up (Sideways), Heel Loop, Black (2) (4)	0
QZT050167	Footplate, High Mount - Recommended for short LLL (2) (4)	130
QZT050168	Short Clamp (90mm)	0
QZT050169	Long Clamp (121mm)	0

VR2 Controls		£
QZT110036	Remote Joystick, VR2	0
QZT110037	Remote Joystick, VR2, 2 Actuators	0
QZT110040	Remote Joystick, VR2, 2 Actuators And Lights	0

VR2 Power Module & Lighting Module		£
QZT110001	Power Module, VR2, 70 A (5)	0
QZT110002	Power Module, VR2, 90 A (6)	135
QZT110030	Lighting Module, VR2 (7)	0

(1) Not With QZT110056 Joystick Mounting, Parallel, Swing Away, Capsulated

(2) Not With QZT130012 Powered Negative C.O.G Tilt -5 to 25°

(3) Only With QZT050115 Legrest Uni 80° Swingaway

(4) Only With QZT050002/1 Hanger Angle 70°/80°

(5) Only With 6 kph

(6) Highly Recommended With QZT180009 4-Pole Motor, 6 kph / 4 mph

(7) If LED Light And Indicator Is Chosen, Then This Is Required

R-Net Controls		£
QZT110015	Remote Joystick, R-Net, LED, Actuators	485
QZT110016	Remote Joystick, R-Net, LED, Actuators And Lights	485
QZT110017	Remote Joystick, R-Net, Colour LCD	600
QZT110018	Remote Joystick, R-Net, Colour LCD, Heavy Duty (1)	1200
QZT110013	Remote Joystick, R-Net, High Resolution Colour LCD, Advanced, Infrared Control Included	770
QZT110023	Remote Joystick, R-Net, High Resolution Colour LCD, Advanced, Infrared And Bluetooth Control Included	925
R-Net Power Module & ISM		
QZT110003	Power Module, R-Net, 90 A	0
QZT110004	Power Module, R-Net, 120 A	135
QZT110032	Actuator Control & Lights Module, R-Net, ISM-6L	0
R-Net Gyro		
QZT110009	Traction Control System For R-Net (GYRO Technology)	400
Joystick Mount		£
QZT110050	Joystick Mounting, Fixed	0
QZT110082	Joystick Mounting, Parallel, Swing Away	0
QZT110056	Joystick Mounting, Parallel, Swing Away, Capsulated (2) (3)	80
Joystick Mounting Location		£
QZT110052	Joystick Mounting Location, Right	0
QZT110053	Joystick Mounting Location, Left	0
Attendant Controls		£
QZT110021	Dual Control	425
QZT110020	Joystick Mounted As Attendant Control (4) (5)	270
Joystick Knobs		£
QZT090505	Joystick Knob, Golf Ball, Ø 42 mm	40
QZT090506	Joystick Knob, T-Bar, 82 mm Wide	40
QZT090507	Joystick Knob, Soft Ball, Ø 70 mm	40
QZT090508	Joystick Knob, Ball, Ø 35 mm	40
QZT090045	Joystick Knob, Allround, Ball, Ø 48 mm	40
QZT090509	Joystick Knob, Chin Cup, Ø 37 mm	40
QZT090512	Joystick Knob, Stick, 80 x 15 mm	40
QZT090511	Joystick Knob, Mushroom, Ø 45 mm	40
LED Lights & Indicators		£
QZT110201	LED Light And Indicator StVZO Approved (6)	415
Remote Joystick – LinX		£
QZT110810	REM110, Drive Only	0
QZT110811	REM211, Drive & Actuators	105
QZT110812	REM211 6 Actuators	105
QZT110813	REM215 Actuators	475
QZT110814	REM216 6 Actuators	475
QZT110815	REM400, Drive 6 Act,	630
QZT110818	Omit Joystick	0
QZT110823	REM500 Omni	1225
QZT110824	Omit Omni	0

(1) Not With Any Joystick Knob QZT090505-QZT090511

(2) Not With QZT040062/3 Armpad, Integrl Foam 280x65mm Right/Left

(3) Only With QZT110015 Remote Joystick, R-Net, LED, Actuators and QZT110016 Remote Joystick, R-Net, LED, Actuators And Lights

(4) Choose Also A Remote Joystick

(5) Right Hand Attendant Control Only

(6) QZT110030 Lighting Module VR2, QZT110032 Actuator Control & Lights Module Or QZT110157 Lighting Module, R-Net, ISM-6L Required

(7) Must Also Select R-Net Controls

Power Modules & ISM's – LinX		£
QZT110802	Power Module, LinX, 75 A, Drive Only	0
QZT110803	Power Module, LinX, 75 A , Actuators and Lights	105
QZT110804	Power Module, LinX, 120 Ah, Drive Only	135
QZT110805	Power Module, LinX, 120 Ah , Actuators and Lights	135
Joystick Mounting - LiNX		£
QZT110836	Joystick Mounting, Parallel, Swing Away	0
QZT110837	Parallel Joystick	0
Joystick Mount Location - LiNX		£
QZT110838	Joystick Mounting Location, Right	0
QZT110839	Joystick Mounting Location, Left	0
Attendant Controls - LiNX		£
QZT110840	Dual Attendant Control, LiNX	445
QZT110842	Joystick Mounted As Attendant Control	270
QZT110843	Omit Attendant Control	0
Attendant Mounting Location		
QZT110844	Attendant Mounting Location, Right	0
QZT110845	Attendant Mounting Location, Left	0
QZK110850	Omni SA Right	130
QZK110851	Omni SA Left	130
Additional Modules- LiNX		£
QZT110830	Traction Control System, for LiNX Gyro Technology	420
QZT110831	Omit Gyro	0
QZT110820	2 Actuator Module LiNX, ACT-200	0
QZT110822	Omit Actuator Box	0
Motor Packages		£
QZT180012	2-Pole Motor, 6 kph/ 4 mph, Performance	0
QZT180015	2-Pole Motor, 10 kph/ 6.5 mph, Performance Package - Inc. LED Lights & Indicators, Rear View Mirror & Gyro (7)	500
QZT180009	4-Pole Motor, 6 kph / 4 mph	310
QZT180010	4-Pole Motor, 8 kph / 5 mph (7)	390
Drive Wheels & Castor Wheels		£
QZT070084	Drive Wheel, 12", Solid, Knobbly, Black	0
QZT070034	Drive Wheel, 14", Pneumatic, Knobbly, Black	0
QZT070033	Drive Wheel, 14", Solid, Knobbly, Black	0
QZT080213	Castor Wheel, 7", Solid, Black	0
Shroud Colours		£
QZT100576	Red	0
QZT100578	Blue	0
QZT100579	White	0
QZT100577	Black	0
Accent Colours		£
QZT140005	Apple Green (RAL 110 70 77)	0
QZT140004	Black (RAL 9005)	0
QZT140006	Orange (RAL 060 60 80)	0
QZT140007	Silver (RAL 9006)	0
QZT140002	Red (RAL 040 40 67)	0
QZT140003	Blue (RAL 260 40 45)	0
QZT140001	White (RAL 9010)	0

Personalised Shrouds		£
QZT140008	Grey Burst	250
QZT140009	Red Burst	250
QZT140010	Blue Burst	250
QZT140011	Pure White Burst	250
QZT140012	Flame Asteroid Grey	250
QZT140013	Flame Hot Red	250
QZT140014	Flame Sharp Blue	250
QZT140015	Flame Pure White	250
QZT140016	Floral White	250
QZT140017	Carbon Black	250

Batteries		£
QZT160006	Battery, 41 Ah, Gel, Maintenance-Free	0
QZT160013	Battery, 56 Ah, Gel, Maintenance-Free	130

Chargers		£
QZT160100	Charger, Automatic, 220 V / 8 A, UK	0
QZT160103	Charger, Automatic, 220 V / 10 A, UK	240

Accessories		£
QZT090100	Transportation Tie Down Points (Included as Standard)	0
QZT090171	Adjustable Lap Strap	0
QZT090040	Swing-Away Tray Table	335
QZT160014	24V Auxiliary Battery Supply (1)	55
QZT090110	Rear View Mirror, Right (2)	60
QZT090118	Rear View Mirror, Left (2)	60

Special Controls & Switches

Omni2 Input Control Module		£
QZT110740	OMNI2 Module R-Net INCL. 2x Single Switch (Ø 64mm) and Flexi Mount	1170

Omni2 Module Mount		£
QZT110122	OMNI2 Module, Flexi Mount, Right	0
QZT110121	OMNI2 Module, Flexi Mount, Left	0

Safety Devices		£
QZT090147	Remote Stop Switch (30 m Activation Range, Fit Via OBC Port) (3)	980

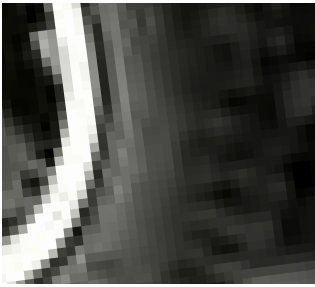
(1) Only With QZT160006 Battery, 41 Ah, Maintenance-Free

(2) Not In Combination With Same Entry Side QZT090040 Tray Table

(3) Not With VR2

Drive Wheels & Castor Wheels & Mudguards

◀ BACK



// QZT070069



// QZT080213

LED Lights & Chargers

◀ BACK



// QZT110201



// QZT160100 & QZT160101



// QZT160102



// QZT160103 & QZT160104

Back Cushion Type

◀ BACK



// QZT030214

Headrest Pads & Headrest Mounts

◀ BACK



// QZT030430 & QZT030431



// WHT030404-WHT030406



// QZT030433



// WHT030408



// WHT030409

Seat Cushion Type

◀ **BACK**



// QZT020120

Armrest Type

◀ **BACK**



// QZT040039

Swing Away Legrest & Support Options

◀ **BACK**



// QZT050001
// QZT050050
// QZT050167

Remote Joystick – R-Net & Joystick Mounting

◀ BACK



// QZT110017



// QZT110013



// QZT110018



// QZT110056

Remote Joystick – VR2

◀ BACK



// QZT110036



// QZT110037

Joystick Knobs

◀ BACK



// QZT090505



// QZT090045



// QZT090507



// QZT090508



// QZT090509



// QZT090512



// QZT090511



// QZT090506

Electronic Programmers – VR2

◀ BACK



// QZT090063

Electronic Programmers – R-Net

◀ BACK



// QZT090066



// QZT090064

Power Modules – R-Net / Attendant Controls

◀ BACK



// QZT110004



// QZT110021

4-Actuator Control Box

◀ BACK



// QZT110055

R-Net OMNI2 Input Control Modules

◀ BACK



// QZT110172

B4M Wrapped Shrouds

◀ BACK



// QZT140008
// QZT140009
// QZT140010
// QZT140011



// QZT140012
// QZT140013
// QZT140014
// QZT140015



// QZT140016
// QZT140017



// QZT140018
// QZT140019

Comments For Adaptation



Q300 M Mini Teens

£

Base Price	6,250.00
Total Of Additional Equipment	
Packaging And Transport	
Exclusive VAT	
VAT	
Total Price	

Date

Signature

Day Month Year

**Sunrise Medical**

Thorns Road, Brierley Hill, West Midland
DY5 2LD

Phone: +44 (0) 845 605 66 88

Fax: +44 (0) 845 605 66 89

E-Mail: enquiries@sunmed.co.ukwww.SunriseMedical.co.uk